

## REPUBLIC OF CROATIA

Phone: +385 1 6259 373  
+385 1 6259 372  
+385 1 6259 381  
AFS: LDZAYOYX  
Email: aip@crocontrol.hr  
URL: https://www.crocontrol.hr



AIRAC AIP AMDT 003/2025  
Effective Date: 17 APR 2025  
Publication Date: 06 MAR 2025

---

**1. Amendment contents:****GEN**

- **GEN 0.2** - Record of AIP amendments - updated
- **GEN 0.3** - Record of AIP supplements - updated
- **GEN 0.4** - Checklist of AIP pages - updated
- **GEN 0.5** - List of hand amendments to the AIP - updated
- **GEN 0.6** - Table of contents to Part 1 - updated
- **GEN 4.1** - Aerodrome/Heliport Charges - LDLO, LDPL, LDRI, LDSP, LDZA and LDZD - various changes

**ENR**

- **ENR 5.4** - Air navigation obstacles - updated

**AD**

- **LDPL AD 2.6** - Rescue and fire fighting services - Remarks for CAT 6 - editorial changes
- **LDRI AD 2.3, 2.17 and 2.22** - ATS - various changes
- **LDZA AD 2** - New Chart:
  - Aircraft Parking/Docking Chart - ICAO (LDZA AD 2.24.2 APDC WEST -1/2)

**2. Hand corrections to the following pages:**

- See GEN 0.5

**3. Record entry of AMDT in GEN 0.2****4. This AIP amendment incorporates information contained in the following publications:**

**NOTAM:** A2829/24, A0107/25 and A0169/25  
NOTAMs incorporated in this AMDT will be cancelled by NOTAMC

**SUP:** NIL

**AIC:** NIL

**5. Insert / remove the pages as shown in list on the next page:**

**Insert the following pages**

GEN 0.2 - 5/6  
GEN 0.3 - 1/2  
GEN 0.4 - 1/2  
GEN 0.4 - 3/4  
GEN 0.4 - 5/6  
GEN 0.4 - 7/8  
GEN 0.4 - 9/10  
GEN 0.5 - 3/4  
GEN 0.6 - 1/2  
GEN 0.6 - 3/4  
GEN 4.1 - 1/2  
GEN 4.1 - 3/4  
GEN 4.1 - 5/6  
GEN 4.1 - 7/8  
GEN 4.1 - 9/10  
GEN 4.1 - 11/12  
GEN 4.1 - 13/14  
GEN 4.1 - 15/16  
GEN 4.1 - 17/18  
GEN 4.1 - 19/20  
GEN 4.1 - 21/22  
GEN 4.1 - 23/24  
GEN 4.1 - 25/26  
GEN 4.1 - 27/28  
GEN 4.1 - 29/30  
GEN 4.1 - 31/32  
GEN 4.1 - 33/34  
GEN 4.1 - 35/36  
GEN 4.1 - 37/38  
GEN 4.1 - 39/40  
ENR 5.4 - 5/6  
LDPL AD 2 - 3/4  
LDRI AD 2 - 1/2  
LDRI AD 2 - 7/8  
LDRI AD 2 - 9/10  
LDZAAD 2.24.2 APDC WEST - 1/2

17 APR 2025 / 23 JAN 2025  
17 APR 2025 / 01 FEB 2018  
17 APR 2025 / 17 APR 2025  
17 APR 2025 / 17 APR 2025  
17 APR 2025 / 17 APR 2025  
17 APR 2025 / 17 APR 2025  
17 APR 2025 / 17 APR 2025  
17 APR 2025 / 23 JAN 2025  
17 APR 2025 / 17 APR 2025  
17 APR 2025 / 17 APR 2025  
17 APR 2025 / 17 APR 2025  
16 MAY 2024 / 17 APR 2025  
17 APR 2025 / 17 APR 2025  
17 APR 2025 / 17 APR 2025  
17 APR 2025 / 17 APR 2025  
17 APR 2025 / 17 APR 2025  
17 APR 2025 / 17 APR 2025  
17 APR 2025 / 17 APR 2025  
17 APR 2025 / 17 APR 2025  
17 APR 2025 / 17 APR 2025  
17 APR 2025 / 17 APR 2025  
17 APR 2025 / 17 APR 2025  
17 APR 2025 / 17 APR 2025  
17 APR 2025 / 17 APR 2025  
17 APR 2025 / 17 APR 2025  
17 APR 2025 / 17 APR 2025  
17 APR 2025 / 17 APR 2025  
17 APR 2025 / 17 APR 2025  
17 APR 2025 / 17 APR 2025  
17 APR 2025 / 17 APR 2025  
17 APR 2025 / 17 APR 2025  
17 APR 2025 / 17 APR 2025  
17 APR 2025 / 17 APR 2025  
17 APR 2025 / 17 APR 2025  
17 APR 2025 / 17 APR 2025  
17 APR 2025 / 17 APR 2025  
17 APR 2025 / 17 APR 2025  
13 JUN 2024 / 17 APR 2025  
17 APR 2025 / 17 APR 2025  
08 AUG 2024 / 17 APR 2025  
08 AUG 2024 / 17 APR 2025  
17 APR 2025 / 17 APR 2025

**Remove the following pages**

GEN 0.2 - 5/6  
GEN 0.3 - 1/2  
GEN 0.4 - 1/2  
GEN 0.4 - 3/4  
GEN 0.4 - 5/6  
GEN 0.4 - 7/8  
GEN 0.4 - 9/10  
GEN 0.5 - 3/4  
GEN 0.6 - 1/2  
GEN 0.6 - 3/4  
GEN 4.1 - 1/2  
GEN 4.1 - 3/4  
GEN 4.1 - 5/6  
GEN 4.1 - 7/8  
GEN 4.1 - 9/10  
GEN 4.1 - 11/12  
GEN 4.1 - 13/14  
GEN 4.1 - 15/16  
GEN 4.1 - 17/18  
GEN 4.1 - 19/20  
GEN 4.1 - 21/22  
GEN 4.1 - 23/24  
GEN 4.1 - 25/26  
GEN 4.1 - 27/28  
GEN 4.1 - 29/30  
GEN 4.1 - 31/32  
GEN 4.1 - 33/34  
GEN 4.1 - 35/36  
GEN 4.1 - 37/38  
NIL  
ENR 5.4 - 5/6  
LDPL AD 2 - 3/4  
LDRI AD 2 - 1/2  
LDRI AD 2 - 7/8  
LDRI AD 2 - 9/10  
LDZAAD 2.24.2 APDC WEST - 1/2

20 MAR 2025 / 23 JAN 2025  
20 MAR 2025 / 01 FEB 2018  
20 MAR 2025 / 20 MAR 2025  
20 MAR 2025 / 20 MAR 2025  
20 MAR 2025 / 20 MAR 2025  
20 MAR 2025 / 20 MAR 2025  
20 MAR 2025 / 20 MAR 2025  
20 MAR 2025 / 23 JAN 2025  
20 MAR 2025 / 20 MAR 2025  
20 MAR 2025 / 20 MAR 2025  
16 MAY 2024 / 16 MAY 2024  
08 AUG 2024 / 10 OCT 2019  
13 JUN 2024 / 13 JUN 2024  
07 SEP 2023 / 07 SEP 2023  
07 SEP 2023 / 08 AUG 2024  
07 SEP 2023 / 16 MAY 2024  
20 FEB 2025 / 20 FEB 2025  
20 FEB 2025 / 20 FEB 2025  
20 FEB 2025 / 20 FEB 2025  
20 FEB 2025 / 20 FEB 2025  
20 FEB 2025 / 20 FEB 2025  
20 FEB 2025 / 20 FEB 2025  
20 FEB 2025 / 20 FEB 2025  
20 FEB 2025 / 20 FEB 2025  
20 FEB 2025 / 20 FEB 2025  
20 FEB 2025 / 20 FEB 2025  
20 FEB 2025 / 20 FEB 2025  
20 FEB 2025 / 20 FEB 2025  
20 FEB 2025 / 20 FEB 2025  
20 FEB 2025 / 20 FEB 2025  
20 FEB 2025 / 20 FEB 2025  
20 FEB 2025 / 20 FEB 2025  
23 JAN 2025 / 23 JAN 2025  
13 JUN 2024 / 20 MAR 2025  
11 JUL 2024 / 11 JUL 2024  
08 AUG 2024 / 08 AUG 2024  
08 AUG 2024 / 08 AUG 2024  
20 FEB 2025 / 20 FEB 2025

<b>AIRAC AIP AMENDMENT</b>			
<i>NR/Year</i>	<i>Publication date</i>	<i>Effective date</i>	<i>Inserted by</i>
013/2024	12 DEC 2024	23 JAN 2025	
001/2025	09 JAN 2025	20 FEB 2025	
002/2025	06 FEB 2025	20 MAR 2025	
003/2025	06 MAR 2025	17 APR 2025	

<b>AIP AMENDMENT</b>			
<i>NR/Year</i>	<i>Publication date</i>	<i>Date inserted</i>	<i>Inserted by</i>
002/2012	13-Apr-2012	13-Apr-2012	
001/2014	22-Aug-2014	22-Aug-2014	
001/2015	01-Feb-2015	01-Feb-2015	
002/2015	01-Jun-2015	01-Jun-2015	
003/2015	11-Jun-2015	23-Jul-2015	
004/2015	26-Oct-2015	26-Oct-2015	
001/2016	22-Jan-2016	22-Jan-2016	
002/2016	15-Mar-2016	15-Mar-2016	
003/2016	02-Aug-2016	02-Aug-2016	
001/2017	06-Jan-2017	06-Jan-2017	
002/2017	06-Jul-2017	21-Jul-2017	
001/2019	02-Jul-2019	19-Jul-2019	
002/2019	20-Nov-2019	06-Dec-2019	
001/2020	31-Aug-2020	14-Sep-2020	

---

**GEN 0.3 RECORD OF AIP SUPPLEMENTS**

---

NR/Year	Subject	AIP Section(s) Affected	Period of Validity	Cancellation Record
014/2023	LDZA - ZAGREB/Franjo Tudjman Airport - Construction works at military area	LDZA AD 2	16-Nov-2023 - UFN	
004/2025	Ad hoc established flexible Danger Areas - Zagreb FIR lower airspace	ENR 1.9.2, ENR 5.1	06-Feb-2025 - UFN	
005/2025	LDZD - ZADAR/Zemunik Airport - Apron current status and works on the expansion of Main passenger terminal building	LDZD AD 2	06-Feb-2025 - UFN	
006/2025	Ad hoc established flexible Temporary Reserved Areas and Temporary Segregated Areas (for State users only) - Zagreb FIR lower airspace	ENR 1.9.2, ENR 5.2	06-Mar-2025 - UFN	

THIS PAGE INTENTIONALLY LEFT BLANK

Page	Date	Page	Date
<b>GEN 0.4 CHECKLIST OF AIP PAGES</b>			
<b>PART 1 - GENERAL (GEN)</b>			
GEN 0.1 - 1	23 MAR 2023	GEN 1.5 - 3	30 DEC 2021
GEN 0.1 - 2	23 MAR 2023	GEN 1.5 - 4	30 APR 2015
GEN 0.1 - 3	23 MAR 2023	GEN 1.6 - 1	15 JUL 2021
GEN 0.1 - 4	20 FEB 2025	GEN 1.6 - 2	15 JUL 2021
GEN 0.2 - 1	20 JUL 2017	GEN 1.7 - 1	12 OCT 2017
GEN 0.2 - 2	11 OCT 2018	GEN 1.7 - 2	12 AUG 2021
GEN 0.2 - 3	30 DEC 2021	GEN 1.7 - 3	20 APR 2023
GEN 0.2 - 4	26 DEC 2024	GEN 1.7 - 4	12 AUG 2021
GEN 0.2 - 5	17 APR 2025	GEN 1.7 - 5	12 AUG 2021
GEN 0.2 - 6	23 JAN 2025	GEN 1.7 - 6	12 AUG 2021
GEN 0.3 - 1	17 APR 2025	GEN 1.7 - 7	12 AUG 2021
GEN 0.3 - 2	01 FEB 2018	GEN 1.7 - 8	12 AUG 2021
GEN 0.4 - 1	17 APR 2025	GEN 1.7 - 9	12 AUG 2021
GEN 0.4 - 2	17 APR 2025	GEN 1.7 - 10	12 AUG 2021
GEN 0.4 - 3	17 APR 2025	GEN 1.7 - 11	12 AUG 2021
GEN 0.4 - 4	17 APR 2025	GEN 1.7 - 12	12 AUG 2021
GEN 0.4 - 5	17 APR 2025	GEN 1.7 - 13	12 AUG 2021
GEN 0.4 - 6	17 APR 2025	GEN 1.7 - 14	07 OCT 2021
GEN 0.4 - 7	17 APR 2025	GEN 1.7 - 15	07 OCT 2021
GEN 0.4 - 8	17 APR 2025	GEN 1.7 - 16	29 DEC 2022
GEN 0.4 - 9	17 APR 2025	GEN 1.7 - 17	29 DEC 2022
GEN 0.4 - 10	17 APR 2025	GEN 1.7 - 18	29 DEC 2022
GEN 0.5 - 1	28 NOV 2024	GEN 1.7 - 19	20 MAR 2025
GEN 0.5 - 2	20 MAR 2025	GEN 1.7 - 20	08 AUG 2024
GEN 0.5 - 3	17 APR 2025	GEN 1.7 - 21	18 MAY 2023
GEN 0.5 - 4	23 JAN 2025	GEN 1.7 - 22	29 DEC 2022
GEN 0.6 - 1	17 APR 2025	GEN 2.1 - 1	23 MAR 2023
GEN 0.6 - 2	17 APR 2025	GEN 2.1 - 2	08 SEP 2022
GEN 0.6 - 3	17 APR 2025	GEN 2.1 - 3	08 SEP 2022
GEN 0.6 - 4	17 APR 2025	GEN 2.1 - 4	23 MAR 2023
GEN 1.1 - 1	15 JUL 2021	GEN 2.2 - 1	28 NOV 2024
GEN 1.1 - 2	11 JUL 2024	GEN 2.2 - 2	28 NOV 2024
GEN 1.1 - 3	15 JUL 2021	GEN 2.2 - 3	28 NOV 2024
GEN 1.1 - 4	26 JAN 2023	GEN 2.2 - 4	28 NOV 2024
GEN 1.1 - 5	26 JAN 2023	GEN 2.2 - 5	28 NOV 2024
GEN 1.1 - 6	26 JAN 2023	GEN 2.2 - 6	28 NOV 2024
GEN 1.2 - 1	11 JUL 2024	GEN 2.2 - 7	28 NOV 2024
GEN 1.2 - 2	11 JUL 2024	GEN 2.2 - 8	28 NOV 2024
GEN 1.2 - 3	18 MAY 2023	GEN 2.2 - 9	28 NOV 2024
GEN 1.2 - 4	18 MAY 2023	GEN 2.2 - 10	28 NOV 2024
GEN 1.2 - 5	11 JUL 2024	GEN 2.2 - 11	28 NOV 2024
GEN 1.2 - 6	11 JUL 2024	GEN 2.2 - 12	28 NOV 2024
GEN 1.2 - 7	11 JUL 2024	GEN 2.3 - 1	01 FEB 2018
GEN 1.2 - 8	11 JUL 2024	GEN 2.3 - 2	01 FEB 2018
GEN 1.2 - 9	11 JUL 2024	GEN 2.3 - 3	01 FEB 2018
GEN 1.2 - 10	11 JUL 2024	GEN 2.3 - 4	01 FEB 2018
GEN 1.2 - 11	11 JUL 2024	GEN 2.3 - 5	01 FEB 2018
GEN 1.2 - 12	11 JUL 2024	GEN 2.3 - 6	01 FEB 2018
GEN 1.3 - 1	12 DEC 2013	GEN 2.3 - 7	01 FEB 2018
GEN 1.3 - 2	12 DEC 2013	GEN 2.3 - 8	01 FEB 2018
GEN 1.3 - 3	18 MAY 2023	GEN 2.3 - 9	04 NOV 2021
GEN 1.3 - 4	18 MAY 2023	GEN 2.3 - 10	01 FEB 2018
GEN 1.3 - 5	18 MAY 2023	GEN 2.3 - 11	01 FEB 2018
GEN 1.3 - 6	18 MAY 2023	GEN 2.3 - 12	01 FEB 2018
GEN 1.3 - 7	18 MAY 2023	GEN 2.3 - 13	01 FEB 2018
GEN 1.3 - 8	18 MAY 2023	GEN 2.3 - 14	01 FEB 2018
GEN 1.3 - 9	18 MAY 2023	GEN 2.4 - 1	31 OCT 2024
GEN 1.3 - 10	18 MAY 2023	GEN 2.4 - 2	31 OCT 2024
GEN 1.4 - 1	23 MAR 2023	GEN 2.5 - 1	08 AUG 2024
GEN 1.4 - 2	23 MAR 2023	GEN 2.5 - 2	08 AUG 2024
GEN 1.5 - 1	15 JUL 2021	GEN 2.6 - 1	13 SEP 2018
GEN 1.5 - 2	15 JUL 2021	GEN 2.6 - 2	08 MAR 2012
		GEN 2.6 - 3	08 MAR 2012
		GEN 2.6 - 4	08 MAR 2012
		GEN 2.7 - 1	23 FEB 2023
		GEN 2.7 - 2	23 FEB 2023
		GEN 2.7 - 3	23 FEB 2023
		GEN 2.7 - 4	23 FEB 2023
		GEN 2.7 - 5	23 FEB 2023
		GEN 2.7 - 6	23 FEB 2023
		GEN 2.7 - 7	23 FEB 2023

Page	Date	Page	Date
GEN 2.7 - 8	23 FEB 2023	GEN 4.1 - 27	17 APR 2025
GEN 2.7 - 9	23 FEB 2023	GEN 4.1 - 28	17 APR 2025
GEN 2.7 - 10	23 FEB 2023	GEN 4.1 - 29	17 APR 2025
GEN 2.7 - 11	23 FEB 2023	GEN 4.1 - 30	17 APR 2025
GEN 2.7 - 12	23 FEB 2023	GEN 4.1 - 31	17 APR 2025
GEN 2.7 - 13	23 FEB 2023	GEN 4.1 - 32	17 APR 2025
GEN 2.7 - 14	23 FEB 2023	GEN 4.1 - 33	17 APR 2025
GEN 3.1 - 1	20 FEB 2025	GEN 4.1 - 34	17 APR 2025
GEN 3.1 - 2	20 FEB 2025	GEN 4.1 - 35	17 APR 2025
GEN 3.1 - 3	28 NOV 2024	GEN 4.1 - 36	17 APR 2025
GEN 3.1 - 4	28 NOV 2024	GEN 4.1 - 37	17 APR 2025
GEN 3.1 - 5	28 NOV 2024	GEN 4.1 - 38	17 APR 2025
GEN 3.1 - 6	28 NOV 2024	GEN 4.1 - 39	17 APR 2025
GEN 3.2 - 1	20 FEB 2025	GEN 4.1 - 40	17 APR 2025
GEN 3.2 - 2	23 JAN 2025	GEN 4.2 - 1	16 JUN 2022
GEN 3.2 - 3	11 JUL 2024	GEN 4.2 - 2	16 JUN 2022
GEN 3.2 - 4	11 JUL 2024	GEN 4.2 - 3	23 MAR 2023
GEN 3.3 - 1	13 JUN 2024	GEN 4.2 - 4	16 JUN 2022
GEN 3.3 - 2	13 JUN 2024		
GEN 3.3 - 3	13 JUN 2024		
GEN 3.3 - 4	20 FEB 2025		
GEN 3.4 - 1	20 FEB 2025		
GEN 3.4 - 2	25 JAN 2024	ENR 0.1 - 1	08 MAR 2012
GEN 3.4 - 3	13 JUN 2024	ENR 0.1 - 2	08 MAR 2012
GEN 3.4 - 4	13 JUN 2024	ENR 0.2 - 1	08 MAR 2012
GEN 3.4 - 5	13 JUN 2024	ENR 0.2 - 2	08 MAR 2012
GEN 3.4 - 6	13 JUN 2024	ENR 0.3 - 1	08 MAR 2012
GEN 3.4 - 7	13 JUN 2024	ENR 0.3 - 2	08 MAR 2012
GEN 3.4 - 8	13 JUN 2024	ENR 0.4 - 1	08 MAR 2012
GEN 3.4 - 9	13 JUN 2024	ENR 0.4 - 2	08 MAR 2012
GEN 3.4 - 10	13 JUN 2024	ENR 0.5 - 1	08 MAR 2012
GEN 3.5 - 1	31 OCT 2024	ENR 0.5 - 2	08 MAR 2012
GEN 3.5 - 2	18 APR 2024	ENR 0.6 - 1	20 MAR 2025
GEN 3.5 - 3	26 DEC 2024	ENR 0.6 - 2	20 MAR 2025
GEN 3.5 - 4	26 DEC 2024	ENR 0.6 - 3	20 MAR 2025
GEN 3.5 - 5	08 AUG 2024	ENR 0.6 - 4	20 MAR 2025
GEN 3.5 - 6	08 AUG 2024	ENR 1.1 - 1	22 APR 2021
GEN 3.5 - 7	18 APR 2024	ENR 1.1 - 2	22 APR 2021
GEN 3.5 - 8	18 APR 2024	ENR 1.1 - 3	22 APR 2021
GEN 3.5 - 9	18 APR 2024	ENR 1.1 - 4	22 APR 2021
GEN 3.5 - 10	18 APR 2024	ENR 1.1 - 5	22 APR 2021
GEN 3.6 - 1	27 JAN 2022	ENR 1.1 - 6	22 APR 2021
GEN 3.6 - 2	24 MAR 2022	ENR 1.1 - 7	15 JUN 2023
GEN 3.6 - 3	24 MAR 2022	ENR 1.1 - 8	15 JUN 2023
GEN 3.6 - 4	24 MAR 2022	ENR 1.2 - 1	26 OCT 2015
GEN 4.1 - 1	16 MAY 2024	ENR 1.2 - 2	26 OCT 2015
GEN 4.1 - 2	17 APR 2025	ENR 1.2 - 3	26 OCT 2015
GEN 4.1 - 3	17 APR 2025	ENR 1.2 - 4	08 MAR 2012
GEN 4.1 - 4	17 APR 2025	ENR 1.3 - 1	19 JUL 2019
GEN 4.1 - 5	17 APR 2025	ENR 1.3 - 2	19 JUL 2019
GEN 4.1 - 6	17 APR 2025	ENR 1.3 - 3	07 SEP 2023
GEN 4.1 - 7	17 APR 2025	ENR 1.3 - 4	01 FEB 2018
GEN 4.1 - 8	17 APR 2025	ENR 1.4 - 1	10 SEP 2020
GEN 4.1 - 9	17 APR 2025	ENR 1.4 - 2	13 SEP 2018
GEN 4.1 - 10	17 APR 2025	ENR 1.5 - 1	21 APR 2022
GEN 4.1 - 11	17 APR 2025	ENR 1.5 - 2	27 FEB 2020
GEN 4.1 - 12	17 APR 2025	ENR 1.6 - 1	20 FEB 2025
GEN 4.1 - 13	17 APR 2025	ENR 1.6 - 2	20 FEB 2025
GEN 4.1 - 14	17 APR 2025	ENR 1.6 - 3	20 FEB 2025
GEN 4.1 - 15	17 APR 2025	ENR 1.6 - 4	20 FEB 2025
GEN 4.1 - 16	17 APR 2025	ENR 1.7 - 1	25 APR 2019
GEN 4.1 - 17	17 APR 2025	ENR 1.7 - 2	16 MAY 2024
GEN 4.1 - 18	17 APR 2025	ENR 1.7 - 3	16 MAY 2024
GEN 4.1 - 19	17 APR 2025	ENR 1.7 - 4	08 MAR 2012
GEN 4.1 - 20	17 APR 2025	ENR 1.8 - 1	13 JUL 2023
GEN 4.1 - 21	17 APR 2025	ENR 1.8 - 2	16 JUL 2020
GEN 4.1 - 22	17 APR 2025	ENR 1.8 - 3	16 JUL 2020
GEN 4.1 - 23	17 APR 2025	ENR 1.8 - 4	13 JUN 2024
GEN 4.1 - 24	17 APR 2025	ENR 1.8 - 5	13 SEP 2018
GEN 4.1 - 25	17 APR 2025	ENR 1.8 - 6	03 JAN 2019
GEN 4.1 - 26	17 APR 2025	ENR 1.8 - 7	03 JAN 2019

**PART 2 - EN-ROUTE (ENR)**



Page	Date	Page	Date
ENR 1.8 - 8	03 JAN 2019	ENR 1.14 - 3	23 FEB 2023
ENR 1.8 - 9	03 JAN 2019	ENR 1.14 - 4	23 FEB 2023
ENR 1.8 - 10	27 FEB 2020	ENR 1.14 - 5	23 FEB 2023
ENR 1.8 - 11	27 FEB 2020	ENR 1.14 - 6	23 FEB 2023
ENR 1.8 - 12	03 JAN 2019	ENR 2.1 - 1	28 DEC 2023
ENR 1.8 - 13	16 JUL 2020	ENR 2.1 - 2	18 APR 2024
ENR 1.8 - 14	03 JAN 2019	ENR 2.1 - 3	05 SEP 2024
ENR 1.8 - 15	03 JAN 2019	ENR 2.1 - 4	28 DEC 2023
ENR 1.8 - 16	03 JAN 2019	ENR 2.1 - 5	18 APR 2024
ENR 1.8 - 17	03 JAN 2019	ENR 2.1 - 6	28 DEC 2023
ENR 1.8 - 18	03 JAN 2019	ENR 2.1 - 7	18 APR 2024
ENR 1.8 - 19	03 JAN 2019	ENR 2.1 - 8	18 APR 2024
ENR 1.8 - 20	03 JAN 2019	ENR 2.2 - 1	26 JAN 2023
ENR 1.9 - 1	13 JUL 2023	ENR 2.2 - 2	26 JAN 2023
ENR 1.9 - 2	26 MAR 2020	ENR 2.2 - 3	18 APR 2024
ENR 1.9 - 3	10 SEP 2020	ENR 2.2 - 4	25 JAN 2024
ENR 1.9 - 4	10 SEP 2020	ENR 3.1 - 1	25 JAN 2024
ENR 1.9 - 5	10 SEP 2020	ENR 3.1 - 2	25 JAN 2024
ENR 1.9 - 6	10 SEP 2020	ENR 3.2 - 1	05 SEP 2024
ENR 1.9 - 7	10 SEP 2020	ENR 3.2 - 2	20 MAR 2025
ENR 1.9 - 8	15 JUL 2021	ENR 3.2 - 3	05 SEP 2024
ENR 1.9 - 9	28 MAY 2015	ENR 3.2 - 4	05 SEP 2024
ENR 1.9 - 10	28 MAY 2015	ENR 3.2 - 5	03 OCT 2024
ENR 1.9 - 11	28 MAY 2015	ENR 3.2 - 6	20 MAR 2025
ENR 1.9 - 12	28 MAY 2015	ENR 3.2 - 7	20 MAR 2025
ENR 1.9 - 13	10 SEP 2020	ENR 3.2 - 8	05 SEP 2024
ENR 1.9 - 14	10 SEP 2020	ENR 3.2 - 9	05 SEP 2024
ENR 1.9 - 15	10 SEP 2020	ENR 3.2 - 10	05 SEP 2024
ENR 1.9 - 16	22 JUN 2017	ENR 3.2 - 11	05 SEP 2024
ENR 1.9 - 17	15 JUL 2021	ENR 3.2 - 12	05 SEP 2024
ENR 1.9 - 18	15 JUL 2021	ENR 3.2 - 13	05 SEP 2024
ENR 1.9 - 19	28 DEC 2023	ENR 3.2 - 14	25 JAN 2024
ENR 1.9 - 20	16 MAY 2024	ENR 3.2 - 15	20 MAR 2025
ENR 1.9 - 21	16 MAY 2024	ENR 3.2 - 16	25 JAN 2024
ENR 1.9 - 22	28 DEC 2023	ENR 3.2 - 17	05 SEP 2024
ENR 1.9 - 23	28 DEC 2023	ENR 3.2 - 18	05 SEP 2024
ENR 1.9 - 24	16 MAY 2024	ENR 3.2 - 19	21 MAR 2024
ENR 1.9 - 25	16 MAY 2024	ENR 3.2 - 20	05 SEP 2024
ENR 1.9 - 26	28 DEC 2023	ENR 3.2 - 21	05 SEP 2024
ENR 1.10 - 1	16 JUL 2020	ENR 3.2 - 22	21 MAR 2024
ENR 1.10 - 2	15 JUL 2021	ENR 3.2 - 23	21 MAR 2024
ENR 1.10 - 3	26 MAR 2020	ENR 3.2 - 24	05 SEP 2024
ENR 1.10 - 4	24 FEB 2022	ENR 3.2 - 25	05 SEP 2024
ENR 1.10 - 5	24 FEB 2022	ENR 3.2 - 26	05 SEP 2024
ENR 1.10 - 6	24 FEB 2022	ENR 3.2 - 27	25 JAN 2024
ENR 1.10 - 7	24 FEB 2022	ENR 3.2 - 28	25 JAN 2024
ENR 1.10 - 8	24 FEB 2022	ENR 3.2 - 29	05 SEP 2024
ENR 1.10 - 9	24 FEB 2022	ENR 3.2 - 30	20 MAR 2025
ENR 1.10 - 10	24 FEB 2022	ENR 3.2 - 31	21 MAR 2024
ENR 1.10 - 11	24 FEB 2022	ENR 3.2 - 32	05 SEP 2024
ENR 1.10 - 12	24 FEB 2022	ENR 3.2 - 33	18 APR 2024
ENR 1.10 - 13	24 FEB 2022	ENR 3.2 - 34	05 SEP 2024
ENR 1.10 - 14	24 FEB 2022	ENR 3.2 - 35	25 JAN 2024
ENR 1.10 - 15	24 FEB 2022	ENR 3.2 - 36	05 SEP 2024
ENR 1.10 - 16	18 APR 2024	ENR 3.2 - 37	25 JAN 2024
ENR 1.10 - 17	18 APR 2024	ENR 3.2 - 38	18 APR 2024
ENR 1.10 - 18	18 APR 2024	ENR 3.2 - 39	21 MAR 2024
ENR 1.10 - 19	20 FEB 2025	ENR 3.2 - 40	20 MAR 2025
ENR 1.10 - 20	18 APR 2024	ENR 3.2 - 41	05 SEP 2024
ENR 1.10 - 21	18 APR 2024	ENR 3.2 - 42	25 JAN 2024
ENR 1.10 - 22	01 FEB 2018	ENR 3.3 - 1	25 JAN 2024
ENR 1.11 - 1	07 SEP 2023	ENR 3.3 - 2	25 JAN 2024
ENR 1.11 - 2	23 MAY 2019	ENR 3.4 - 1	25 JAN 2024
ENR 1.12 - 1	03 DEC 2020	ENR 3.4 - 2	08 MAR 2012
ENR 1.12 - 2	08 MAR 2012	ENR 4.1 - 1	20 MAR 2025
ENR 1.12 - 3	08 MAR 2012	ENR 4.1 - 2	22 FEB 2024
ENR 1.12 - 4	08 MAR 2012	ENR 4.2 - 1	08 MAR 2012
ENR 1.13 - 1	30 APR 2015	ENR 4.2 - 2	08 MAR 2012
ENR 1.13 - 2	30 APR 2015	ENR 4.3 - 1	30 MAR 2017
ENR 1.14 - 1	23 FEB 2023	ENR 4.3 - 2	08 MAR 2012
ENR 1.14 - 2	23 FEB 2023	ENR 4.4 - 1	20 MAR 2025

Page	Date	Page	Date
ENR 4.4 - 2	20 MAR 2025	ENR 5.2 - 41	20 MAR 2025
ENR 4.4 - 3	20 MAR 2025	ENR 5.2 - 42	20 MAR 2025
ENR 4.4 - 4	20 MAR 2025	ENR 5.2 - 43	20 MAR 2025
ENR 4.4 - 5	20 MAR 2025	ENR 5.2 - 44	20 MAR 2025
ENR 4.4 - 6	20 MAR 2025	ENR 5.2 - 45	20 MAR 2025
ENR 4.4 - 7	20 MAR 2025	ENR 5.2 - 46	20 MAR 2025
ENR 4.4 - 8	20 MAR 2025	ENR 5.2 - 47	20 MAR 2025
ENR 4.5 - 1	08 MAR 2012	ENR 5.2 - 48	20 MAR 2025
ENR 4.5 - 2	08 MAR 2012	ENR 5.2 - 49	20 MAR 2025
ENR 5.1 - 1	20 APR 2023	ENR 5.2 - 50	20 MAR 2025
ENR 5.1 - 2	11 JUL 2024	ENR 5.2 - 51	20 MAR 2025
ENR 5.1 - 3	11 JUL 2024	ENR 5.2 - 52	20 MAR 2025
ENR 5.1 - 4	11 JUL 2024	ENR 5.2 - 53	20 MAR 2025
ENR 5.1 - 5	11 JUL 2024	ENR 5.2 - 54	20 MAR 2025
ENR 5.1 - 6	11 JUL 2024	ENR 5.2 - 55	20 MAR 2025
ENR 5.1 - 7	11 JUL 2024	ENR 5.2 - 56	20 MAR 2025
ENR 5.1 - 8	11 JUL 2024	ENR 5.2 - 57	20 MAR 2025
ENR 5.1 - 9	11 JUL 2024	ENR 5.2 - 58	20 MAR 2025
ENR 5.1 - 10	11 JUL 2024	ENR 5.3 - 1	06 OCT 2022
ENR 5.1 - 11	11 JUL 2024	ENR 5.3 - 2	08 MAR 2012
ENR 5.1 - 12	11 JUL 2024	ENR 5.4 - 1	23 JAN 2025
ENR 5.1 - 13	11 JUL 2024	ENR 5.4 - 2	23 JAN 2025
ENR 5.1 - 14	11 JUL 2024	ENR 5.4 - 3	23 JAN 2025
ENR 5.1 - 15	11 JUL 2024	ENR 5.4 - 4	23 JAN 2025
ENR 5.1 - 16	11 JUL 2024	ENR 5.4 - 5	17 APR 2025
ENR 5.1 - 17	11 JUL 2024	ENR 5.4 - 6	17 APR 2025
ENR 5.1 - 18	11 JUL 2024	ENR 5.5 - 1	30 NOV 2023
ENR 5.1 - 19	11 JUL 2024	ENR 5.5 - 2	07 SEP 2023
ENR 5.1 - 20	11 JUL 2024	ENR 5.5 - 3	05 SEP 2024
ENR 5.1 - 21	11 JUL 2024	ENR 5.5 - 4	05 SEP 2024
ENR 5.1 - 22	11 JUL 2024	ENR 5.5 - 5	05 SEP 2024
ENR 5.2 - 1	07 SEP 2023	ENR 5.5 - 6	05 SEP 2024
ENR 5.2 - 2	07 SEP 2023	ENR 5.6 - 1	07 SEP 2023
ENR 5.2 - 3	07 SEP 2023	ENR 5.6 - 2	15 JUL 2021
ENR 5.2 - 4	18 APR 2024	ENR 6 - 1	16 MAY 2024
ENR 5.2 - 5	20 MAR 2025	ENR 6 - 2	08 MAR 2012
ENR 5.2 - 6	20 MAR 2025	ENR 6.1 - 1	20 MAR 2025
ENR 5.2 - 7	11 JUL 2024	ENR 6.2 - 1	20 MAR 2025
ENR 5.2 - 8	11 JUL 2024	ENR 6.3 - 1	05 SEP 2024
ENR 5.2 - 9	11 JUL 2024	ENR 6.3 - 2	05 SEP 2024
ENR 5.2 - 10	11 JUL 2024	ENR 6.3 - 3	28 DEC 2023
ENR 5.2 - 11	11 JUL 2024	ENR 6.3 - 4	28 DEC 2023
ENR 5.2 - 12	20 MAR 2025	ENR 6.4 - 1	16 MAY 2024
ENR 5.2 - 13	20 MAR 2025	ENR 6.4 - 2	16 MAY 2024
ENR 5.2 - 14	20 MAR 2025	ENR 6.5 - 1	20 MAR 2025
ENR 5.2 - 15	20 MAR 2025	ENR 6.5 - 2	20 MAR 2025
ENR 5.2 - 16	20 MAR 2025	ENR 6.5 - 3	20 MAR 2025
ENR 5.2 - 17	20 MAR 2025	ENR 6.5 - 4	20 MAR 2025
ENR 5.2 - 18	20 MAR 2025	ENR 6.6 - 1	08 MAR 2012
ENR 5.2 - 19	20 MAR 2025	ENR 6.6 - 2	08 MAR 2012
ENR 5.2 - 20	20 MAR 2025	ENR 6.7 - 1	05 SEP 2024
ENR 5.2 - 21	20 MAR 2025	ENR 6.7 - 2	05 SEP 2024
ENR 5.2 - 22	20 MAR 2025	ENR 6.8 - 1	20 MAR 2025
ENR 5.2 - 23	20 MAR 2025	ENR 6.8 - 2	20 MAR 2025
ENR 5.2 - 24	20 MAR 2025	ENR 6.9 - 1	08 MAR 2012
ENR 5.2 - 25	20 MAR 2025	ENR 6.9 - 2	08 MAR 2012
ENR 5.2 - 26	20 MAR 2025	ENR 6.10 - 1	08 MAR 2012
ENR 5.2 - 27	20 MAR 2025	ENR 6.10 - 2	08 MAR 2012
ENR 5.2 - 28	20 MAR 2025	ENR 6.11 - 1	20 MAR 2025
ENR 5.2 - 29	20 MAR 2025	ENR 6.11 - 2	20 MAR 2025
ENR 5.2 - 30	20 MAR 2025	ENR 6.12 - 1	14 JUL 2022
ENR 5.2 - 31	20 MAR 2025	ENR 6.12 - 2	14 JUL 2022
ENR 5.2 - 32	20 MAR 2025	ENR 6.14 - 1	28 DEC 2023
ENR 5.2 - 33	20 MAR 2025	ENR 6.14 - 2	28 DEC 2023
ENR 5.2 - 34	20 MAR 2025	ENR 6.15 - 1	28 DEC 2023
ENR 5.2 - 35	20 MAR 2025	ENR 6.15 - 2	28 DEC 2023
ENR 5.2 - 36	20 MAR 2025		
ENR 5.2 - 37	20 MAR 2025		
ENR 5.2 - 38	20 MAR 2025		
ENR 5.2 - 39	20 MAR 2025		
ENR 5.2 - 40	20 MAR 2025		
		<b>PART 3 - AERODROMES (AD)</b>	
		AD 0.1 - 1	08 MAR 2012

Page	Date	Page	Date
AD 0.1 - 2	08 MAR 2012	LDDU AD 2.24.10 STAR RNAV RWY 29 - 2	23 JAN 2025
AD 0.2 - 1	08 MAR 2012	LDDU AD 2.24.10 STAR RNAV RWY 29 - 3	23 JAN 2025
AD 0.2 - 2	08 MAR 2012	LDDU AD 2.24.10 STAR RNAV RWY 29 - 4	23 JAN 2025
AD 0.3 - 1	08 MAR 2012	LDDU AD 2.24.10 STAR RNAV RWY 29 - 5	23 JAN 2025
AD 0.3 - 2	08 MAR 2012	LDDU AD 2.24.10 STAR RNAV RWY 29 - 6	23 JAN 2025
AD 0.4 - 1	08 MAR 2012	LDDU AD 2.24.11 ATCSMAC - 1	20 MAR 2025
AD 0.4 - 2	08 MAR 2012	LDDU AD 2.24.11 ATCSMAC - 2	20 MAR 2025
AD 0.5 - 1	08 MAR 2012	LDDU AD 2.24.12 IAC VOR RWY 11 - 1	20 MAR 2025
AD 0.5 - 2	08 MAR 2012	LDDU AD 2.24.12 IAC VOR RWY 11 - 2	20 MAR 2025
AD 0.6 - 1	20 MAR 2025	LDDU AD 2.24.12 IAC ILSy or LOCy RWY 11 - 1	20 MAR 2025
AD 0.6 - 2	20 MAR 2025	LDDU AD 2.24.12 IAC ILSy or LOCy RWY 11 - 2	20 MAR 2025
AD 0.6 - 3	20 MAR 2025	LDDU AD 2.24.12 IAC ILSz or LOCz RWY 11 - 1	20 MAR 2025
AD 0.6 - 4	20 MAR 2025	LDDU AD 2.24.12 IAC ILSz or LOCz RWY 11 - 2	20 MAR 2025
AD 0.6 - 5	20 MAR 2025	LDDU AD 2.24.12 IAC RNP RWY 11 - 1	20 MAR 2025
AD 0.6 - 6	20 MAR 2025	LDDU AD 2.24.12 IAC RNP RWY 11 - 2	20 MAR 2025
AD 0.6 - 7	20 MAR 2025	LDDU AD 2.24.12 IAC RNP RWY 11 - 3	20 MAR 2025
AD 0.6 - 8	20 MAR 2025	LDDU AD 2.24.12 IAC RNP RWY 11 - 4	20 MAR 2025
AD 0.6 - 9	20 MAR 2025	LDDU AD 2.24.12 IAC RNP RWY 29 (AR) - 1	20 MAR 2025
AD 0.6 - 10	20 MAR 2025	LDDU AD 2.24.12 IAC RNP RWY 29 (AR) - 2	20 MAR 2025
AD 1.1 - 1	13 JUL 2023	LDDU AD 2.24.12 IAC RNP-b RWY 29 - 1	20 MAR 2025
AD 1.1 - 2	23 JAN 2025	LDDU AD 2.24.12 IAC RNP-b RWY 29 - 2	20 MAR 2025
AD 1.2 - 1	08 AUG 2024	LDDU AD 2.24.12 IAC RNP-b RWY 29 - 3	20 MAR 2025
AD 1.2 - 2	13 JUL 2023	LDDU AD 2.24.12 IAC RNP-b RWY 29 - 4	20 MAR 2025
AD 1.3 - 1	03 OCT 2024	LDDU AD 2.24.13 VAC RWY 29 - 1	20 MAR 2025
AD 1.3 - 2	31 OCT 2024	LDDU AD 2.24.13 VAC RWY 29 - 2	20 MAR 2025
AD 1.4 - 1	13 JUL 2023	LDDU AD 2.24.13 VOC - 1	20 MAR 2025
AD 1.4 - 2	08 MAR 2012	LDDU AD 2.24.13 VOC - 2	20 MAR 2025
AD 1.5 - 1	08 AUG 2024	LDDU AD 2.24.14 BC - 1	28 MAR 2019
AD 1.5 - 2	08 MAR 2012	LDDU AD 2.24.14 BC - 2	28 MAR 2019
LDDU AD 2 - 1	30 NOV 2023	LDLO AD 2 - 1	30 NOV 2023
LDDU AD 2 - 2	30 NOV 2023	LDLO AD 2 - 2	28 NOV 2024
LDDU AD 2 - 3	30 NOV 2023	LDLO AD 2 - 3	28 NOV 2024
LDDU AD 2 - 4	08 AUG 2024	LDLO AD 2 - 4	20 FEB 2025
LDDU AD 2 - 5	20 MAR 2025	LDLO AD 2 - 5	20 FEB 2025
LDDU AD 2 - 6	20 MAR 2025	LDLO AD 2 - 6	20 FEB 2025
LDDU AD 2 - 7	20 FEB 2025	LDLO AD 2 - 7	28 NOV 2024
LDDU AD 2 - 8	20 MAR 2025	LDLO AD 2 - 8	28 NOV 2024
LDDU AD 2 - 9	20 MAR 2025	LDLO AD 2 - 9	28 NOV 2024
LDDU AD 2 - 10	20 MAR 2025	LDLO AD 2 - 10	28 NOV 2024
LDDU AD 2 - 11	20 MAR 2025	LDLO AD 2 - 11	28 NOV 2024
LDDU AD 2 - 12	20 MAR 2025	LDLO AD 2 - 12	22 FEB 2024
LDDU AD 2 - 13	20 MAR 2025	LDLO AD 2 - 13	21 MAR 2024
LDDU AD 2 - 14	20 MAR 2025	LDLO AD 2 - 14	21 MAR 2024
LDDU AD 2 - 15	20 MAR 2025	LDLO AD 2 - 15	21 MAR 2024
LDDU AD 2 - 16	20 MAR 2025	LDLO AD 2 - 16	16 MAY 2024
LDDU AD 2 - 17	20 MAR 2025	LDLO AD 2.24.1 ADC - 1	23 FEB 2023
LDDU AD 2 - 18	31 OCT 2024	LDLO AD 2.24.1 ADC - 2	23 FEB 2023
LDDU AD 2 - 19	31 OCT 2024	LDLO AD 2.24.2 APDC - 1	25 APR 2019
LDDU AD 2 - 20	31 OCT 2024	LDLO AD 2.24.2 APDC - 2	25 APR 2019
LDDU AD 2 - 21	31 OCT 2024	LDLO AD 2.24.4 AOC RWY 02/20 - 1	25 APR 2019
LDDU AD 2 - 22	20 MAR 2025	LDLO AD 2.24.8 SID RWY 02 - 1	23 JAN 2025
LDDU AD 2 - 23	20 FEB 2025	LDLO AD 2.24.8 SID RWY 02 - 2	23 JAN 2025
LDDU AD 2 - 24	20 MAR 2025	LDLO AD 2.24.8 SID RNAV RWY 02 CAT A&B - 1	20 MAR 2025
LDDU AD 2 - 25	20 MAR 2025	LDLO AD 2.24.8 SID RNAV RWY 02 CAT A&B - 2	20 MAR 2025
LDDU AD 2 - 26	20 MAR 2025	LDLO AD 2.24.8 SID RWY 20 - 1	23 JAN 2025
LDDU AD 2 - 27	20 MAR 2025	LDLO AD 2.24.8 SID RWY 20 - 2	23 JAN 2025
LDDU AD 2 - 28	20 MAR 2025	LDLO AD 2.24.8 SID RNAV RWY 20 CAT A & B - 1	20 MAR 2025
LDDU AD 2.24.1 ADC - 1	21 MAY 2020	LDLO AD 2.24.8 SID RNAV RWY 20 CAT A & B - 2	20 MAR 2025
LDDU AD 2.24.1 ADC - 2	21 MAY 2020	LDLO AD 2.24.10 STAR RWY 02/20 - 1	23 JAN 2025
LDDU AD 2.24.2 APDC - 1	13 JUN 2024	LDLO AD 2.24.10 STAR RWY 02/20 - 2	23 JAN 2025
LDDU AD 2.24.2 APDC - 2	13 JUN 2024	LDLO AD 2.24.10 STAR RNAV RWY 02 CAT A & B - 1	20 MAR 2025
LDDU AD 2.24.4 AOC RWY 11 - 1	20 FEB 2025	LDLO AD 2.24.10 STAR RNAV RWY 02 CAT A & B - 2	20 MAR 2025
LDDU AD 2.24.4 AOC RWY 29 - 1	28 NOV 2024	LDLO AD 2.24.10 STAR RNAV RWY 20 CAT A & B - 1	20 MAR 2025
LDDU AD 2.24.8 SID RWY 11 - 1	20 MAR 2025	LDLO AD 2.24.10 STAR RNAV RWY 20 CAT A & B - 2	20 MAR 2025
LDDU AD 2.24.8 SID RWY 11 - 2	20 MAR 2025	LDLO AD 2.24.12 IAC NDB-a RWY 02/20 CAT A&B - 1	23 JAN 2025
LDDU AD 2.24.8 SID RNAV RWY 11 - 1	20 MAR 2025	LDLO AD 2.24.12 IAC NDB-a RWY 02/20 CAT A&B - 2	23 JAN 2025
LDDU AD 2.24.8 SID RNAV RWY 11 - 2	20 MAR 2025	LDLO AD 2.24.12 IAC VOR RWY02 CAT A&B - 1	23 JAN 2025
LDDU AD 2.24.8 SID RNAV RWY 11 - 3	20 MAR 2025	LDLO AD 2.24.12 IAC VOR RWY02 CAT A&B - 2	23 JAN 2025
LDDU AD 2.24.8 SID RNAV RWY 11 - 4	20 MAR 2025	LDLO AD 2.24.12 IAC RNP RWY 02 - 1	23 JAN 2025
LDDU AD 2.24.8 SID RWY 29 - 1	20 MAR 2025	LDLO AD 2.24.12 IAC RNP RWY 02 - 2	23 JAN 2025
LDDU AD 2.24.8 SID RWY 29 - 2	20 MAR 2025	LDLO AD 2.24.12 IAC RNP RWY 02 - 3	23 JAN 2025
LDDU AD 2.24.8 SID RNAV RWY 29 - 1	20 MAR 2025	LDLO AD 2.24.12 IAC RNP RWY 02 - 4	23 JAN 2025
LDDU AD 2.24.8 SID RNAV RWY 29 - 2	20 MAR 2025	LDLO AD 2.24.12 IAC RNP RWY 20 (LPV & LNAV/VNAV only) - 123 JAN 2025	
LDDU AD 2.24.10 STAR RWY 11 - 1	20 MAR 2025	LDLO AD 2.24.12 IAC RNP RWY 20 (LPV & LNAV/VNAV only) - 223 JAN 2025	
LDDU AD 2.24.10 STAR RWY 11 - 2	20 MAR 2025	LDLO AD 2.24.12 IAC RNP RWY 20 (LPV & LNAV/VNAV only) - 323 JAN 2025	
LDDU AD 2.24.10 STAR RNAV RWY 11 - 1	23 JAN 2025		
LDDU AD 2.24.10 STAR RNAV RWY 11 - 2	23 JAN 2025		
LDDU AD 2.24.10 STAR RNAV RWY 11 - 3	23 JAN 2025		
LDDU AD 2.24.10 STAR RNAV RWY 11 - 4	23 JAN 2025		
LDDU AD 2.24.10 STAR RNAV RWY 11 - 5	23 JAN 2025		
LDDU AD 2.24.10 STAR RNAV RWY 11 - 6	23 JAN 2025		
LDDU AD 2.24.10 STAR RNAV RWY 29 - 1	23 JAN 2025	LDLO AD 2.24.13 VOC - 1	23 JAN 2025
		LDLO AD 2.24.13 VOC - 2	23 JAN 2025

Page	Date	Page	Date
LDOS AD 2 - 1	30 NOV 2023	LDPL AD 2.24.2 APDC - 2	20 MAR 2025
LDOS AD 2 - 2	16 MAY 2024	LDPL AD 2.24.4 AOC RWY 09/27 - 1	28 MAR 2019
LDOS AD 2 - 3	08 AUG 2024	LDPL AD 2.24.8 SID RWY 09 - 1	20 MAR 2025
LDOS AD 2 - 4	23 JAN 2025	LDPL AD 2.24.8 SID RWY 09 - 2	20 MAR 2025
LDOS AD 2 - 5	20 FEB 2025	LDPL AD 2.24.8 SID RNAV RWY 09 - 1	20 MAR 2025
LDOS AD 2 - 6	30 NOV 2023	LDPL AD 2.24.8 SID RNAV RWY 09 - 2	20 MAR 2025
LDOS AD 2 - 7	23 JAN 2025	LDPL AD 2.24.8 SID RNAV RWY 09 - 3	20 MAR 2025
LDOS AD 2 - 8	28 DEC 2023	LDPL AD 2.24.8 SID RNAV RWY 09 - 4	20 MAR 2025
LDOS AD 2 - 9	18 APR 2024	LDPL AD 2.24.8 SID RWY 27 - 1	20 MAR 2025
LDOS AD 2 - 10	23 JAN 2025	LDPL AD 2.24.8 SID RWY 27 - 2	20 MAR 2025
LDOS AD 2 - 11	23 JAN 2025	LDPL AD 2.24.8 SID RNAV RWY 27 - 1	20 MAR 2025
LDOS AD 2 - 12	23 JAN 2025	LDPL AD 2.24.8 SID RNAV RWY 27 - 2	20 MAR 2025
LDOS AD 2 - 13	23 JAN 2025	LDPL AD 2.24.8 SID RNAV RWY 27 - 3	20 MAR 2025
LDOS AD 2 - 14	13 JUN 2024	LDPL AD 2.24.8 SID RNAV RWY 27 - 4	20 MAR 2025
LDOS AD 2 - 15	16 MAY 2024	LDPL AD 2.24.10 STAR RWY 09 - 1	20 MAR 2025
LDOS AD 2 - 16	30 NOV 2023	LDPL AD 2.24.10 STAR RWY 09 - 2	20 MAR 2025
LDOS AD 2.24.1 ADC - 1	23 JAN 2025	LDPL AD 2.24.10 STAR RWY 27 - 1	20 MAR 2025
LDOS AD 2.24.1 ADC - 2	23 JAN 2025	LDPL AD 2.24.10 STAR RWY 27 - 2	20 MAR 2025
LDOS AD 2.24.2 APDC - 1	18 APR 2024	LDPL AD 2.24.10 STAR RNAV RWY 09 - 1	20 MAR 2025
LDOS AD 2.24.2 APDC - 2	18 APR 2024	LDPL AD 2.24.10 STAR RNAV RWY 09 - 2	20 MAR 2025
LDOS AD 2.24.4 AOC RWY 11/29 - 1	20 JUN 2019	LDPL AD 2.24.10 STAR RNAV RWY 09 - 3	20 MAR 2025
LDOS AD 2.24.8 SID RWY 11 - 1	05 SEP 2024	LDPL AD 2.24.10 STAR RNAV RWY 09 - 4	20 MAR 2025
LDOS AD 2.24.8 SID RWY 11 - 2	05 SEP 2024	LDPL AD 2.24.10 STAR RNAV RWY 27 - 1	20 MAR 2025
LDOS AD 2.24.8 SID RNP RWY 11 - 1	03 OCT 2024	LDPL AD 2.24.10 STAR RNAV RWY 27 - 2	20 MAR 2025
LDOS AD 2.24.8 SID RNP RWY 11 - 2	03 OCT 2024	LDPL AD 2.24.10 STAR RNAV RWY 27 - 3	20 MAR 2025
LDOS AD 2.24.8 SID RWY 29 - 1	05 SEP 2024	LDPL AD 2.24.10 STAR RNAV RWY 27 - 4	20 MAR 2025
LDOS AD 2.24.8 SID RWY 29 - 2	05 SEP 2024	LDPL AD 2.24.11 ATCSMAC - 1	20 MAR 2025
LDOS AD 2.24.8 SID RNP RWY 29 - 1	03 OCT 2024	LDPL AD 2.24.11 ATCSMAC - 2	20 MAR 2025
LDOS AD 2.24.8 SID RNP RWY 29 - 2	03 OCT 2024	LDPL AD 2.24.12 IAC VOR RWY 09 - 1	20 MAR 2025
LDOS AD 2.24.10 STAR RWY 11 - 1	05 SEP 2024	LDPL AD 2.24.12 IAC VOR RWY 09 - 2	20 MAR 2025
LDOS AD 2.24.10 STAR RWY 11 - 2	05 SEP 2024	LDPL AD 2.24.12 IAC VOR RWY 27 - 1	20 MAR 2025
LDOS AD 2.24.10 STAR RNP RWY 11 - 1	03 OCT 2024	LDPL AD 2.24.12 IAC VOR RWY 27 - 2	20 MAR 2025
LDOS AD 2.24.10 STAR RNP RWY 11 - 2	03 OCT 2024	LDPL AD 2.24.12 IAC ILS y or LOC y RWY 27 - 1	20 MAR 2025
LDOS AD 2.24.10 STAR RWY 29 - 1	05 SEP 2024	LDPL AD 2.24.12 IAC ILS y or LOC y RWY 27 - 2	20 MAR 2025
LDOS AD 2.24.10 STAR RWY 29 - 2	05 SEP 2024	LDPL AD 2.24.12 IAC ILS z or LOC z RWY 27 - 1	20 MAR 2025
LDOS AD 2.24.10 STAR RNP RWY 29 - 1	03 OCT 2024	LDPL AD 2.24.12 IAC ILS z or LOC z RWY 27 - 2	20 MAR 2025
LDOS AD 2.24.10 STAR RNP RWY 29 - 2	03 OCT 2024	LDPL AD 2.24.12 IAC RNP RWY 09 - 1	20 MAR 2025
LDOS AD 2.24.11 ATCSMAC - 1	05 SEP 2024	LDPL AD 2.24.12 IAC RNP RWY 09 - 2	20 MAR 2025
LDOS AD 2.24.11 ATCSMAC - 2	05 SEP 2024	LDPL AD 2.24.12 IAC RNP RWY 09 - 3	20 MAR 2025
LDOS AD 2.24.12 IAC L RWY 11 - 1	13 JUN 2024	LDPL AD 2.24.12 IAC RNP RWY 09 - 4	20 MAR 2025
LDOS AD 2.24.12 IAC L RWY 11 - 2	13 JUN 2024	LDPL AD 2.24.12 IAC RNP RWY 27 - 1	20 MAR 2025
LDOS AD 2.24.12 IAC ILS or LOC RWY 11 - 1	13 JUN 2024	LDPL AD 2.24.12 IAC RNP RWY 27 - 2	20 MAR 2025
LDOS AD 2.24.12 IAC ILS or LOC RWY 11 - 2	13 JUN 2024	LDPL AD 2.24.12 IAC RNP RWY 27 - 3	20 MAR 2025
LDOS AD 2.24.12 IAC NDB RWY 11 - 1	13 JUN 2024	LDPL AD 2.24.12 IAC RNP RWY 27 - 4	20 MAR 2025
LDOS AD 2.24.12 IAC NDB RWY 11 - 2	13 JUN 2024	LDPL AD 2.24.13 VOC - 1	20 MAR 2025
LDOS AD 2.24.12 IAC NDB RWY 29 - 1	13 JUN 2024	LDPL AD 2.24.13 VOC - 2	20 MAR 2025
LDOS AD 2.24.12 IAC NDB RWY 29 - 2	13 JUN 2024	LDPL AD 2.24.14 BC - 1	08 MAR 2012
LDOS AD 2.24.12 IAC ILSx or LOCx RWY 29 CAT A&B - 1	13 JUN 2024	LDPL AD 2.24.14 BC - 2	08 MAR 2012
LDOS AD 2.24.12 IAC ILSx or LOCx RWY 29 CAT A&B - 2	13 JUN 2024	LDRI AD 2 - 1	17 APR 2025
LDOS AD 2.24.12 IAC ILSy or LOCy RWY 29 - 1	13 JUN 2024	LDRI AD 2 - 2	17 APR 2025
LDOS AD 2.24.12 IAC ILSy or LOCy RWY 29 - 2	13 JUN 2024	LDRI AD 2 - 3	08 AUG 2024
LDOS AD 2.24.12 IAC ILS z or LOC z RWY 29 - 1	13 JUN 2024	LDRI AD 2 - 4	20 FEB 2025
LDOS AD 2.24.12 IAC ILS z or LOC z RWY 29 - 2	13 JUN 2024	LDRI AD 2 - 5	20 FEB 2025
LDOS AD 2.24.12 IAC RNP RWY 11 - 1	13 JUN 2024	LDRI AD 2 - 6	08 AUG 2024
LDOS AD 2.24.12 IAC RNP RWY 11 - 2	13 JUN 2024	LDRI AD 2 - 7	08 AUG 2024
LDOS AD 2.24.12 IAC RNP RWY 11 - 3	13 JUN 2024	LDRI AD 2 - 8	17 APR 2025
LDOS AD 2.24.12 IAC RNP RWY 11 - 4	13 JUN 2024	LDRI AD 2 - 9	08 AUG 2024
LDOS AD 2.24.12 IAC RNP-a RWY 29 - 1	13 JUN 2024	LDRI AD 2 - 10	17 APR 2025
LDOS AD 2.24.12 IAC RNP-a RWY 29 - 2	13 JUN 2024	LDRI AD 2 - 11	08 AUG 2024
LDOS AD 2.24.13 VOC - 1	13 JUN 2024	LDRI AD 2 - 12	08 AUG 2024
LDOS AD 2.24.13 VOC - 2	13 JUN 2024	LDRI AD 2 - 13	08 AUG 2024
LDPL AD 2 - 1	11 JUL 2024	LDRI AD 2 - 14	08 AUG 2024
LDPL AD 2 - 2	11 JUL 2024	LDRI AD 2 - 15	20 MAR 2025
LDPL AD 2 - 3	13 JUN 2024	LDRI AD 2 - 16	08 AUG 2024
LDPL AD 2 - 4	17 APR 2025	LDRI AD 2.24.1 ADC - 1	13 AUG 2020
LDPL AD 2 - 5	20 FEB 2025	LDRI AD 2.24.1 ADC - 2	13 AUG 2020
LDPL AD 2 - 6	20 FEB 2025	LDRI AD 2.24.2 APDC - 1	03 NOV 2022
LDPL AD 2 - 7	13 JUN 2024	LDRI AD 2.24.2 APDC - 2	03 NOV 2022
LDPL AD 2 - 8	13 JUN 2024	LDRI AD 2.24.4 AOC RWY 14/32 - 1	28 MAR 2019
LDPL AD 2 - 9	03 OCT 2024	LDRI AD 2.24.8 SID RWY 14 - 1	26 DEC 2024
LDPL AD 2 - 10	15 JUN 2023	LDRI AD 2.24.8 SID RWY 14 - 2	26 DEC 2024
LDPL AD 2 - 11	15 JUN 2023	LDRI AD 2.24.8 SID RNAV RWY 14 - 1	26 DEC 2024
LDPL AD 2 - 12	20 MAR 2025	LDRI AD 2.24.8 SID RNAV RWY 14 - 2	26 DEC 2024
LDPL AD 2 - 13	03 OCT 2024	LDRI AD 2.24.8 SID RNAV RWY 14 - 3	26 DEC 2024
LDPL AD 2 - 14	13 JUN 2024	LDRI AD 2.24.8 SID RNAV RWY 14 - 4	26 DEC 2024
LDPL AD 2 - 15	23 APR 2020	LDRI AD 2.24.8 SID RWY 32 - 1	26 DEC 2024
LDPL AD 2 - 16	23 APR 2020	LDRI AD 2.24.8 SID RWY 32 - 2	26 DEC 2024
LDPL AD 2 - 17	15 JUN 2023	LDRI AD 2.24.8 SID RNAV RWY 32 - 1	26 DEC 2024
LDPL AD 2 - 18	28 DEC 2023	LDRI AD 2.24.8 SID RNAV RWY 32 - 2	26 DEC 2024
LDPL AD 2.24.1 ADC - 1	02 DEC 2021	LDRI AD 2.24.8 SID RNAV RWY 32 - 3	26 DEC 2024
LDPL AD 2.24.1 ADC - 2	02 DEC 2021	LDRI AD 2.24.8 SID RNAV RWY 32 - 4	26 DEC 2024
LDPL AD 2.24.2 APDC - 1	20 MAR 2025	LDRI AD 2.24.10 STAR RWY 14/32 - 1	26 DEC 2024

Page	Date	Page	Date
LDRI AD 2.24.10 STAR RWY 14/32 - 2	26 DEC 2024	LDSP AD 2 - 7	20 FEB 2025
LDRI AD 2.24.10 STAR RNAV RWY 14 - 1	26 DEC 2024	LDSP AD 2 - 8	20 FEB 2025
LDRI AD 2.24.10 STAR RNAV RWY 14 - 2	26 DEC 2024	LDSP AD 2 - 9	20 FEB 2025
LDRI AD 2.24.10 STAR RNAV RWY 32 - 1	26 DEC 2024	LDSP AD 2 - 10	20 FEB 2025
LDRI AD 2.24.10 STAR RNAV RWY 32 - 2	26 DEC 2024	LDSP AD 2 - 11	20 FEB 2025
LDRI AD 2.24.10 STAR RNAV RWY 32 - 3	26 DEC 2024	LDSP AD 2 - 12	20 FEB 2025
LDRI AD 2.24.10 STAR RNAV RWY 32 - 4	26 DEC 2024	LDSP AD 2 - 13	20 FEB 2025
LDRI AD 2.24.12 IAC VOR RWY 14 - 1	26 DEC 2024	LDSP AD 2 - 14	20 FEB 2025
LDRI AD 2.24.12 IAC VOR RWY 14 - 2	26 DEC 2024	LDSP AD 2 - 15	16 MAY 2024
LDRI AD 2.24.12 IAC ILS y or LOC y RWY 14 - 1	26 DEC 2024	LDSP AD 2 - 16	08 AUG 2024
LDRI AD 2.24.12 IAC ILS y or LOC y RWY 14 - 2	26 DEC 2024	LDSP AD 2 - 17	21 MAR 2024
LDRI AD 2.24.12 IAC ILS z or LOC z RWY 14 - 1	26 DEC 2024	LDSP AD 2 - 18	21 MAR 2024
LDRI AD 2.24.12 IAC ILS z or LOC z RWY 14 - 2	26 DEC 2024	LDSP AD 2 - 19	21 MAR 2024
LDRI AD 2.24.12 IAC ILS z or LOC z RWY 14 - 3	26 DEC 2024	LDSP AD 2 - 20	08 AUG 2024
LDRI AD 2.24.12 IAC ILS z or LOC z RWY 14 - 4	26 DEC 2024	LDSP AD 2 - 21	21 MAR 2024
LDRI AD 2.24.12 IAC RNP RWY 14 - 1	26 DEC 2024	LDSP AD 2 - 22	21 MAR 2024
LDRI AD 2.24.12 IAC RNP RWY 14 - 2	26 DEC 2024	LDSP AD 2 - 23	21 MAR 2024
LDRI AD 2.24.12 IAC RNP RWY 14 - 3	26 DEC 2024	LDSP AD 2 - 24	21 MAR 2024
LDRI AD 2.24.12 IAC RNP RWY 14 - 4	26 DEC 2024	LDSP AD 2 - 25	21 MAR 2024
LDRI AD 2.24.12 IAC RNP RWY 32 - 1	26 DEC 2024	LDSP AD 2 - 26	21 MAR 2024
LDRI AD 2.24.12 IAC RNP RWY 32 - 2	26 DEC 2024	LDSP AD 2 - 27	21 MAR 2024
LDRI AD 2.24.12 IAC RNP RWY 32 - 3	26 DEC 2024	LDSP AD 2 - 28	21 MAR 2024
LDRI AD 2.24.12 IAC RNP RWY 32 - 4	26 DEC 2024	LDSP AD 2 - 29	08 AUG 2024
LDRI AD 2.24.12 IAC VOR RWY 32 - 1	26 DEC 2024	LDSP AD 2 - 30	21 MAR 2024
LDRI AD 2.24.12 IAC VOR RWY 32 - 2	26 DEC 2024	LDSP AD 2.24.1 ADC - 1	28 DEC 2023
LDRI AD 2.24.13 VOC - 1	26 DEC 2024	LDSP AD 2.24.1 ADC - 2	28 DEC 2023
LDRI AD 2.24.13 VOC - 2	26 DEC 2024	LDSP AD 2.24.2 APDC - 1	28 DEC 2023
LDSB AD 2 - 1	18 APR 2024	LDSP AD 2.24.2 APDC - 2	28 DEC 2023
LDSB AD 2 - 2	20 MAR 2025	LDSP AD 2.24.4 AOC RWY 05 - 1	20 JUN 2019
LDSB AD 2 - 3	20 MAR 2025	LDSP AD 2.24.4 AOC RWY 23 - 1	20 JUN 2019
LDSB AD 2 - 4	20 MAR 2025	LDSP AD 2.24.8 SID RWY 05 - 1	03 OCT 2024
LDSB AD 2 - 5	20 MAR 2025	LDSP AD 2.24.8 SID RWY 05 - 2	03 OCT 2024
LDSB AD 2 - 6	30 NOV 2023	LDSP AD 2.24.8 SID RNAV RWY 05 - 1	03 OCT 2024
LDSB AD 2 - 7	30 NOV 2023	LDSP AD 2.24.8 SID RNAV RWY 05 - 2	03 OCT 2024
LDSB AD 2 - 8	28 DEC 2023	LDSP AD 2.24.8 SID RNAV RWY 05 - 3	03 OCT 2024
LDSB AD 2 - 9	28 DEC 2023	LDSP AD 2.24.8 SID RNAV RWY 05 - 4	03 OCT 2024
LDSB AD 2 - 10	20 MAY 2021	LDSP AD 2.24.8 SID RWY 23 - 1	03 OCT 2024
LDSB AD 2 - 11	20 MAY 2021	LDSP AD 2.24.8 SID RWY 23 - 2	03 OCT 2024
LDSB AD 2 - 12	20 MAY 2021	LDSP AD 2.24.8 SID RNAV RWY 23 - 1	03 OCT 2024
LDSB AD 2 - 13	08 AUG 2024	LDSP AD 2.24.8 SID RNAV RWY 23 - 2	03 OCT 2024
LDSB AD 2 - 14	30 NOV 2023	LDSP AD 2.24.8 SID RNAV RWY 23 - 3	03 OCT 2024
LDSB AD 2.24.1 ADC - 1	07 SEP 2023	LDSP AD 2.24.8 SID RNAV RWY 23 - 4	03 OCT 2024
LDSB AD 2.24.1 ADC - 2	07 SEP 2023	LDSP AD 2.24.10 STAR RWY 05 - 1	03 OCT 2024
LDSB AD 2.24.2 APDC - 1	20 JUN 2019	LDSP AD 2.24.10 STAR RWY 05 - 2	03 OCT 2024
LDSB AD 2.24.2 APDC - 2	20 JUN 2019	LDSP AD 2.24.10 STAR RNAV RWY 05 - 1	03 OCT 2024
LDSB AD 2.24.4 AOC RWY 03/21 - 1	20 MAY 2021	LDSP AD 2.24.10 STAR RNAV RWY 05 - 2	03 OCT 2024
LDSB AD 2.24.8 SID RWY 03 CAT A/B&C - 1	03 OCT 2024	LDSP AD 2.24.10 STAR RNAV RWY 05 - 3	03 OCT 2024
LDSB AD 2.24.8 SID RWY 03 CAT A/B&C - 2	03 OCT 2024	LDSP AD 2.24.10 STAR RNAV RWY 05 - 4	03 OCT 2024
LDSB AD 2.24.8 SID RNAV RWY 03 - 1	03 OCT 2024	LDSP AD 2.24.10 STAR RNAV RWY 05 - 5	03 OCT 2024
LDSB AD 2.24.8 SID RNAV RWY 03 - 2	03 OCT 2024	LDSP AD 2.24.10 STAR RNAV RWY 05 - 6	03 OCT 2024
LDSB AD 2.24.8 SID RWY 21 CAT A/B&C - 1	03 OCT 2024	LDSP AD 2.24.10 STAR RWY 23 - 1	03 OCT 2024
LDSB AD 2.24.8 SID RWY 21 CAT A/B&C - 2	03 OCT 2024	LDSP AD 2.24.10 STAR RWY 23 - 2	03 OCT 2024
LDSB AD 2.24.8 SID RNAV RWY 21 - 1	03 OCT 2024	LDSP AD 2.24.10 STAR RNAV RWY 23 - 1	03 OCT 2024
LDSB AD 2.24.8 SID RNAV RWY 21 - 2	03 OCT 2024	LDSP AD 2.24.10 STAR RNAV RWY 23 - 2	03 OCT 2024
LDSB AD 2.24.10 STAR RWY 03/21 CAT A/B&C - 1	03 OCT 2024	LDSP AD 2.24.10 STAR RNAV RWY 23 - 3	03 OCT 2024
LDSB AD 2.24.10 STAR RWY 03/21 CAT A/B&C - 2	03 OCT 2024	LDSP AD 2.24.10 STAR RNAV RWY 23 - 4	03 OCT 2024
LDSB AD 2.24.10 STAR RNAV RWY 03-21 - 1	03 OCT 2024	LDSP AD 2.24.10 STAR RNAV RWY 23 - 5	03 OCT 2024
LDSB AD 2.24.10 STAR RNAV RWY 03-21 - 2	03 OCT 2024	LDSP AD 2.24.10 STAR RNAV RWY 23 - 6	03 OCT 2024
LDSB AD 2.24.12 IAC NDB RWY 03 - 1	03 OCT 2024	LDSP AD 2.24.11 ATCSMAC - 1	03 OCT 2024
LDSB AD 2.24.12 IAC NDB RWY 03 - 2	03 OCT 2024	LDSP AD 2.24.11 ATCSMAC - 2	03 OCT 2024
LDSB AD 2.24.12 IAC VOR-a RWY 03/21 - 1	08 AUG 2024	LDSP AD 2.24.12 IAC NDB RWY 05 - 1	08 AUG 2024
LDSB AD 2.24.12 IAC VOR-a RWY 03/21 - 2	08 AUG 2024	LDSP AD 2.24.12 IAC NDB RWY 05 - 2	08 AUG 2024
LDSB AD 2.24.12 IAC NDB-a RWY 21 - 1	03 OCT 2024	LDSP AD 2.24.12 IAC ILSy or LOCy RWY 05 - 1	08 AUG 2024
LDSB AD 2.24.12 IAC NDB-a RWY 21 - 2	03 OCT 2024	LDSP AD 2.24.12 IAC ILSy or LOCy RWY 05 - 2	08 AUG 2024
LDSB AD 2.24.12 IAC NDB RWY 21 - 1	03 OCT 2024	LDSP AD 2.24.12 IAC ILSz or LOCz RWY 05 - 1	08 AUG 2024
LDSB AD 2.24.12 IAC NDB RWY 21 - 2	03 OCT 2024	LDSP AD 2.24.12 IAC ILSz or LOCz RWY 05 - 2	08 AUG 2024
LDSB AD 2.24.12 IAC RNP RWY 03 - 1	03 OCT 2024	LDSP AD 2.24.12 IAC RNP Y RWY 05 - 1	08 AUG 2024
LDSB AD 2.24.12 IAC RNP RWY 03 - 2	03 OCT 2024	LDSP AD 2.24.12 IAC RNP Y RWY 05 - 2	08 AUG 2024
LDSB AD 2.24.12 IAC RNP RWY 03 - 3	03 OCT 2024	LDSP AD 2.24.12 IAC RNP Z RWY 05 (LPV only) - 1	08 AUG 2024
LDSB AD 2.24.12 IAC RNP RWY 03 - 4	03 OCT 2024	LDSP AD 2.24.12 IAC RNP Z RWY 05 (LPV only) - 2	08 AUG 2024
LDSB AD 2.24.12 IAC RNP RWY 21 - 1	03 OCT 2024	LDSP AD 2.24.12 IAC RNP Z RWY 05 (LPV only) - 3	08 AUG 2024
LDSB AD 2.24.12 IAC RNP RWY 21 - 2	03 OCT 2024	LDSP AD 2.24.12 IAC RNP Z RWY 05 (LPV only) - 4	08 AUG 2024
LDSB AD 2.24.12 IAC RNP RWY 21 - 3	03 OCT 2024	LDSP AD 2.24.12 IAC RNAV VISUAL RWY 23 - 1	08 AUG 2024
LDSB AD 2.24.12 IAC RNP RWY 21 - 4	03 OCT 2024	LDSP AD 2.24.12 IAC RNAV VISUAL RWY 23 - 2	08 AUG 2024
LDSB AD 2.24.13 VOC - 1	03 OCT 2024	LDSP AD 2.24.12 IAC RNAV VISUAL RWY 23 - 3	08 AUG 2024
LDSB AD 2.24.13 VOC - 2	03 OCT 2024	LDSP AD 2.24.12 IAC RNAV VISUAL RWY 23 - 4	08 AUG 2024
LDSP AD 2 - 1	08 AUG 2024	LDSP AD 2.24.12 IAC VOR-b RWY 23 - 1	03 OCT 2024
LDSP AD 2 - 2	30 NOV 2023	LDSP AD 2.24.12 IAC VOR-b RWY 23 - 2	03 OCT 2024
LDSP AD 2 - 3	08 AUG 2024	LDSP AD 2.24.13 VAC RWY 23 - 1	03 OCT 2024
LDSP AD 2 - 4	25 JAN 2024	LDSP AD 2.24.13 VAC RWY 23 - 2	03 OCT 2024
LDSP AD 2 - 5	20 FEB 2025	LDSP AD 2.24.13 VOC - 1	03 OCT 2024
LDSP AD 2 - 6	20 FEB 2025	LDSP AD 2.24.13 VOC - 2	03 OCT 2024

Page	Date	Page	Date
LDSP AD 2.24.14 BC - 1	08 MAR 2012	LDZA AD 2.24.13 VOC - 2	05 SEP 2024
LDSP AD 2.24.14 BC - 2	08 MAR 2012	LDZA AD 2.24.14 BC - 1	23 APR 2020
LDZA AD 2 - 1	30 NOV 2023	LDZA AD 2.24.14 BC - 2	23 APR 2020
LDZA AD 2 - 2	30 NOV 2023	LDZD AD 2 - 1	30 NOV 2023
LDZA AD 2 - 3	30 NOV 2023	LDZD AD 2 - 2	16 MAY 2024
LDZA AD 2 - 4	03 OCT 2024	LDZD AD 2 - 3	08 AUG 2024
LDZA AD 2 - 5	27 FEB 2020	LDZD AD 2 - 4	13 JUN 2024
LDZA AD 2 - 6	20 FEB 2025	LDZD AD 2 - 5	23 JAN 2025
LDZA AD 2 - 7	20 FEB 2025	LDZD AD 2 - 6	20 FEB 2025
LDZA AD 2 - 8	08 AUG 2024	LDZD AD 2 - 7	30 NOV 2023
LDZA AD 2 - 9	08 AUG 2024	LDZD AD 2 - 8	30 NOV 2023
LDZA AD 2 - 10	05 SEP 2024	LDZD AD 2 - 9	20 FEB 2025
LDZA AD 2 - 11	05 SEP 2024	LDZD AD 2 - 10	25 JAN 2024
LDZA AD 2 - 12	05 SEP 2024	LDZD AD 2 - 11	13 JUL 2023
LDZA AD 2 - 13	05 SEP 2024	LDZD AD 2 - 12	13 JUN 2024
LDZA AD 2 - 14	05 SEP 2024	LDZD AD 2 - 13	13 JUN 2024
LDZA AD 2 - 15	05 SEP 2024	LDZD AD 2 - 14	13 JUN 2024
LDZA AD 2 - 16	05 SEP 2024	LDZD AD 2 - 15	13 JUN 2024
LDZA AD 2 - 17	05 SEP 2024	LDZD AD 2 - 16	03 NOV 2022
LDZA AD 2 - 18	05 SEP 2024	LDZD AD 2 - 17	03 NOV 2022
LDZA AD 2 - 19	05 SEP 2024	LDZD AD 2 - 18	08 AUG 2024
LDZA AD 2 - 20	05 SEP 2024	LDZD AD 2.24.1 ADC - 1	23 MAY 2019
LDZA AD 2 - 21	05 SEP 2024	LDZD AD 2.24.1 ADC - 2	23 MAY 2019
LDZA AD 2 - 22	05 SEP 2024	LDZD AD 2.24.2 APDC - 1	10 OCT 2019
LDZA AD 2 - 23	05 SEP 2024	LDZD AD 2.24.2 APDC - 2	10 OCT 2019
LDZA AD 2 - 24	05 SEP 2024	LDZD AD 2.24.4 AOC RWY 04/22 - 1	05 OCT 2023
LDZA AD 2.24.1 ADC - 1	28 NOV 2024	LDZD AD 2.24.4 AOC RWY 13/31 - 1	05 OCT 2023
LDZA AD 2.24.1 ADC - 2	28 NOV 2024	LDZD AD 2.24.8 SID RWY 04 - 1	16 MAY 2024
LDZA AD 2.24.2 APDC EAST - 1	06 OCT 2022	LDZD AD 2.24.8 SID RWY 04 - 2	16 MAY 2024
LDZA AD 2.24.2 APDC EAST - 2	06 OCT 2022	LDZD AD 2.24.8 SID RNAV RWY 04 - 1	16 MAY 2024
LDZA AD 2.24.2 APDC WEST - 1	17 APR 2025	LDZD AD 2.24.8 SID RNAV RWY 04 - 2	16 MAY 2024
LDZA AD 2.24.2 APDC WEST - 2	17 APR 2025	LDZD AD 2.24.8 SID RNAV RWY 04 - 3	16 MAY 2024
LDZA AD 2.24.4 AOC RWY 04/22 - 1	26 MAR 2020	LDZD AD 2.24.8 SID RNAV RWY 04 - 4	16 MAY 2024
LDZA AD 2.24.6 PATC RWY 04 - 1	26 MAR 2020	LDZD AD 2.24.8 SID RWY 13 - 1	18 APR 2024
LDZA AD 2.24.6 PATC RWY 04 - 2	26 MAR 2020	LDZD AD 2.24.8 SID RWY 13 - 2	18 APR 2024
LDZA AD 2.24.8 SID RWY 04 - 1	05 SEP 2024	LDZD AD 2.24.8 SID RNAV RWY 13 - 1	18 APR 2024
LDZA AD 2.24.8 SID RWY 04 - 2	05 SEP 2024	LDZD AD 2.24.8 SID RNAV RWY 13 - 2	18 APR 2024
LDZA AD 2.24.8 SID RNAV RWY 04 - 1	05 SEP 2024	LDZD AD 2.24.8 SID RNAV RWY 13 - 3	18 APR 2024
LDZA AD 2.24.8 SID RNAV RWY 04 - 2	05 SEP 2024	LDZD AD 2.24.8 SID RNAV RWY 13 - 4	18 APR 2024
LDZA AD 2.24.8 SID RNAV RWY 04 - 3	05 SEP 2024	LDZD AD 2.24.8 SID RWY 22 - 1	16 MAY 2024
LDZA AD 2.24.8 SID RNAV RWY 04 - 4	05 SEP 2024	LDZD AD 2.24.8 SID RWY 22 - 2	16 MAY 2024
LDZA AD 2.24.8 SID RWY 22 - 1	05 SEP 2024	LDZD AD 2.24.8 SID RNAV RWY 22 - 1	16 MAY 2024
LDZA AD 2.24.8 SID RNAV RWY 22 - 1	05 SEP 2024	LDZD AD 2.24.8 SID RNAV RWY 22 - 2	16 MAY 2024
LDZA AD 2.24.8 SID RNAV RWY 22 - 2	05 SEP 2024	LDZD AD 2.24.8 SID RWY 31 - 1	18 APR 2024
LDZA AD 2.24.8 SID RNAV RWY 22 - 2	05 SEP 2024	LDZD AD 2.24.8 SID RWY 31 - 2	18 APR 2024
LDZA AD 2.24.8 SID RNAV RWY 22 - 3	05 SEP 2024	LDZD AD 2.24.8 SID RNAV RWY 31 - 1	18 APR 2024
LDZA AD 2.24.8 SID RNAV RWY 22 - 4	05 SEP 2024	LDZD AD 2.24.8 SID RNAV RWY 31 - 2	18 APR 2024
LDZA AD 2.24.10 STAR RWY 04 - 1	05 SEP 2024	LDZD AD 2.24.8 SID RNAV RWY 31 - 3	18 APR 2024
LDZA AD 2.24.10 STAR RWY 04 - 2	05 SEP 2024	LDZD AD 2.24.8 SID RNAV RWY 31 - 4	18 APR 2024
LDZA AD 2.24.10 STAR RNAV RWY 04 - 1	05 SEP 2024	LDZD AD 2.24.10 STAR RWY 04 & 13/31 - 1	18 APR 2024
LDZA AD 2.24.10 STAR RNAV RWY 04 - 2	05 SEP 2024	LDZD AD 2.24.10 STAR RWY 04 & 13/31 - 2	18 APR 2024
LDZA AD 2.24.10 STAR RNAV RWY 04 - 3	05 SEP 2024	LDZD AD 2.24.10 STAR RNAV RWY 04 - 1	16 MAY 2024
LDZA AD 2.24.10 STAR RNAV RWY 04 - 4	05 SEP 2024	LDZD AD 2.24.10 STAR RNAV RWY 04 - 2	16 MAY 2024
LDZA AD 2.24.10 STAR RWY 22 - 1	05 SEP 2024	LDZD AD 2.24.10 STAR RNAV RWY 04 - 3	16 MAY 2024
LDZA AD 2.24.10 STAR RWY 22 - 2	05 SEP 2024	LDZD AD 2.24.10 STAR RNAV RWY 04 - 4	16 MAY 2024
LDZA AD 2.24.10 STAR RNAV RWY 22 - 1	05 SEP 2024	LDZD AD 2.24.10 STAR RNAV RWY 13 - 1	18 APR 2024
LDZA AD 2.24.10 STAR RNAV RWY 22 - 2	05 SEP 2024	LDZD AD 2.24.10 STAR RNAV RWY 13 - 2	18 APR 2024
LDZA AD 2.24.10 STAR RNAV RWY 22 - 3	05 SEP 2024	LDZD AD 2.24.10 STAR RNAV RWY 13 - 3	18 APR 2024
LDZA AD 2.24.10 STAR RNAV RWY 22 - 4	05 SEP 2024	LDZD AD 2.24.10 STAR RNAV RWY 13 - 4	18 APR 2024
LDZA AD 2.24.11 ATCSMAC - 1	05 SEP 2024	LDZD AD 2.24.10 STAR RNAV RWY 31 - 1	18 APR 2024
LDZA AD 2.24.11 ATCSMAC - 2	05 SEP 2024	LDZD AD 2.24.10 STAR RNAV RWY 31 - 2	18 APR 2024
LDZA AD 2.24.12 IAC L RWY 04 - 1	05 SEP 2024	LDZD AD 2.24.10 STAR RNAV RWY 31 - 3	18 APR 2024
LDZA AD 2.24.12 IAC L RWY 04 - 2	05 SEP 2024	LDZD AD 2.24.10 STAR RNAV RWY 31 - 4	18 APR 2024
LDZA AD 2.24.12 IAC ILS y or LOC y RWY 04 - 1	05 SEP 2024	LDZD AD 2.24.11 ATCSMAC - 1	18 APR 2024
LDZA AD 2.24.12 IAC ILS y or LOC y RWY 04 - 2	05 SEP 2024	LDZD AD 2.24.11 ATCSMAC - 2	18 APR 2024
LDZA AD 2.24.12 IAC ILS z or LOC z RWY 04 - 1	05 SEP 2024	LDZD AD 2.24.12 IAC VOR RWY 04 - 1	16 MAY 2024
LDZA AD 2.24.12 IAC ILS z or LOC z RWY 04 - 2	05 SEP 2024	LDZD AD 2.24.12 IAC VOR RWY 04 - 2	16 MAY 2024
LDZA AD 2.24.12 IAC L RWY 22 - 1	05 SEP 2024	LDZD AD 2.24.12 IAC Ly RWY 13 - 1	18 APR 2024
LDZA AD 2.24.12 IAC L RWY 22 - 2	05 SEP 2024	LDZD AD 2.24.12 IAC Ly RWY 13 - 2	18 APR 2024
LDZA AD 2.24.12 IAC ILS y or LOC y RWY 22 - 1	05 SEP 2024	LDZD AD 2.24.12 IAC Lz RWY 13 - 1	18 APR 2024
LDZA AD 2.24.12 IAC ILS y or LOC y RWY 22 - 2	05 SEP 2024	LDZD AD 2.24.12 IAC Lz RWY 13 - 2	18 APR 2024
LDZA AD 2.24.12 IAC ILS z or LOC z RWY 22 - 1	05 SEP 2024	LDZD AD 2.24.12 IAC VOR RWY 13 - 1	18 APR 2024
LDZA AD 2.24.12 IAC ILS z or LOC z RWY 22 - 2	05 SEP 2024	LDZD AD 2.24.12 IAC VOR RWY 13 - 2	18 APR 2024
LDZA AD 2.24.12 IAC RNP RWY 04 - 1	05 SEP 2024	LDZD AD 2.24.12 IAC ILS or LOC RWY 13 - 1	18 APR 2024
LDZA AD 2.24.12 IAC RNP RWY 04 - 2	05 SEP 2024	LDZD AD 2.24.12 IAC ILS or LOC RWY 13 - 2	18 APR 2024
LDZA AD 2.24.12 IAC RNP RWY 04 - 3	05 SEP 2024	LDZD AD 2.24.12 IAC RNP RWY 04 - 1	16 MAY 2024
LDZA AD 2.24.12 IAC RNP RWY 04 - 4	05 SEP 2024	LDZD AD 2.24.12 IAC RNP RWY 04 - 2	16 MAY 2024
LDZA AD 2.24.12 IAC RNP RWY 22 - 1	05 SEP 2024	LDZD AD 2.24.12 IAC RNP RWY 04 - 3	16 MAY 2024
LDZA AD 2.24.12 IAC RNP RWY 22 - 2	05 SEP 2024	LDZD AD 2.24.12 IAC RNP RWY 04 - 4	16 MAY 2024
LDZA AD 2.24.12 IAC RNP RWY 22 - 3	05 SEP 2024	LDZD AD 2.24.12 IAC RNP Y RWY 13 - 1	18 APR 2024
LDZA AD 2.24.12 IAC RNP RWY 22 - 4	05 SEP 2024	LDZD AD 2.24.12 IAC RNP Y RWY 13 - 2	18 APR 2024
LDZA AD 2.24.13 VOC - 1	05 SEP 2024	LDZD AD 2.24.12 IAC RNP Y RWY 13 - 3	18 APR 2024

---

Page	Date	Page	Date
LDZD AD 2.24.12 IAC RNP Y RWY 13 - 4	18 APR 2024		
LDZD AD 2.24.12 IAC RNP Z RWY 13 - 1	18 APR 2024		
LDZD AD 2.24.12 IAC RNP Z RWY 13 - 2	18 APR 2024		
LDZD AD 2.24.12 IAC RNP Z RWY 13 - 3	18 APR 2024		
LDZD AD 2.24.12 IAC RNP Z RWY 13 - 4	18 APR 2024		
LDZD AD 2.24.12 IAC RNP RWY 31 - 1	16 MAY 2024		
LDZD AD 2.24.12 IAC RNP RWY 31 - 2	16 MAY 2024		
LDZD AD 2.24.12 IAC RNP RWY 31 - 3	16 MAY 2024		
LDZD AD 2.24.12 IAC RNP RWY 31 - 4	16 MAY 2024		
LDZD AD 2.24.12 IAC L RWY 31 - 1	16 MAY 2024		
LDZD AD 2.24.12 IAC L RWY 31 - 2	16 MAY 2024		
LDZD AD 2.24.12 IAC VOR RWY 31 - 1	16 MAY 2024		
LDZD AD 2.24.12 IAC VOR RWY 31 - 2	16 MAY 2024		
LDZD AD 2.24.13 VOC - 1	18 APR 2024		
LDZD AD 2.24.13 VOC - 2	18 APR 2024		

THIS PAGE INTENTIONALLY LEFT BLANK



AIP page(s) affected	Amendment text	Introduced by AIP AMDT number:
1	2	3
ENR 6.12 - 1, LDSP AD 2.24.12. IAC NDB RWY 05 -1, LDSP AD 2.24.12 IAC ILSy or LOCy RWY 05 -1, LDSP AD 2.24.12 IAC ILSz or LOCz RWY 05 -1, LDSP AD 2.24.12 IAC RNP Y RWY 05 -1, LDSP AD 2.24.12 IAC RNP Z RWY 05 (LPV only) - 1, LDSP AD 2.24.12 IAC RNAV VISUAL RWY 23 -1, LDSB AD 2.24.12 IAC VOR-a RWY 03/21 -1	Water aerodrome "SPLIT/Resnik" withdrawn.	AIRAC AIP AMDT 009/2024 (03 OCT 2024)
ENR 6 - all charts to which it is applicable	New Heliport „LDRD - RIJEKA/Delta" added.	AIRAC AIP AMDT 009/2024 (03 OCT 2024)
LDLO AD 2.24.1 ADC -1	RWY 02/20 Strip dimensions should read 1020x140 (M). RWY 02 and RWY 20 RESA dimensions should read Length 90M, Width 60M. Type of RWY should read Instrument-non precision. RWY lighting according to AD 2.14, other lighting according to AD 2.15. RWY 02 PAPI (41ft) 3° Left.	AIRAC AIP AMDT 011/2024 (28 NOV 2024)
LDLO AD 2.24.2 APDC -1	Helicopter takeoff and landings only on RWY 02/20. Parking positions are determined by airport operator. RWY 02/20 Strip dimensions should read 1020x140 (M). RWY lighting according to AD 2.14, other lighting according to AD 2.15.	AIRAC AIP AMDT 011/2024 (28 NOV 2024)
LDRI AD 2.24.13 VOC -1	Air navigation obstacles erected within area ("RIJEKA GATEWAY (AREA)") - see AIP ENR 5.4.	AIRAC AIP AMDT 013/2024 (23 JAN 2025)
LDDU AD 2.24.1 ADC -1	Restriction should read: RWY 29 THR turn pad is forbidden to use for ACFT with wheelbase greater than 22.8m. Ref. AD 2.9.4	AIRAC AIP AMDT 001/2025 (20 FEB 2025)
LDRI - all SID/STAR/IAC/VOC charts LDPL AD 2 - all charts to which it is applicable LDZA AD 2.24.11 ATCSMAC -1 LDZD AD 2.24.11 ATCSMAC -1 ENR 6.1-1 ENR 6.3-1 ENR 6.3-3	If ATS is not AVBL, RMZ Rijeka activated within same lateral limits as CTR Rijeka, 1000 FT AGL/GND.	AIRAC AIP AMDT 003/2025 (17 APR 2025)

THIS PAGE INTENTIONALLY LEFT BLANK

---

**GEN 0.6 TABLE OF CONTENTS TO PART 1**


---

**GEN 0 1**

GEN 0.1 Preface .....	GEN 0.1 - 1
GEN 0.1.1. Name of the publishing organisation .....	GEN 0.1 - 1
GEN 0.1.2. Applicable ICAO documents .....	GEN 0.1 - 1
GEN 0.1.3. Publication media .....	GEN 0.1 - 1
GEN 0.1.4. The AIP structure and established regular amendment interval .....	GEN 0.1 - 1
GEN 0.1.5. Copyright policy .....	GEN 0.1 - 4
GEN 0.1.6. Service to contact in case of detected AIP errors or omissions .....	GEN 0.1 - 4
GEN 0.2 Record of AIP amendments .....	GEN 0.2 - 1
GEN 0.3 Record of AIP supplements .....	GEN 0.3 - 1
GEN 0.4 Checklist of AIP pages .....	GEN 0.4 - 1
GEN 0.5 List of hand amendments to the AIP .....	GEN 0.5 - 1
GEN 0.6 Table of contents to Part 1 .....	GEN 0.6 - 1

**GEN 1 National regulations and requirements 1**

GEN 1.1 Designated authorities .....	GEN 1.1 - 1
GEN 1.1.1. Civil Aviation .....	GEN 1.1 - 1
GEN 1.1.2. Meteorology .....	GEN 1.1 - 2
GEN 1.1.3. Customs .....	GEN 1.1 - 2
GEN 1.1.4. Immigration .....	GEN 1.1 - 2
GEN 1.1.5. Health .....	GEN 1.1 - 3
GEN 1.1.6. Charges .....	GEN 1.1 - 3
GEN 1.1.7. Agricultural quarantine .....	GEN 1.1 - 3
GEN 1.1.8. Aircraft accidents investigation .....	GEN 1.1 - 3
GEN 1.1.9. Military Aviation .....	GEN 1.1 - 4
GEN 1.1.10. Other designated authorities .....	GEN 1.1 - 4
GEN 1.2 Entry, transit and departure of aircraft .....	GEN 1.2 - 1
GEN 1.2.1 General provisions .....	GEN 1.2 - 1
GEN 1.2.2 Scheduled Air services .....	GEN 1.2 - 4
GEN 1.2.3 Non-scheduled Air services .....	GEN 1.2 - 5
GEN 1.2.4 Requirements for authorization of scheduled and non-scheduled air services .....	GEN 1.2 - 5
GEN 1.2.5 Non-commercial flights (flights carried out without remuneration or other valuable consideration) .....	GEN 1.2 - 6
GEN 1.2.6 Special provisions with regard to granting flight authorization to foreign state aircraft .....	GEN 1.2 - 6
GEN 1.2.7 Designated authorities and contacts .....	GEN 1.2 - 8
GEN 1.2.8 Addenda .....	GEN 1.2 - 10
GEN 1.3 Entry, transit and departure of passengers and crew .....	GEN 1.3 - 1
GEN 1.3.1 Customs requirements .....	GEN 1.3 - 1
GEN 1.3.2 Immigration requirements .....	GEN 1.3 - 3
GEN 1.3.3 Public health regulations .....	GEN 1.3 - 9
GEN 1.4 Entry, transit and departure of cargo .....	GEN 1.4 - 1
GEN 1.4.1 Plants and plant products .....	GEN 1.4 - 1
GEN 1.4.2 Veterinarian requirements .....	GEN 1.4 - 1
GEN 1.4.3 Border Sanitary Inspection .....	GEN 1.4 - 1
GEN 1.5 Aircraft instruments, equipment and flight documents .....	GEN 1.5 - 1
GEN 1.5.1 General .....	GEN 1.5 - 1
GEN 1.5.2 Equipment to be carried .....	GEN 1.5 - 1
GEN 1.5.3 Equipment to be carried on all internal and on certain flights .....	GEN 1.5 - 2
GEN 1.5.4 Reduced vertical separation minimum (RVSM) operations .....	GEN 1.5 - 3
GEN 1.5.5 Mode S procedures - display of downlinked aircraft parameters (DAP) .....	GEN 1.5 - 3
GEN 1.6 Summary of national regulations and international agreements/conventions .....	GEN 1.6 - 1
GEN 1.6.1. National regulations .....	GEN 1.6 - 1
GEN 1.6.2. International agreements/conventions .....	GEN 1.6 - 1
GEN 1.6.3. EU regulations .....	GEN 1.6 - 2
GEN 1.7 Differences from ICAO Standards, Recommended Practices and Procedures .....	GEN 1.7 - 1

GEN 1.7.1. Data not compliant with data quality requirements of Commission Implementing Regulation (EU) 2017/373 . .  
GEN 1.7 - 22

**GEN 2 Tables and codes 1**

GEN 2.1 Measuring system, aircraft markings, holidays . . . . .	GEN 2.1 - 1
GEN 2.1.1. Units of measurement . . . . .	GEN 2.1 - 1
GEN 2.1.2. Temporal reference system . . . . .	GEN 2.1 - 1
GEN 2.1.3. Horizontal reference system . . . . .	GEN 2.1 - 2
GEN 2.1.4. Vertical reference system . . . . .	GEN 2.1 - 3
GEN 2.1.5. Aircraft nationality and registration marks . . . . .	GEN 2.1 - 4
GEN 2.1.6. Public holidays . . . . .	GEN 2.1 - 4
GEN 2.2 Abbreviations used in AIS publications . . . . .	GEN 2.2 - 1
GEN 2.3 Chart symbols . . . . .	GEN 2.3 - 1
GEN 2.3.1. Aerodromes . . . . .	GEN 2.3 - 1
GEN 2.3.2. Aerodrome charts . . . . .	GEN 2.3 - 2
GEN 2.3.3. Aerodrome obstacle charts (Type A) . . . . .	GEN 2.3 - 4
GEN 2.3.4. Radio navigation aids . . . . .	GEN 2.3 - 5
GEN 2.3.5. Air Traffic Services . . . . .	GEN 2.3 - 7
GEN 2.3.6. Obstacles . . . . .	GEN 2.3 - 10
GEN 2.3.7. Miscellaneous . . . . .	GEN 2.3 - 10
GEN 2.4 Location indicators . . . . .	GEN 2.4 - 1
GEN 2.5 List of radio navigation aids . . . . .	GEN 2.5 - 1
GEN 2.6 Conversion of units of measurement . . . . .	GEN 2.6 - 1
GEN 2.7 Sunrise / Sunset . . . . .	GEN 2.7 - 1

**GEN 3 Services 1**

GEN 3.1 Aeronautical information services . . . . .	GEN 3.1 - 1
GEN 3.1.1 Responsible service . . . . .	GEN 3.1 - 1
GEN 3.1.2 Area of responsibility . . . . .	GEN 3.1 - 2
GEN 3.1.3 Aeronautical publications . . . . .	GEN 3.1 - 2
GEN 3.1.4 AIRAC System . . . . .	GEN 3.1 - 5
GEN 3.1.5 Pre-flight information services at aerodromes/heliports . . . . .	GEN 3.1 - 6
GEN 3.1.6 Digital data sets . . . . .	GEN 3.1 - 6
GEN 3.2 Aeronautical charts . . . . .	GEN 3.2 - 1
GEN 3.2.1. Responsible services . . . . .	GEN 3.2 - 1
GEN 3.2.2. Maintenance of charts . . . . .	GEN 3.2 - 1
GEN 3.2.3. Purchase arrangements . . . . .	GEN 3.2 - 1
GEN 3.2.4. Aeronautical charts series available . . . . .	GEN 3.2 - 1
GEN 3.2.5. List of aeronautical charts available . . . . .	GEN 3.2 - 4
GEN 3.2.6. Index to the World Aeronautical Chart (WAC) - ICAO 1: 1 000 000 . . . . .	GEN 3.2 - 4
GEN 3.2.7. Topographical charts . . . . .	GEN 3.2 - 4
GEN 3.2.8. Corrections to charts not contained in the AIP . . . . .	GEN 3.2 - 4
GEN 3.3 Air traffic services (ATS) . . . . .	GEN 3.3 - 1
GEN 3.3.1. Responsible service . . . . .	GEN 3.3 - 1
GEN 3.3.2. Area of responsibility . . . . .	GEN 3.3 - 2
GEN 3.3.3. Types of services . . . . .	GEN 3.3 - 2
GEN 3.3.4. Coordination between the operator and ATS . . . . .	GEN 3.3 - 3
GEN 3.3.5. Minimum flight altitude . . . . .	GEN 3.3 - 3
GEN 3.3.6. ATS units address list . . . . .	GEN 3.3 - 3
GEN 3.4 Communication services . . . . .	GEN 3.4 - 1
GEN 3.4.1. Responsible service . . . . .	GEN 3.4 - 1
GEN 3.4.2. Area of responsibility . . . . .	GEN 3.4 - 1
GEN 3.4.3. Types of services . . . . .	GEN 3.4 - 2
GEN 3.4.4. Requirements and conditions . . . . .	GEN 3.4 - 7
GEN 3.4.5. Miscellaneous . . . . .	GEN 3.4 - 8
GEN 3.5 Meteorological services . . . . .	GEN 3.5 - 1
GEN 3.5.1 Responsible service . . . . .	GEN 3.5 - 1
GEN 3.5.2 Area of responsibility . . . . .	GEN 3.5 - 1
GEN 3.5.3 Meteorological observations and reports . . . . .	GEN 3.5 - 1
GEN 3.5.4 Types of Service . . . . .	GEN 3.5 - 5

GEN 3.5.5 Notification required from operators . . . . .	GEN 3.5 - 7
GEN 3.5.6 Aircraft reports . . . . .	GEN 3.5 - 7
GEN 3.5.7 VOLMET service . . . . .	GEN 3.5 - 8
GEN 3.5.8 SIGMET and AIRMET service . . . . .	GEN 3.5 - 8
GEN 3.5.9 Other automated meteorological services . . . . .	GEN 3.5 - 10
GEN 3.6 Search and rescue (SAR) . . . . .	GEN 3.6 - 1
GEN 3.6.1 Responsible service . . . . .	GEN 3.6 - 1
GEN 3.6.2 Area of responsibility . . . . .	GEN 3.6 - 2
GEN 3.6.3 Types of services . . . . .	GEN 3.6 - 2
GEN 3.6.4 SAR agreements . . . . .	GEN 3.6 - 2
GEN 3.6.5 Conditions of availability . . . . .	GEN 3.6 - 2
GEN 3.6.6 Procedures and signals used . . . . .	GEN 3.6 - 2
<b>GEN 4 Charges for aerodromes/heliports and air navigation services (ANS) 1</b>	
GEN 4.1 Aerodrome/heliport charges . . . . .	GEN 4.1 - 1
GEN 4.1.1. Landing of aircraft . . . . .	GEN 4.1 - 1
GEN 4.1.2. Handling charges. . . . .	GEN 4.1 - 6
GEN 4.1.3. Parking, hangarage and long-term storage of aircraft . . . . .	GEN 4.1 - 15
GEN 4.1.4. Passenger service . . . . .	GEN 4.1 - 19
GEN 4.1.5. Security . . . . .	GEN 4.1 - 19
GEN 4.1.6. Noise-related items . . . . .	GEN 4.1 - 23
GEN 4.1.7. Other . . . . .	GEN 4.1 - 24
GEN 4.1.8. Exemptions and reductions . . . . .	GEN 4.1 - 28
GEN 4.1.9. Methods of payment . . . . .	GEN 4.1 - 37
GEN 4.2 Air navigation services charges . . . . .	GEN 4.2 - 1
GEN 4.2.1. Approach control . . . . .	GEN 4.2 - 1
GEN 4.2.2. ANS Route. . . . .	GEN 4.2 - 3
GEN 4.2.3. Cost basis for ANS and exemptions/reductions . . . . .	GEN 4.2 - 3
GEN 4.2.4. Methods of payment . . . . .	GEN 4.2 - 4

THIS PAGE INTENTIONALLY LEFT BLANK

**GEN 4 CHARGES FOR AERODROMES/HELIPORTS AND AIR NAVIGATION SERVICES (ANS)****GEN 4.1 AERODROME/HELIPORT CHARGES****GEN 4.1.1. LANDING OF AIRCRAFT**

Maximum permissible take-off weight allowed as specified under the regulations of the State in which the aircraft is registered.

**GEN 4.1.1.1 BRAČ/Brač I. Aerodrome**

The landing charge per tonne for general and business aviation aircraft based on their \*MTOW is as follows: for aircraft up to 4000 KG \*MTOW the charge is 11,00 EUR per tonne, while for aircraft over 4000 KG \*MTOW the charge is 16,00 EUR per tonne. Charge for passenger aircraft is 13,00 EUR per tonne.

Lighting charges:

- 25% surcharge on the price of landing.

Landing charges shall be reduced for:

- 50% for helicopters
- 25% for test flight
- 25% for return flight
- 25% for technical landing, if no change of load occurs, except fuel.

**GEN 4.1.1.2 DUBROVNIK/Rudjer Boskovic Airport**

ACFT *MTOW	Unit	EUR
up to 25 tons	Each started ton of *MTOW	9,40
over 25 tons		12,70

Charges for reversal and ferry flights and emergency landings are 50% of the basic charge.

Charges for helicopter flights are 75% of the basic charge.

Charges for test and training flights (each touch and go) are 25% of the basic charge.

Night training flights are available by prior arrangement. For training and test flights during the night the lighting is to be charged at the actual cost, according to the duration.

GEN 4.1.1.3 LOŠINJ/Lošinj I. Aerodrome

MTOW (KG)	Charge (EUR)
up to 999	27,00
1 000 - 1 999	40,00
2 000 - 3 499	133,00
3 500 - 10 000	200,00

The landing charge per ton (MTOW) for aircraft over 10 000 KG amounts 15,00 EUR.

For additional information see: GEN 4.1.8 Exemptions and reductions

GEN 4.1.1.4 OSIJEK/Klisa Airport

ACFT *MTOW	Unit	EUR
up to 5,7 tonnes	Each started tonne of MTOW	15,00
from 5,71 to 100,0 tonnes		6,40
over 100,1 tonnes		6,00

Training flights

- The runway charge for training flights shall be reduced by 75% of the landing charge.
- Special conditions may be negotiated if the number of training flights is higher than usual.
- Possible use of lighting on request, for training purposes.
- Training flights must be announced in advance and approved by Osijek Airport Ltd.
- The charge is calculated on a touch-and-go basis.

Lighting charge

ACFT *MTOW	EUR
up to 5.7 tonnes	20,00
over 5.7 tonnes	25% of the landing charge

GEN 4.1.1.5 PULA/Pula Airport

Unit of measure

Maximum take-off weight (MTOW) as indicated in the official certificate of airworthiness for the aircraft, expressed in metric tonnes. Every started tonne is calculated as a whole tonne.

The price of the service is indivisible and includes landing and take-off.

ACFT MTOW	Unit	EUR
up to 25 tonnes	Each started tonne of MTOW	8,00
over 25 tonnes		11,00

TRAINING FLIGHTS



- Night training flights are possible upon prior agreement.
- For training and trial flights during the night, the use of lighting facilities at the airfield is charged at actual cost, based on time used.
- Special conditions may be negotiated if the number of training flights is higher than usual.
- Training flights must be announced to and approved by Pula Airport Ltd. in advance.
- The charge is calculated on a touch-and-go basis.

**Service description**

- Use of the RWY for take-off and landing
- Use of taxiways BTN the RWY and the apron
- Use of facilities and installations for illuminating the RWY and taxiways
- The charge runs from the moment of landing on the RWY

**Service price**

ACFT MTOW	Unit	EUR
All ACFT	Each started tone of MTOW	2,75

**TRAINING AND TRIAL FLIGHTS**

- Night training flights are possible upon prior agreement with Pula Airport Ltd.
- For training, trial and night flights, the use of lighting facilities at the airfield is charged at actual cost, based on time used.

**GEN 4.1.1.6 RIJEKA/Krk I. Airport**

*MTOW (KG)	Charge per 1000 KG (EUR)
up to 3 000	7,00
3 001 to 25 000	11,00
over 25 000	13,00

The lighting charge is 25% of the landing charge.

**GEN 4.1.1.7 SPLIT/Saint Jerome Airport**

The price of service is indivisible and includes landing and take-off.

ACFT *MTOW	Unit	EUR
up to 4 tone	Each started ton of *MTOW	7,00
above 4 tone		8,50

**GEN 4.1.1.8 ZADAR/Zemunik Airport**

Passenger aircraft and general air traffic:

*MTOW (KG)	Charge per 1000 KG (EUR)
up to 25 000	8,30
over 25 000	11,70

Charges for test and training flights (each touch and go) are 25% of the basic charge.

For additional information see: GEN 4.1.8 Exemptions and reductions

The lighting charge is 25% of the landing charge.

Training flights must be announced in advance and approved by Zadar Airport Ltd.

**GEN 4.1.1.9 ZAGREB/Franjo Tuđman Airport - International and domestic flights**

Charges will be collected for use of the landing and take-off infrastructure and installations (including lighting).

The price of the service is composed of fixed and variable part. Fixed part is based on ACFT MTOW, and variable part is based on the total number of passengers departing from ZAGREB/Franjo Tuđman.

The fixed part of the price of the service:

ACFT *MTOW	Unit	EUR
Up to 3,0 tons	Flat fee	30,00
From 3,1 tons up to 6,0 tons	Each started ton of *MTOW	10,00
From 6,1 up to 100,0 tons		6,50
From 100,1 up to 220,0 tons		6,00
Over 220,1 tons		5,50

The variable part of the price list of the service:

Unit	EUR
Passenger on departure (adult and child)	1,85

**Training flights**

Training flight must be announced in advance and approved by Zagreb International Airport Jsc. (MZLZ d.d.).

For an increased number of training flights which differ from the usual amount, special conditions may be negotiated.

For aircraft with MTOW up to 5.7 tons the Zagreb International Airport Jsc. proposes to aircraft operators authorised by CCAA for pilot trainings in compliance with ATO-FTO (Approved training Organization) permits, conclusion of a separate contract for series of training flights for certain period, where special charge will be specified for cases when:

- aircraft (actually) lands on RWY and immediately taxis on RWY,
- aircraft only touches the RWY by wheels of landing gear and immediately takes-off (touch and go).

Training flights with aircraft whose MTOW is 5.8 tons and more is reduced by 75%.

If the training flights with aircraft whose MTOW is 5.8 tons and more are performed during the night or in low visibility conditions, when approach lighting and RWY lighting systems are requested, additional 50.00 EUR per final approach and/or landing will be charged.

**GEN 4.1.2. HANDLING CHARGES**

**GEN 4.1.2.1 BRAČ/Brač I. Aerodrome**

General aviation handling charges are following:

*MTOW (KG)	Charge (EUR)
up to 1 000	15,00
1 001 - 2 000	23,50
2 001 - 4 000	35,00
4 001 - 6 000	57,00
6 001 - 10 000	105,50
10 001 - 18 000	297,50
18 001 - 25 000	456,00
25 001 - 40 000	648,00
Above 40 001	812,00

Passenger aircraft handling charges are following:

MTOW (KG)	Charge (EUR)
4000 - 10000	280,00
10001 - 18 000	580,00
18 001 - 23 000	1.050,00
Above 23 000+	1.400,00

Centralized infrastructure - ramp handling for general and bussines aviation	
*MTOW (KG)	Charge (EUR)
0 - 4000	5,00
Above 4001	24,00

**GEN 4.1.2.2 DUBROVNIK/Rudjer Boskovic Airport**

**GEN 4.1.2.2.1 Description of service**

Handling of aircraft, passengers, baggage, cargo and mail in arrival and departure, in accordance with IATA procedure AHM 810, January 2018. Handling charges are available on request at Dubrovnik Airport (contact Airport Duty Manager, e-mail: stationmanager@airport-dubrovnik.hr, always in copy: operations@airport-dubrovnik.hr).

**GEN 4.1.2.2.2 Centralized infrastructure**

Centralized infrastructure - traffic handling	
Unit	EUR
departing passenger	2,50

Centralized infrastructure - ramp handling	
Unit	EUR
Each started ton of MTOW	2,75

**GEN 4.1.2.3 LOŠINJ/Lošinj I. Aerodrome**

The handling charge for aircraft up to 10 000 KG is free and for aircraft from 10 000 up to 20 000 KG amounts 300,00 EUR.

**GEN 4.1.2.4 OSIJEK/Klisa Airport**

Aircraft handling					
CAT	From (tonnes)	To (tonnes)	PAX handling (EUR)	Ramp handling (EUR)	Total handling (EUR)
1		1.20	6.00	8.00	14.00
2	1.21	2.00	11.00	17.00	28.00
3	2.01	3.50	22.00	28.00	50.00
4	3.51	5.70	34.00	39.00	73.00
5	5.71	10.00	42.00	50.00	92.00
6	10.01	15.00	110.00	165.00	275.00
7	15.01	25.00	160.00	230.00	390.00
8	25.01	45.00	205.00	280.00	485.00
9	45.01	65.00	275.00	415.00	690.00
10	65.01	80.00	325.00	490.00	815.00
11	80.01	120.00	385.00	575.00	960.00
12	120.01	180.00	490.00	780.00	1.270,00
13	180.01	250.00	720.00	1.250,00	1.970,00
14	>250.01		935.00	1.750,00	2.685,00

The service price for cargo ACFT is EUR 20,00 per tonne of \*MTOW and, fixed.

Centralized infrastructure		
	Unit	EUR
Charges related to passengers CIP - centralised infrastructure, traffic handling	Departing passenger	0,90
Charges related to ACFT CIR - centralised infrastructure, ramp handling	Tonne / MTOW	1,10

GEN 4.1.2.5 PULA/Pula Airport

**PASSENGER AIRCRAFT HANDLING**

**Unit of measure**

- Maximum take-off weight (MTOW) as indicated in the official certificate of airworthiness for the aircraft, expressed in metric tonnes (part of tonne is calculated as a whole tonne). Every started tonne is calculated as a whole tonne.

**Handling time**

- Duration of handling procedure at Pula Airport is regulated by the applicable standards for the relevant type of aircraft and traffic type
- Based on the business model and/or air carrier's request, it is possible to modify the handling time and technological standard for individual aircraft types with the approval of Pula Airport Ltd.

**Service price**

- The service price includes the complete passenger and aircraft handling operation during turnaround, i.e., all services specified in SGHA Annex B1 enclosed to this Price List of basis airport charges. Unit prices of services are specified in a separate part of the Price List of basic airport charges and are fixed.

Aircraft (MTOW in KG)	Traffic handling (EUR)	Ramp handling (EUR)	Total (EUR)
0 - 5 700	36,00	54,00	90,00
5 701 - 10 000	68,00	102,00	170,00
10 001 - 20 000	180,00	270,00	450,00
20 001 - 40 000	264,00	396,00	660,00
40 001 - 60 000	320,00	480,00	800,00
60 001 - 79 000	428,00	642,00	1. 070,00
79 001 - 110 000	480,00	720,00	1. 200,00
110 001 - 130 000	552,00	828,00	1. 380,00
130 001 - 155 000	696,00	1. 044,00	1. 740,00
155 001 - 200 000	912,00	1. 368,00	2. 280,00
200 001 - 270 000	1. 146,00	1. 719,00	2. 865,00
more than 270 001	1. 452,00	2. 178,00	3. 630,00

*Note:* Any further provision of services that exceeds the indicated scope and time shall be charged separately, based on the Price List of Special Request Services.

**HANDLING OF CARGO AIRCRAFT**

**Service description**

- Handling of arriving and departing aircraft, cargo and mail is carried out in accordance with IATA procedure AHM 810 – Annex A, Chapter 8 Ground Handling Agreements, 42nd Edition, 2022 (SGHA 2018), taking into consideration the local conditions.
- The list of airport services of handling aircraft, cargo and mail is included in a single handling charge for handling services provided by Pula Airport Ltd.

- Services specified in Chapter 11 Price list of basic airport services pertain to handling of cargo aircraft in the segment of services applicable to cargo aircraft, according to IATA procedure AHM, Annexes A and B1.

#### Unit of measure

- Maximum take-off weight (MTOW) as indicated in the official certificate of airworthiness for the aircraft, expressed in metric tonnes (part of tonne is calculated as a whole tonne), based on relevant classes. Every started tonne is calculated as a whole tonne.

#### Service price

- The service price includes the complete aircraft and cargo handling operation during turnaround, i.e., all services specified in the Standard Annex B enclosed to this Price List
- Cargo aircraft handling price (for aircraft carrying cargo and mail) is EUR 20,00 for every started metric tonne of the maximum take-off weight of the aircraft as indicated in the official certificate of airworthiness for the aircraft
- If an aircraft returns from the take-off point to the apron with a subsequent change of commercial load, the repeated handling shall be charged at 50% of the handling charge
- Handling charges shall be reduced by 25% if a scheduled or charter flight does not use the passenger/ baggage and/or cargo handling service at the moment of arrival or departure (ferry flight).

#### Cargo aircraft handling time

- Duration of handling procedure at Pula Airport Ltd is regulated by the applicable standards for the relevant type of aircraft and traffic type
- Based on the air carrier's request, it is possible to modify the handling time and technological standard for individual aircraft types with the approval of Pula Airport Ltd.

### HANDLING OF GENERAL AVIATION AIRCRAFT

#### Service description

- Prices of handling of general aviation aircraft apply based on the elements referred to in the previous chapters, and they are determined based on aircraft weight defined in chapter 11 of the Price list of basic airport services
- EUR 150,00 for every started hour outside the official opening hours of Pula Airport Ltd.

### TRAINING FLIGHTS

- Pula Airport provide ground handling services for training flights. For detail information please contact [commercial@airport-pula.hr](mailto:commercial@airport-pula.hr)

### CENTRALISED INFRASTRUCTURE

Centralised infrastructure - traffic handling

	Unit	EUR
Traffic handling	per departing passenger	1,20

Centralised infrastructure - ramp handling

	Unit	EUR
Ramp handling	per tonne (MTOW)	1,00

GEN 4.1.2.6 RIJEKA/Krk I. Airport

Handling charges for passenger aircraft and general air traffic are:

Passenger aircraft (MTOW in KG)	Traffic handling (EUR)	Ramp handling (EUR)	Total (EUR)
up to 3 000	6,00	8,00	14,00
3 001 - 5 000	32,00	48,00	80,00
5 001 - 10 000	101,00	152,00	253,00
10 001 - 17 000	210,00	314,00	524,00
17 001 - 24 000	292,00	438,00	730,00
24 001 - 35 000	348,00	522,00	870,00
35 001 - 60 000	400,00	601,00	1.001,00
60 001 - 70 000	429,00	645,00	1.074,00
70 001 - 90 000	470,00	706,00	1.176,00
90 001 - 150 000	561,00	841,00	1.402,00
150 001 - 180 000	738,00	1.106,00	1.844,00
180 001 - 210 000	926,00	1.388,00	2.314,00
210 001 - 260 000	1.192,00	1.789,00	2.981,00
260 001 - 320 000	1.505,00	2.258,00	3.763,00
320 001 - 350 000	1.919,00	2.878,00	4.797,00
above 350 001	2.398,00	3.596,00	5.994,00

The price includes a total aircraft handling operation during turnaround and the amount is indivisible, when charging. Additional services exceeding quoted time and quantity from the list of services shall be charged according to special facilities charges (on request).

All private and non-scheduled flights are obligated to send PPR and shall obtain a written confirmation via e-mail: [operations@rijeka-airport.hr](mailto:operations@rijeka-airport.hr) MNM 3 HR before ground handling.

In case that PPR is not sent additional handling fees are applicable:

- for aircrafts up to 4 000 KG MTOW 140,00 EUR per handling
- for aircrafts from 4 001 KG MTOW and above 270,00 EUR per handling.

The service charge for cargo aircraft is 25,00 EUR per each started metric ton on the basis of the MTOW, as indicated in the official certificate of airworthiness for the aircraft.

Centralized infrastructure - passenger handling	
Unit	EUR
Departing passenger	1,00

Centralized infrastructure - passenger handling	
Passenger aircraft (MTOW in KG)	EUR
up to 2 000	2,10



Centralized infrastructure - passenger handling	
Passenger aircraft (MTOW in KG)	EUR
2 001 - 5 000	5,70
5 001 - 10 000	12,10
10 001 - 16 000	31,20
16 001 - 24 000	55,20
24 001 - 35 000	72,20
35 001 - 60 000	82,80
60 001 - 70 000	97,60
70 001 - 90 000	117,60
90 001 - 150 000	140,02
150 001 - 180 000	184,40
180 001 - 210 000	231,40
210 001 - 260 000	298,10
260 001 - 320 000	376,30
320 001 - 350 000	479,70
above 350 001	599,40

**Note:** Centralized infrastructure charge is included in the price of ground handling services and not charged separately. In case that Rijeka/Krk I. Airport does not provide ground handling services completely, but the airport user provides them (independently performs ground handling services) centralised infrastructure charge shall be payable for ground handling services performed.

GEN 4.1.2.7 SPLIT/Saint Jerome Airport

Aircraft handling				
CAT	*MTOW (tons)	PAX handling (EUR)	RAMP handling (EUR)	Price (EUR)
1	4.1 - 10.0	36,00	53,00	89,00
2	10.1 - 16.0	125,00	188,00	313,00
3	16.1 - 21.0	181,00	272,00	453,00
4	21.1 - 30.0	232,00	347,00	579,00
5	30.1 - 40.0	278,00	417,00	695,00
6	40.1 - 60.0	316,00	473,00	789,00
7	60.1 - 79.0	376,00	563,00	939,00
8	79.1 - 100.0	453,00	679,00	1.132,00
9	100.1 - 130.0	540,00	810,00	1.350,00
10	130.1 - 155.0	710,00	1.064,00	1.774,00
11	155.1 - 200.0	892,00	1.339,00	2.231,00
12	200.1 - 270.0	1.146,00	1.720,00	2.866,00
13	iznad 270.0	1.441,00	2.161,00	3.602,00

**Handling of cargo aircraft:**

The service charge includes a total aircraft, cargo and mail handling operation during turnaround i.e. all services quoted in the Standard Annex B as an integral part of Ground Handling Price List. The price of service is 20,00 EUR per ton of \*MTOW and is indivisible.

**General air traffic handling for aircraft up to 4 tons:**

General air traffic handling is 15,00 EUR per ton of \*MTOW.

Centralized infrastructure		
	Unit	EUR
Traffic handling	Departing passenger	1,20

Ramp handling for passenger and cargo aircraft		
	Unit	EUR
Ramp handling	Ton / *MTOW	1,00

GEN 4.1.2.8 ZADAR/Zemunik Airport

Handling charges for passenger aircraft and general air traffic are as follows:

*MTOW (KG)	TRAFFIC HANDLING (EUR)	RAMP HANDLING (EUR)	Total (EUR)
up to 1 200	5,00	7,00	12,00
1 201 - 2 000	10,00	15,00	25,00
2 001 - 3 000	18,00	27,00	45,00
3 001 - 5 700	26,00	39,00	65,00

*MTOW (KG)	TRAFFIC HANDLING (EUR)	RAMP HANDLING (EUR)	Total (EUR)
5 701 - 10 000	40,00	60,00	100,00
10 001 - 16 000	120,00	180,00	300,00
16 001 - 21 000	180,00	270,00	450,00
21 001 - 30 000	240,00	360,00	600,00
30 001 - 40 000	276,00	414,00	690,00
40 001 - 60 000	313,00	470,00	783,00
60 001 - 79 000	370,00	557,00	927,00
79 001 - 100 000	442,00	663,00	1.105,00
100 001 - 130 000	528,00	792,00	1.320,00
130 001 - 155 000	700,00	1.050,00	1.750,00
155 001 - 200 000	886,00	1.329,00	2.215,00
200 001 - 270 000	1.120,00	1.680,00	2.800,00
over 270 000	1.340,00	2.010,00	3.350,00

Handling charges for cargo aircraft is 21,50 EUR per each started metric ton on the basis of \*MTOW.

Detailed information about handling of cargo aircraft are available on request.

Centralized infrastructure charge for traffic handling per departing passenger is 1,00 EUR.

Centralized infrastructure charges for ramp handling are as follows:

*MTOW (KG)	Charge (EUR)
up to 5 700	5,00
5 701 - 10 000	9,00
10 001 - 16 000	17,20
16 001 - 21 000	24,75
21 001 - 30 000	35,40
30 001 - 40 000	43,70
40 001 - 60 000	46,20
60 001 - 79 000	51,78
79 001 - 100 000	63,20
100 001 - 130 000	77,20
130 001 - 155 000	102,00
155 001 - 200 000	126,00
200 001 - 270 000	162,20
over 270 000	207,00

**GEN 4.1.2.9 ZAGREB/Franjo Tuđman Airport**

**GEN 4.1.2.9.1 Description of service**

Handling of aircraft, passengers, baggage, cargo and mail in arrival and departure, in accordance with IATA procedure AHM 810, January 2008.

Handling charges are available on request by the Ground Handling service providers at ZAGREB/Franjo Tuđman Airport“.

**GEN 4.1.2.9.2 Centralized infrastructure**

Service charge		
	Unit	EUR
Traffic handling	Departing passenger	2,50
Ramp handling for passenger and cargo aircraft on the Ramp	Ton / *MTOW	1,50

**GEN 4.1.3. PARKING, HANGARAGE AND LONG-TERM STORAGE OF AIRCRAFT****GEN 4.1.3.1 Parking of aircraft****GEN 4.1.3.1.1 BRAČ/Brač I. Aerodrome**

The first 4 HR are free of charge.

Parking charge per tonne \*MTOW / 24HR is 4,00 EUR.

**GEN 4.1.3.1.2 DUBROVNIK/Rudjer Boskovic Airport**

The first 4 hours are free of charge.

Parking charge per ton \*MTOW to 24 hours amounts to 7,00 EUR. The parking charge for helicopters is 75% of the basic parking charge.

From June 1st to September 30th, for all aircraft whose parking at the airport is not caused by a technical malfunction or any other circumstance beyond the control of the aircraft operator, the prices will be increased as follows:

- The charge is increased by 50% if the aircraft parking lasts from 24 to 48 hours, and it is applied for the entire parking period.
- The charge is increased by 100% if the aircraft parking lasts from 48 to 72 hours, and it is applied for the entire parking period.
- The charge is increased by 200% if the aircraft parking lasts over 72 hours, and it is applied for the entire parking period.

**GEN 4.1.3.1.3 LOŠINJ/Lošinj I. Aerodrome**

The first 2 hours of parking are free of charge.

Parking charge per MTOW CAT / 24HR is:

MTOW (KG)	Charge (EUR)
up to 999	11,00
1 000 - 1 999	16,00
2 000 - 3 499	23,00
3 500 - 10 000	40,00

**GEN 4.1.3.1.4 OSIJEK/Klisa Airport**

The first 4 hours of parking are free of charge.

In case of exceeding the 4 hours free-of-charge parking period, the calculation period starts from the beginning of actual block-to-block time and is calculated as a 24 hours charge. Every hour started after the period of 24 hours is taken as new 24 hours.

Unit	EUR
Each started tonne of *MTOW	3,00

**GEN 4.1.3.1.5 PULA/Pula Airport****Service price**

- Aircraft/helicopter parking lasting under two (2) hours is free of charge. In case of exceeding the 2-hour free-of-charge parking period, the calculation period starts from the beginning of actual block-to-block

time and is calculated as a 24-hour charge. Every hour started after the period of 24 hours is taken as new 24 hours

Unit of measure	EUR
Each metric tonne (MTOW) for 24 hours	3,50

- In case of technical landing, parking is free for up to two (2) hours. If the aircraft operator extends the period of parking for over two (2) hours, such parking is not considered technical landing. In that case, aircraft parking will be charged according to the official Price List, as specified in the previous paragraph under "Service price".

#### GEN 4.1.3.1.6 RIJEKA/Krk I. Airport

The first 4 hours are free of charge.

The fee is charged 8,00 EUR per ton on the basis of the MTOW for every started calendar day.

#### GEN 4.1.3.1.7 SPLIT/Saint Jerome Airport

Unit	EUR
Each started ton of *MTOW	4,00

- Aircraft parking is charged per ton of \*MTOW.
- First 2 hours are free of charge.
- The parking charge is calculated for every started period of 24 hours.
- In case of exceeding the free 2 hours of parking time the calculation period starts from the beginning of actual block-to-block time.
- In the period from 01 JUN to 30 SEP, for any aircraft uses Split Airport apron for parking for any reason but technical trouble or some other reason out of objective influence of aircraft operator, the stated prices are increased as follows:
  - The charge is 50% increased in case when an aircraft parking lasts from 24 to 48 hours and is applied for the whole parking period
  - The charge is 100% increased in case when an aircraft parking lasts from 48 to 72 hours and is applied for the whole parking period
  - The charge is 200% increased in case when an aircraft parking lasts longer than 72 hours and is applied for the whole parking period.

#### GEN 4.1.3.1.8 ZADAR/Zemunik Airport

Price of service

Unit	EUR
Each started ton of MTOW	4,00

Aircraft parking is charged per ton MTOW.

The first 4 hours are free of charge.

The charge is calculated for every started period of 24 hours.

For the period from 1st JUN to 30th SEP, for any aircraft that uses Zadar Airport Apron for parking for any reason but technical trouble or some other reason out of objective influence of aircraft operator, the stated prices are increased as follows:

- The charge is 25% increased in case when an aircraft parking lasts from 24 to 48 hours, and is applied for the whole parking period.
- The charge is 75% increased in case when an aircraft parking lasts longer than 48 hours, and is applied for the whole parking period.

#### GEN 4.1.3.1.9 ZAGREB/Franjo Tuđman Airport

##### PARKING CHARGES ON WEST APRON

- the first 4 hours are free of charge

##### PARKING CHARGES ON EAST APRON

Grace Period:

- 50 MIN for ACFT with Code letter "A", "B" ("A" wingspan up to but not including 15 M; "B" wingspan 15 M up to but not including 24 M)
- 60 MIN for ACFT with Code letter "C" (wingspan 24 M up to but not including 36 M) for long-haul flights defined in ZAG concession agreement
- 90 MIN for ACFT with Code letter "D" (wingspan 36 M up to but not including 52 M)
- 120 MIN for ACFT with Code letter "E" (wingspan 52 M up to but not including 65 M)
- 180 MIN for ACFT with Code letter "F" (wingspan from 65 M and above)

In case of exceeding the free time of parking, the calculation period starts from the beginning of actual block-to-block time.

Period of time between 2200-0600 (local time) is free of charge.

The calculation period starts from the beginning of the actual on-block-time and finishes on the actual off-block-time.

##### PARKING CHARGES ON WEST APRON

Parking charge is applied after the use of first 4 hours of parking at West Apron and is calculated according to below table in case of parking up to 3 days on the same parking stand, including first 4 hours of parking.

Unit	Period	Fee (EUR)
Per tonne or part thereof	5 MIN	0,01

If the ACFT is parked more than 3 days, the formula below applies for the calculation of the parking charge, including first 3 days of parking.

Unit	Period	Fee (EUR)
Per tonne or part thereof	Day	1,00

##### PARKING CHARGES ON EAST APRON

Parking charge is applied after "grace period" at East Apron and parking charge is according to below table from on-block time to off-block time.

Unit	Period	Fee (EUR)
Per tonne or part thereof	5 MIN	0,04

**GEN 4.1.3.2 Hangarage charges**

BRAČ/Brač I. Aerodrome - Nil.

DUBROVNIK/Rudjer Boskovic Airport - Nil.

LOŠINJ/Lošinj I. Aerodrome - Nil.

OSIJEK/Klisa Airport - Nil.

PULA/Pula Airport - Nil.

RIJEKA/Krk I. Airport - Nil.

SPLIT/Saint Jerome Airport - Nil.

ZADAR/Zemunik Airport - Nil.

ZAGREB/Franjo Tuđman Airport - Nil.

**GEN 4.1.3.3 Long-term storage**

Detailed information available at the aerodrome operator.



**GEN 4.1.4. PASSENGER SERVICE****GEN 4.1.4.1 BRAČ/Brač I. Aerodrome**

General aviation - the charge for passengers in domestic air traffic is 7,15 EUR, and for passengers in international air traffic 9,15 EUR.

Passenger aircraft - the charge for passengers (PAX service, Passenger with reduced mobility, Security Charge) in domestic air traffic is 12,00 EUR, and for passengers in international air traffic 21,00 EUR.

**GEN 4.1.4.2 DUBROVNIK/Rudjer Boskovic Airport**

Service charge		
Traffic type	Unit	EUR
International passenger service	Departing passenger	11,00
Domestic passenger service		5,00
Passenger service per transfer		5,00

**GEN 4.1.4.3 LOŠINJ/Lošinj I. Aerodrome**

MTOW (KG)	Charge (EUR)
up to 999	7,00
1 000 - 1 999	7,00
2 000 - 3 499	7,00
3 500 - 10 000	15,00

**GEN 4.1.4.4 OSIJEK/Klisa Airport**

Traffic type	Unit	EUR
International passenger service	per departing passenger	7,50
Domestic passenger service		4,00
Transfer passenger service		4,00

**GEN 4.1.4.5 PULA/Pula Airport****Service price**

- Passenger service charge per departing passenger:

Traffic type	Unit	EUR
International passenger service	per departing passenger	12,00
Domestic passenger service		5,00
Transfer passenger service		5,00
Passenger service for general aviation		12,00

- Domestic passenger service charges are paid by departing passengers travelling from Pula Airport to a destination in the Republic of Croatia
- International passenger service charges (including for passengers within the Schengen Area) are paid by departing passengers travelling from Pula Airport to a destination outside the Republic of Croatia

- Transit passenger service charges are paid by departing passengers transferring through Pula Airport.

**GEN 4.1.4.6 RIJEKA/Krk I. Airport**

The charge for passengers in domestic air traffic is 15,00 EUR per departing passenger, for passengers in international air traffic 15,00 EUR per departing passenger and for transfer passengers 15,00 EUR per departing passenger.

**GEN 4.1.4.7 SPLIT/Saint Jerome Airport**

Service charge		
Traffic type	Unit	EUR
International passenger service	Departing passenger	11,00
Domestic passenger service		5,00

**GEN 4.1.4.8 ZADAR/Zemunik Airport**

Price of service

Passenger service charge per departing passenger		
Traffic type	Unit	EUR
International passenger service	Departing passenger	10,00
Domestic passenger service		5,00

**GEN 4.1.4.9 ZAGREB/Franjo Tuđman Airport**

Passenger service per departing passenger:

Service charge		
Traffic type	Unit	EUR
International passenger service	Departing passenger	19,67
Domestic passenger service		8,43
Passenger service per transfer		4,50

## GEN 4.1.5. SECURITY

## GEN 4.1.5.1 DUBROVNIK/Rudjer Boskovic Airport

Security charge (valid from 01 JUL 2014)		
Traffic type	Unit	EUR
Commercial traffic	Departing passenger	5,80
Non Commercial traffic		5,80

## GEN 4.1.5.2 OSIJEK/Klisa Airport

Traffic type	Unit	EUR
All categories	per departing passenger	4,00

Service	Unit	EUR
X-ray check of cargo and mail	per shipment	1,45
	additionally per KG	0,03

Service	Unit	EUR
Security check (for shipments not possible to be checked by X-ray due to weight or dimensions)	per shipment	7,30

## GEN 4.1.5.3 PULA/Pula Airport

## Security charge

	Unit	EUR
All categories	per departing passenger	6,00

## Air cargo security charge

- Air cargo security charges are due by the freight forwarding agent, unless otherwise agreed upon with the air carrier

Service	Unit	EUR
X-ray check of cargo and mail	per shipment	1,50
	additionally per KG	0,05
Security check (for shipments that cannot be checked by X-ray due to their mass or dimensions)	per shipment	7,50

GEN 4.1.5.4 RIJEKA/Krk I. Airport

Security charge		
Traffic type	Unit	EUR
Commercial traffic	Departing passenger	6,00
Non Commercial traffic		6,00
Cargo traffic	Per KG	0,01

GEN 4.1.5.5 SPLIT/Saint Jerome Airport

Security charge		
Traffic type	Unit	EUR
Commercial traffic	Departing passenger	4,60
Non Commercial traffic		4,60

GEN 4.1.5.6 ZADAR/Zemunik Airport

Security charge		
Traffic type	Unit	EUR
Commercial traffic	Departing passenger	4,00
Non Commercial traffic		4,00

GEN 4.1.5.7 ZAGREB/Franjo Tuđman Airport

Passenger security charges		
Traffic type	Unit	EUR
Commercial traffic	Departing passenger	6,50
Non Commercial traffic		6,50

**Air Cargo Security Charges**

Air Cargo Security Charges are due from the freight forwarding agent, unless otherwise advised by the air carrier.

Service	Unit	EUR
X-ray check of cargo and mail	per shipment	2,703
	additionally per kg	0,041

Service	Unit	EUR
Security check for shipments not possible to be checked by X-ray due to weight or dimensions	per shipment	13,520

---

**GEN 4.1.6. NOISE-RELATED ITEMS****GEN 4.1.6.1 BRAČ/Brač I. Aerodrome**

Nil

**GEN 4.1.6.2 DUBROVNIK/Rudjer Boskovic Airport**

Nil

**GEN 4.1.6.3 LOŠINJ/Lošinj I. Aerodrome**

Nil

**GEN 4.1.6.4 OSIJEK/Klisa Airport**

Nil

**GEN 4.1.6.5 PULA/Pula Airport**

Nil

**GEN 4.1.6.6 RIJEKA/Krk I. Airport**

Nil

**GEN 4.1.6.7 SPLIT/Saint Jerome Airport**

Nil

**GEN 4.1.6.8 ZADAR/Zemunik Airport**

Nil

**GEN 4.1.6.9 ZAGREB/Franjo Tuđman Airport**

Nil

GEN 4.1.7. OTHER

GEN 4.1.7.1 BRAČ/Brač I. Aerodrome

Special services charges - on request.

GEN 4.1.7.2 DUBROVNIK/Rudjer Boskovic Airport

Charge for passengers with reduced mobility (PRM)*		
Traffic type	Unit	EUR
Commercial traffic	Departing passenger	0,35
Non Commercial traffic		0,35

\* The charge includes assistance and arrangements necessary for PRM passengers and accomodation of services available to all passengers.

Airlines Incentives Policy is available at the following link:<https://www.airport-dubrovnik.hr/en/business/incentives-policy-s63>

GEN 4.1.7.3 LOŠINJ/Lošinj I. Aerodrome

Special services charges - on request.

GEN 4.1.7.4 OSIJEK/Klisa Airport

Charge for disabled passengers and passengers with reduced mobility (PRM)		
Traffic type	Unit	EUR
Passengers on all flights	per departing passenger	0,25

Charge for upgrading the rescue and fire-fighting category above CAT 4 (during the official opening hours of OSIJEK/Klisa Airport, CAT 4 is available)		
Upgrading CAT	Unit	EUR
charge for upgrading the rescue and fire-fighting CAT from 4 to 5	Per commenced hour	50,00
charge for upgrading the rescue and fire-fighting CAT from 4 to 6	Per commenced hour	348,00
charge for upgrading the rescue and fire-fighting CAT from 4 to 7	Per commenced hour	365,00
charge for upgrading the rescue and fire-fighting CAT from 4 to 8	Per commenced hour	on request
charge for upgrading the rescue and fire-fighting CAT from 4 to 9	Per commenced hour	on request

A more detailed Regulated Airport Service Price List can be found on

URL: [www.osijek-airport.hr](http://www.osijek-airport.hr)

**GEN 4.1.7.5 PULA/Pula Airport****PRM (passenger with reduced mobility) Charge**

Unit of measure

- The PRM (passenger with reduced mobility) charge is calculated based on the number of all departing passengers per flight and it shall be calculated according to the number of passengers for whom the passenger service fee is calculated

	Unit	EUR
Passengers on all flights	per departing passenger	0,30

**GEN 4.1.7.6 RIJEKA/Krk I. Airport**

A more detailed Regulated Airport Services Price list and Price list of services on special request can be found on <http://www.rijeka-airport.hr/>. For more information on commercial details please use the following e-mail for contact: [commercial@rijeka-airport.hr](mailto:commercial@rijeka-airport.hr).

**Passenger with reduced mobility (PRM)**

Charge for passengers with reduced mobility (PRM)		
Traffic type	Unit	EUR
Commercial and non commercial traffic	Departing passenger	0,30

**Cargo infrastructure tax**

Cargo infrastructure tax (charge for usage of cargo infrastructure for cargo traffic)		
Traffic type	Unit	EUR
Cargo traffic	Outgoing cargo per kg	0,05

**Service on demand: insurance of the higher rescue and fire-fighting category**

Higher rescue and fire-fighting category		
Rescue and fire-fighting category	Unit	EUR
II-V	Per commenced hour	150,00
VI	Per commenced hour	360,00
VII	Per commenced hour	390,00
VIII-X	Per commenced hour	430,00

**GEN 4.1.7.7 SPLIT/Saint Jerome Airport**

Charge for passengers with reduced mobility (PRM)		
Traffic type	Unit	EUR
Commercial traffic	Departing passenger	0,30
Non Commercial traffic		0,30

Service charges on request are charged in accordance with the Price list of services on special request.

**GEN 4.1.7.8 ZADAR/Zemunik Airport**

Charge for passengers with reduced mobility (PRM)		
Traffic type	Unit	EUR
Commercial traffic	Departing passenger	0,25
Non Commercial traffic		0,25

Charges for special services on request are charged in accordance with the Price list of services on special request.

**GEN 4.1.7.9 ZAGREB/Franjo Tuđman Airport**

A more detailed Regulated Airport Services Price List can be found on <http://www.zagreb-airport.hr/>.

For more information on commercial details please contact:

Email: [commercial@zag.aero](mailto:commercial@zag.aero)

**Passenger with reduced mobility (PRM)**

Service	Unit	EUR
Commercial traffic	Departing passenger	0,45
General aviation		0,45

**Charges for passengers with reduced mobility (PRM) are due from the air carrier.**

**Miscellaneous Services: Access to the Security restricted area**

Service	EUR
Airport identification card for unescorted person	48,38 + VAT
Airport identification card for unescorted vehicle	41,14 + VAT

**Incentive Program:**

- The incentives granted shall be calculated in accordance with the following table:

Year-round Scheduled New Destination Incentive (Incentive Model I)			
Fees	Period		
	1st year	2nd year	3rd year
Landing Fee	100%	50%	25%
Passenger Service Charge	40%	20%	10%

- The incentives granted shall be calculated in accordance with the following table:

Year-round Frequency Increase on Existing Destination (Incentive Model II)		
Fees	Period	
	1st year	2nd year



<b>Year-round Frequency Increase on Existing Destination (Incentive Model II)</b>		
Landing Fee	50%	25%
Passenger Service Charge	10%	5%

- The incentives granted shall be calculated in accordance with the following table:

<b>Seasonal Scheduled New Destination (Incentive Model III)</b>	
Fees	Period
	12 months
Landing Fee	100%

- The incentives granted shall be calculated in accordance with the following table:

<b>New Charter Destination (Incentive Model IV)</b>	
Fees	Period
	12 months
Landing Fee	50%

- The incentives granted shall be calculated in accordance with the following table:

<b>Seasonal to Year-round Incentives (Incentive Model V)</b>	
Fees	Period
	12 months
Landing Fee	100%
Passenger Service Charge	10%

- The incentives granted shall be calculated in accordance with the following table:

<b>Supplementary Long-houl Incentives (Incentive Model VI)</b>	
Fees	Period
	Valid through the applied Incentive Model I-V
Passenger Service Charge	30%

- The incentives granted shall be calculated in accordance with the following table:

<b>Supplementary Based Aircraft Incentives (Incentive Model VII)</b>	
Fees	Period
	Valid through the applied Incentive Model I-V
Centralized Infrastructure - Terminal	100%
Centralized Infrastructure - Ramp	100%

**GEN 4.1.7.9.1 Services on special request**

Additional use of the Rescue and firefighting service in case of alternation, engine testing and refuelling with passengers on board, or during embarking/disembarking:

Service	Period	Fee (EUR)
Use of the firefighting vehicle	30 MIN	50,00

**GEN 4.1.8. EXEMPTIONS AND REDUCTIONS**

**GEN 4.1.8.1 Exemptions**

**GEN 4.1.8.1.1 BRAČ/Brač I. Aerodrome**

Exempted from charges are:

- Infants up to the age of two
- passengers holding free tickets (ID90, ID00)
- Aircraft crew
- Brač Aerodrome personnel

Croatian military aircraft when flying for military purposes and the Red Cross aircraft of the Republic of Croatia shall be exempt from the payment of charges.

Should an aircraft return from take off point to the apron, handling shall not be charged provided no change of load occurs.

**GEN 4.1.8.1.2 DUBROVNIK/Rudjer Boskovic Airport**

Exempted from charges are:

- children up to 2 years of age (infants)
- passengers holding free ticket (ID 00)
- direct transit passengers
- crew (DHC)

The following categories shall be exempt from airport charges:

- a. aircraft involved in search and rescue operations
- b. aircraft used for humanitarian assistance in case of a natural disaster or state of emergency
- c. aircraft in distress
- d. state aircraft which provide emergency medical aid
- e. state aircraft which perform fire fighting protection
- f. state aircraft which perform special activity flig
- g. Croatian military aircraft when flying for military purposes, Croatian Ministry of Interior aircraft and Republic of Croatia Red Cross aircraft

**GEN 4.1.8.1.3 LOŠINJ/Lošinj I. Aerodrome**

Exempted from charges are (for general air traffic):

- infants up to the age of two
- aircraft pilots
- panoramic flights passengers
- taxi flights passengers
- medical flights passengers
- Airport Mali Lošinj Ltd. personnel

Exempted from paying aerodrome charges are Croatian military aircraft and aircraft invited by Aerodrome Mali Lošinj Ltd.

#### GEN 4.1.8.1.4 OSIJEK/Klisa Airport

Passenger service charges are not paid by the following categories of passengers:

- children up to 2 years of age (infants)
- ID00
- transit passengers
- crew (DHC)

The following categories shall be exempted from airport charges:

- a. aircraft involved in search and rescue operations,
- b. aircraft used for humanitarian assistance in case of a natural disaster or state of emergency,
- c. aircraft in distress,
- d. state aircraft which provide emergency medical aid,
- e. state aircraft providing fire fighting protection flights,
- f. state aircraft providing special activity flights.

#### GEN 4.1.8.1.5 PULA/Pula Airport

##### Exemptions

The passenger service charge, the aviation security charge and PRM charge are not paid by the following categories of passengers:

- children under the age of two,
- passengers in direct transit and
- crew (DHC)

The following categories are exempt from AD charges imposed by Pula Airport Ltd.:

- a. ACFT involved in SAR operations,
- b. ACFT used for humanitarian assistance in case of a natural disaster or state of emergency,
- c. ACFT in distress,
- d. state ACFT which provide emergency medical aid,

- e. state ACFT providing fire fighting protection flights,
- f. state ACFT providing special activity flights,
- g. Croatian military ACFT when flying for MIL purposes and Croatian Ministry of Interior's ACFT.

Should an aircraft return from the take-off point to the apron, handling shall not be charged, provided that no change of load occurs (passengers, baggage, cargo or mail).

#### GEN 4.1.8.1.6 RIJEKA/Krk I. Airport

Passenger service charges are not paid by the following categories of passengers:

- children up to 2 years of age (infants)
- passengers holding free ticket (ID00)
- direct transit passengers
- crew (DHC)
- Rijeka/Krk I. Airport employees

The following categories shall be exempt from airport charges:

- a. aircraft involved in search and rescue operations
- b. aircraft used for humanitarian assistance in case of a natural disaster or state of emergency
- c. aircraft in distress
- d. state aircraft which provide emergency medical aid
- e. state aircraft providing fire fighting protection
- f. state aircraft providing special activity flights
- g. Croatian military aircraft when flying for military purposes, Croatian Ministry of Interior's aircraft and Republic of Croatia Red Cross aircraft shall be exempt from the payment of charges

#### GEN 4.1.8.1.7 SPLIT/Saint Jerome Airport

Passenger service charges are not paid by the following categories of passengers:

- children up to 2 years of age (infants)
- ID00 (Split Airport Ltd. approval required)
- transit passengers
- crew (DHC)

The following categories shall be exempt from the payment of handling charges:

- a. aircraft involved in search and rescue operations
- b. aircraft used for humanitarian assistance in case of a natural disaster or state of emergency
- c. state aircraft which provide emergency medical aid
- d. state aircraft which perform fire fighting protection
- e. state aircraft which perform special activity flights

- f. Croatian military aircraft when flying for military purposes and Republic of Croatia Red Cross aircraft .

Should an aircraft return from the take-off point to the apron, handling shall not be charged provided no change of load occurs (passengers, baggage, cargo, mail).

#### **GEN 4.1.8.1.8 ZADAR/Zemunik Airport**

Should an aircraft return from take off point to the apron, handling shall not be charged provided no change of load occurs.

Passenger service charges are not paid by the following categories of passengers:

- children up to 2 years of age (infants)
- ID00
- DHC (Dead Head Crew)
- Transit passengers

The following categories shall be exempt from airport charges:

- a. aircraft involved in search and rescue operations
- b. aircraft used for humanitarian assistance in case of a natural disaster or state of emergency
- c. aircraft in distress
- d. state aircraft which provide emergency medical aid
- e. state aircraft which perform fire fighting protection
- f. state aircraft which perform special activity flights
- g. Croatian military aircraft when flying for military purposes and Republic of Croatia Red Cross aircraft shall be exempt from the payment of charges.

#### **GEN 4.1.8.1.9 ZAGREB/Franjo Tuđman Airport**

Passenger service charges are not paid by the following categories of passengers:

- children up to 2 years of age (infants)
- transit passengers

The following shall be exempt from airport and user charges:

- a. aircraft involved in search and rescue operations;
- b. aircraft used for humanitarian assistance in case of a natural disaster or state of emergency;
- c. aircraft in distress;
- d. state aircraft which provide emergency medical aid;
- e. state aircraft which perform fire fighting protection;
- f. state aircraft which perform special activity flights;

#### **GEN 4.1.8.2 Reductions**

##### **GEN 4.1.8.2.1 BRAČ/Brač I. Aerodrome**

Landing and take-off charges for crew personnel training purpose (touch and go) shall be reduced for 25%.

Handling charges for crew personnel training purpose shall be reduced for 75%.

Landing and take-off charges shall be reduced for:

- 25% for technical landing, if no change of load occurs, except fuel
- 50% for helicopters

Landing and take-off charges, as well as handling charges shall be reduced for:

- 25% for test flight (only Landing)
- 25% for return flight

Handling charges shall be reduced for:

- 25% for ferry flight (empty leg)

Reduction of one provision excludes using any other provision at the same time.

#### GEN 4.1.8.2.2 DUBROVNIK/Rudjer Boskovic Airport

Charges for reversal and ferry flights and emergency landings are 50% of the basic Landing charge.

Charges for helicopter flights are 75% of the basic Landing charge.

Charges for test and training flights (each touch and go) are 25% of the basic Landing charge.

Charges for basic airport services for the Republic of Croatia government aircraft are 50% of the charges stated.

#### GEN 4.1.8.2.3 LOŠINJ/Lošinj I. Aerodrome

A discount of up to 25% on the **landing** fee can be approved for organized group arrivals (5 or more aircrafts).

A discount of up to 25% on **parking** fee can be approved for business partners aircraft, owners of aircraft with permanent address in Lošinj, owners of aircraft with regular arrivals to the airport (two times a week or more).

Charges for reversal, test and emergency flights are 50% of the basic charge.

Charges for technical flights with turnaround time under 1 hour are 25% of basic landing charge within their MTOW category.

Discounts on charges for training flights can be approved only for pilot schools registered in the Republic of Croatia.

The landing charge for helicopters is 25% of the basic charge for landing within their MTOW category.

Discounts can be approved only for landing and parking.

Discounts do not apply for commercial landing.

#### GEN 4.1.8.2.4 OSIJEK/Klisa Airport

Runway charge shall be reduced by 25% in case of:

- return flights
- trial flights
- technical landing
- helicopter landing

The handling charge shall be reduced by 50% in case of:

- technical landing, if no change of load occurs, except fuel;
- air ambulance flight;

- training flights
- trial flights;

If an aircraft returns from the take-off position to the apron and a subsequent change of commercial load occurs, the repeated handling shall be charged in the amount of 75% of the handling charge.

The handling charge shall be reduced by 25% if a scheduled or a charter flight does not use the passenger, cargo, and/or goods handling service at the moment of arrival or departure (ferry flight).

#### GEN 4.1.8.2.5 PULA/Pula Airport

##### Price reduction

Landing charge will be reduced by the following percentages in the following cases:

- 50% for technical landings and emergency landings

##### Price reduction for basic airport services for passenger aircraft (handling charge):

- Handling charge shall be decreased by:
  - 25% in case of inbound or outbound ferry flight
  - 75% in case of positioning or trial flight
  - 50% in case of technical landing
  - 50% of the price for air ambulance flights

##### Price reduction for basic airport services for cargo aircraft:

- Handling charges for cargo aircraft shall be reduced by the following percentages in the following cases:
  - 25% in case of arriving or departing ferry flight
  - 75% in case of positioning or trial flight
  - 50% in case of technical landing

#### GEN 4.1.8.2.6 RIJEKA/Krk I. Airport

Landing charges shall be reduced by:

- 75% for test and training flights (each touch and go, and approach in conditions of controlled airport counts)
- 50% for technical landings and emergency flights

Handling charges shall be reduced by:

- 75% for test and training flights
- 50% for technical landings and emergency flights

Reduction for one provision excludes using any other at the same time.

#### GEN 4.1.8.2.7 SPLIT/Saint Jerome Airport

Charges for use of the runway shall be reduced by 25% in cases of a:

- return flight
- test flight
- technical landing

Landing charges for the purpose of training flights are reduced by 75% from the amount defined in this Price list. Training flight must be announced in advance and approved by Split Airport Ltd.

Handling charges shall be reduced by 50% in case of:

- technical landing, if no change of load occurs
- ambulance flight
- trial flight
- training flight

Handling charges shall be reduced by 25% in case when passenger aircraft in scheduled or charter traffic, arriving or departing, does not use the service of loading or unloading (Ferry flight).

#### **GEN 4.1.8.2.8 ZADAR/Zemunik Airport**

Charges for use of the RWY shall be reduced by 25% in cases of:

- reversal flight,
- test flight,
- technical landing,
- emergency landing.

Handling charges shall be reduced by 50% in case of:

- technical landing, if no change of load occurs.

If an aircraft returns from the take-off position to the apron and a change of load occurs, the repeated handling shall be charged in the amount of 75% of the handling charge.

Handling charges shall be reduced by 25% in case when passenger aircraft in scheduled or charter traffic, arriving or departing, does not use the service of loading or unloading (Ferry flight).

#### **GEN 4.1.8.2.9 ZAGREB/Franjo Tuđman Airport**

Charges for use of the runway shall be reduced by 25% in case of a:

- return flight
- trial flight
- technical landing

#### **GEN 4.1.8.3 Surcharges**

##### **GEN 4.1.8.3.1 BRAČ/Brač I. Aerodrome**

Handling charges shall be increased by 25% in cases of:

- night handling (from SS till SR)
- handling on Croatian national holidays
- repeated part or complete handling service, upon user request

Take off, landing and handling charges out of operating hours on request:

For all aircraft up to 5700 KG of \*MTOW, the charge is 120,00 EUR per hour; for aircraft between 5701 \*MTOW and 20000 KG \*MTOW, it's 250,00 EUR per hour; and for aircraft over 20000 KG \*MTOW, the charge is 350,00 EUR per hour.



**GEN 4.1.8.3.2 DUBROVNIK/Rudjer Boskovic Airport**

Waiting on request charge is 300 EUR for operating out of airport working hours per each commenced hour. Four (4) hours is the maximum to be charged i.e. from 2100 – 0100 (2100 - 0100) counting in advance and from 0500 – 0100 (0400- 0000) counting backwards.

**GEN 4.1.8.3.3 LOŠINJ/Lošinj I. Aerodrome**

The take-off / landing charge shall be increased by 25% for:

- night take-off / landing (from SS till SR)
- take-off / landing on national holidays of the Republic of Croatia

Aircraft waiting time (time of up to two hours before or after official end of Lošinj Aerodrome opening hours) is 120,00 EUR per hour per flight.

Opening the airport outside opening hours and waiting time outside of regular opening hours is 250,00 EUR per hour per flight.

*Note:* Cancelling an aircraft operation outside of regular opening hours of Lošinj Aerodrome within 12 hours before the scheduled take-off/landing time is charged at a rate equal to 100% of the total price agreed.

Cancellations made outside of regular opening hours of Lošinj Aerodrome within 12-24 hours before the scheduled flight are charged at a rate equal to 50% of the total price agreed.

**GEN 4.1.8.3.4 OSIJEK/Klisa Airport**

The handling charge shall be increased by 25%:

- on Sundays and national holidays of the Republic of Croatia
- for night handling between 2100-0500 (2000-0400)
- outside OSIJEK/Klisa Airport HR SER
- for repeated loading/unloading caused by Carrier's error

Opening the airport outside of regular opening hours and waiting on request:

- Opening the airport outside of official opening hours and waiting time outside of regular opening hours is subject to additional charges.
- Aircraft waiting time is defined as a period of time of up to two hours after the official end of Osijek Airport opening hours, in accordance with the Ordinance on Airport Opening Hours. The minimum unit of time for charging waiting time outside of regular airport opening hours is 30 minutes.
- Opening of Osijek Airport is defined as a period of time preceding the official airport opening hours and a period of time after the maximum aircraft waiting time (over two hours after the official opening hours)
- The charge for opening the airport outside of official opening hours and for waiting outside of regular opening hours does not include the landing charge, lighting charge and handling charge.

Opening of airport outside regular opening hours	Unit	EUR
per flight	per hour	350,00

Aircraft waiting time outside regular opening hours	Unit	EUR
per flight	30 MIN	180,00

**Note:**

- Cancelling an aircraft operation outside of regular opening hours of OSIJEK/Klisa Airport within 12 hours before the scheduled take-off/landing time is charged at a rate equal to 100% of the total price agreed. In addition to the charge for opening the airport specified above, Osijek Airport Ltd. will also charge the air carrier the full amount of the landing, handling and centralised infrastructure charge.
- Cancellations made outside of regular opening hours of Osijek Airport within 12-24 hours before the scheduled flight are charged at a rate equal to 50% of the total price agreed. In addition to the charge for opening the airport specified above, Osijek Airport Ltd. will also charge the air carrier 50% of the landing, handling and centralised infrastructure charge.
- The charge will not apply to an aircraft for which the airport was requested to be opened or waiting was required in the event of severe weather or deteriorating technical conditions at the airport due to which the aircraft is unable to land/take off.

**GEN 4.1.8.3.5 PULA/Pula Airport**

**Price increase for basic airport services for passenger aircraft**

- Handling charge shall be increased by:
  - 50% in case of handling operations performed at night from 2100 - 0500 (2000 - 0400)
  - 50% for services performed outside of opening hours of Pula Airport Ltd.
  - 25% in case of loading/unloading caused by the air carrier's error
  - 50% in case of handling operations performed on national holidays

Increases shall be applied to the contracted handling price

**Cancelled flights**

For all flights cancelled within less than 24 hours of the scheduled landing/take-off, a fee of 100% of the total handling price shall be charged

**Price increase for basic airport services for cargo aircraft**

- Handling charge shall be increased by:
  - 50% in case of handling operations performed at night from 2100 - 0500 (2000 - 0400)
  - 50% for services performed outside of opening hours of Pula Airport Ltd.
  - 50% for reloading/unloading caused by the air carrier's error
  - 50% in case of handling operations performed on Sundays and national holidays in the Republic of Croatia
- Increases shall be applied to the contracted handling price.

**GEN 4.1.8.3.6 RIJEKA/Krk I. Airport**

Handling charges shall be increased by:

- 25% for night handling (30 MIN upon official sunset and thirty minutes prior to the official sunrise, minimum from 2200 until 0600 LT)
- 25% for repeated loading/unloading caused by Carrier's error
- 25% for handling during state holidays
- 50,00 EUR for aircraft up to 3 000 KG MTOW (rescue and fire-fighting category III), 190,00 EUR for aircraft over 3 001 KG MTOW (rescue and fire-fighting category IV), 290,00 EUR for aircraft up to 49 000 KG MTOW (rescue and fire-fighting category V and VI) and 490,000 EUR for aircraft over 49 001 KG MTOW (rescue and fire-fighting category VI, VII, VIII, IX and X) for handling outside AD HR SER per each commenced hour. Minimum calculation unit is 1 hour on working days for extension or early opening, and 3 hours during night and in case of non-working days. In case when Rijeka airport is not extending opening hours, but has to be reopened for handling and landing minimum calculation unit is

3 hours. Only 1 hour of service out of official operating hours, will be charged in case that Rijeka Airport has to open on non-working days for aircraft up to 3 tonnes MTOW without AOC (Air Operator Certificate) and which makes maximum 2 operations during 50 minutes.

In case of confirmed flight cancellation or diversion of aircraft which is not caused by force majeure, if notice is given less than 24 hours before planned arrival/departure, a charge of 50% of the standard handling charges is made for passenger handling and service provided at the airport of the scheduled departure.

In case of confirmed flight cancellation or diversion of aircraft which is not caused by force majeure, if notice is given less than 12 hours before planned arrival/departure, a charge of 100% of the standard handling charges is made for passenger handling and service provided at the airport of the scheduled departure.

In case of confirmed flight cancellation or diversion of aircraft which is not caused by force majeure, with planned arrival/departure out of official operating hours, if notice is given less than 12 hours before planned arrival/departure, a charge for service out of official operating hours in accordance with point 4.3.2. of Price list of airport regulated charges will also be charged.

#### GEN 4.1.8.3.7 SPLIT/Saint Jerome Airport

When waiting for aircraft outside AD HR SER a fee shall be charged. Minimal unit rate is 30 minutes and the maximum number of waiting hours which can be charged is 8 (eight).

Traffic type	Unit	EUR
Commercial traffic	per hour	230,00
Non Commercial traffic		230,00

Handling charges shall be increased by 25% in case of:

- days of national holidays of the Republic of Croatia
- night handling between 2100-0500 (2000-0400)

#### GEN 4.1.8.3.8 ZADAR/Zemunik Airport

Handling charges shall be increased for:

- 25% for night handling, from 2100 - 0500 (2000 - 0400)
- 25% for reloading caused by carrier's error
- 25% for handling during Sundays and national holidays
- 250,00 EUR for handling outside Zadar Airport opening hours, per each hour. 4 HR is the maximum to be charged.
- 200,00 EUR for all arriving flights without approved PPR.

#### GEN 4.1.8.3.9 ZAGREB/Franjo Tuđman Airport

Nil

#### GEN 4.1.8.4 Cargo

See 2. Handling charges

#### GEN 4.1.9. METHODS OF PAYMENT

##### GEN 4.1.9.1 BRAČ/Brač I. Aerodrome

Invoicing and charges collection from the services in air traffic is made in accordance with signed contracts or immediately prior to take-off in cash or credit cards (Visa, Diners and Master card).

**GEN 4.1.9.2 DUBROVNIK/Rudjer Boskovic Airport**

Calculation and charge of services rendered to regular air carriers are performed in accordance with signed contracts. The air carriers, who did not sign a contract with Dubrovnik Airport Ltd. for providing airport services, shall pay for rendered services prior to take off. Charge of services provided to air carriers from item shall be performed in debit or credit cards officially accepted by Dubrovnik Airport Ltd.

**GEN 4.1.9.3 LOŠINJ/Lošinj I. Aerodrome**

Invoicing and charges are made in accordance with signed contracts or immediately prior to take-off in cash or credit cards (Visa, Diners, Maestro and Mastercard).

Prices do not include V.A.T.

**GEN 4.1.9.4 OSIJEK/Klisa Airport**

Air carriers who do not have a contract with Osijek Airport Ltd., shall pay for rendered services prior to take-off.

Charge of services rendered to air carriers shall be performed as follows:

- in cash
- transaction account
- American Express
- Diners
- Maestro
- Master Card
- VISA

Value Added Tax (VAT) is not included in the listed prices.

**GEN 4.1.9.5 PULA/Pula Airport**

Nil

**GEN 4.1.9.6 RIJEKA/Krk I. Airport**

The calculation and invoicing of airport services to the carriers are to be made in accordance with the company's business policy. Calculation and charge of services, the user shall pay for rendered services prior to take-off. Charge of services shall be performed as follows:

- in cash
- credit and debit cards
- by transaction on the account according to sent preliminary invoice.

For advanced payments Rijeka Airport Management can approve extra discount up to 20% on total amount of demanded services.

Rijeka Airport Management can approve user's written demand for payment after take-off according invoice with due date no longer than 30 days.

Users, who have a contract with Rijeka/Krk I. Airport, shall pay for rendered services in accordance with signed contracts.

Value Added Tax (VAT) is not included in the Price List. Air carriers that are not exempt from payment of VAT in accordance with Respective rules and regulations, will be charged at VAT rate prescribed by law.

Rijeka/Krk I. Airport has right to inspect Air Operator Certificate (AOC) in order to determine for which type of transport is the air carrier registered.

Calculation and charge of rendered services can be performed in any currency in the following way: the price quoted in EUR is to be calculated into preferred currency in accordance with the invoice issuance.

For delayed payments, interest will be added to the debtor in accordance with the law. All disputes between the users of airport services and the Rijeka Airport regarding charges and changes of the Tariff and General Business Conditions will be submitted to the court in Rijeka.

Rijeka/Krk I. Airport may require payment security instrument from the user of services.

Special services rendered to aircraft shall be charged to air carrier in accordance with prices from Price list of services on special request.

#### **GEN 4.1.9.7 SPLIT/Saint Jerome Airport**

Calculation and charge of services rendered to regular air carriers are performed in accordance with signed contracts.

Air carriers who do not have a contract with Split Airport Ltd., shall pay for rendered services prior to take-off

Charge of services rendered to air carriers shall be performed as follows:

- in cash
- Diners
- Master Card
- VISA.

Value Added Tax (VAT) is not included in prices quoted in the Price List.

Air carriers that are not exempt from payment of Value Added Tax (VAT) in accordance with respective rules and regulations will be charged at VAT rate prescribed by law.

Calculation and charge of rendered services can be performed in any hard currency in the following way: the prices quoted in EUR are to be converted into preferred currency in accordance with the official exchange rate of Croatian National Bank (Hrvatska narodna banka) on the date of the invoice issuance.

Calculation and charge of rendered services to Air Carriers with non-resident status shall be determined by Annex B.

#### **GEN 4.1.9.8 ZADAR/Zemunik Airport**

Invoicing and collection of the charges for services provided to scheduled airlines is made in accordance with signed contracts.

Charges for services rendered to non-scheduled carriers are collected, prior to take off:

- in cash
- Diners
- Master Card
- VISA
- Air Routing
- Multiservice credit card

#### **GEN 4.1.9.9 ZAGREB/Franjo Tuđman Airport**

Invoicing charges collection of the services rendered to scheduled airlines is made in accordance with signed contracts.

Services rendered to non-scheduled carriers are collected prior to take-off:

- in cash
- American Express
- Master Card
- Diners
- VISA
- AIR ROUTING
- Multiservice
- cheques (Captain's, Traveller's, Euro)

Value Added Tax (VAT) will be calculated in accordance with VAT Law and Ordinance on Value Added Tax in effect.

Calculation and collection of used facilities and services rendered may be executed in EUR.

For delays in payment of used facilities and services rendered the debtor will be charged legal interest, in accordance with maximum interest rate ruled by valid national legal act.

Zagreb International Airport Jsc. has right to request payment security instrument from the user of airport facilities and services based on traffic forecast (announced by service user) and anticipated risk (by Zagreb International Airport Jsc.). In case of any disputes between users of airport facilities and services and Zagreb International Airport Jsc. with reference to interpretation and practical implementation of this Price List of Airport Regulated Charges - the court in Zagreb will be competent.

In case of an emergency event, all special facilities and services provided by Zagreb International Airport Jsc. to aircraft operator will be calculated on the basis of actual costs increased by 10% of manipulative costs.

Throughout the concession period Zagreb International Airport Jsc. retains the right to adjust the Price List of Airport Regulated Charges based on **inflation/deflation** in accordance with articles 6.5 and 6.9 of the Concession Agreement relating to the Construction and Operation of the ZAGREB/Franjo Tuđman Airport between the Republic of Croatia and ZAIC A-Limited as of 11 April 2012.

Designation	Type of obstacle	Coordinates	ELEV/HGT GND	OBST LGT Type/Colour
1	2	3	4	5
VA12 (VE ZD3P)	WINDMILL	440422N 0154542E	2334FT / 589FT	MEDIUM- INTENSITY TYPE B/RED LOW-INTENSITY TYPE B/RED
VA13 (VE ZD3P)	WINDMILL	440355N 0154642E	2073FT / 589FT	MEDIUM- INTENSITY TYPE B/RED LOW-INTENSITY TYPE B/RED
VA14 (VE ZD3P)	WINDMILL	440408N 0154714E	1969FT / 589FT	MEDIUM- INTENSITY TYPE B/RED LOW-INTENSITY TYPE B/RED
VA15 (VE ZD3P)	WINDMILL	440331N 0154801E	2153FT / 589FT	MEDIUM- INTENSITY TYPE B/RED LOW-INTENSITY TYPE B/RED
VA21 (VE ZD3P)	WINDMILL	440432N 0154539E	2314FT / 589FT	MEDIUM- INTENSITY TYPE B/RED LOW-INTENSITY TYPE B/RED
VA22 (VE ZD3P)	WINDMILL	440329N 0154717E	1930FT / 589FT	MEDIUM- INTENSITY TYPE B/RED LOW-INTENSITY TYPE B/RED
VA23 (VE ZD3P)	WINDMILL	440336N 0154701E	2002FT / 589FT	MEDIUM- INTENSITY TYPE B/RED LOW-INTENSITY TYPE B/RED
VA25 (VE ZD3P)	WINDMILL	440349N 0154806E	1984FT / 589FT	MEDIUM- INTENSITY TYPE B/RED LOW-INTENSITY TYPE B/RED
VA26 (VE ZD3P)	WINDMILL	440308N 0154825E	2096FT / 589FT	MEDIUM- INTENSITY TYPE B/RED LOW-INTENSITY TYPE B/RED

Designation	Type of obstacle	Coordinates	ELEV/HGT GND	OBST LGT Type/Colour
1	2	3	4	5
VE MAZIN 2 (WINDMILL FARM)  VA1 VA2 VA3 VA4 VA5 VA6 VA7	WINDMILL	442505N 0155029E- 442458N 0155052E- 442446N 0155121E- 442438N 0155133E- 442431N 0155206E- 442429N 0155233E- 442429N 0155251E	3543FT / 492FT 3504FT / 492FT 3338FT / 492FT 3468FT / 492FT 3374FT / 492FT 3355FT / 492FT 3512FT / 492FT	HIGH - INTENSITY TYPE B/White
VE VISOKA (WINDMILL FARM)  VA1 VA2 VA3 VA4 VA5 VA6 VA7 VA8	WINDMILL	434011N 0163720E- 434033N 0163654E- 434057N 0163440E- 434102N 0163520E- 434058N 0163606E- 434044N 0163645E- 434022N 0163704E- 434100N 0163454E	2899FT / 639FT 3151FT / 639FT 3320FT / 639FT 3447FT / 639FT 3531FT / 639FT 3297FT / 639FT 3048FT / 639FT 3444FT / 639FT	HIGH - INTENSITY TYPE B/White
ZADAR 1200 STUP 2	ANTENNA MAST	441352N 0151415E	529FT / 447FT	NIL/RED



**LDPL AD 2.5 PASSENGER FACILITIES**

1	Hotels	In the city.
2	Restaurants	In the city.
3	Transportation possibilities	Bus, taxi, rent a car at AD.
4	Medical facilities	First aid at AD. Hospitals in the city.
5	Bank and Post Office	In the city.
6	Tourist Office	In the city.
7	Remarks	NIL

**LDPL AD 2.6 RESCUE AND FIRE FIGHTING SERVICES**

1	AD category for fire fighting	CAT 9 See Remarks
2	Rescue equipment	3 Heavy fire fighting vehicles (12 000 L water, foam 1 500 L, powder 250 KG) 1 Heavy fire fighting vehicle (9 000 L water, foam 1 000 L)
3	Capability for removal of disabled aircraft	<p>Airport Duty Manager working hours: 0400 - 2000 UTC during Summer season. Upon NOTAM during Winter season.</p> <p>Phone: +385 52 530 108 Fax: +385 52 550 925 Email: operations@airport-pula.hr</p> <p>1 towing tractor - SCHOPF up to MTOW 420 000 KG. Towbars: A300, A310, A318, A319, A320, A321, B737, B747, B757, B767, DHC-7, DHC-8, ATR42, ATR72. On request by external company: 1 self-propelled crane up to 30 000 KG 1 self-propelled crane up to 40 000 KG 1 self-propelled crane up to 50 000 KG 1 self-propelled crane up to 70 000 KG 1 self-propelled crane up to 90 000 KG 1 self-propelled crane up to 100 000 KG 1 self-propelled crane up to 160 000 KG 1 self-propelled crane up to 230 000 KG 1 self-propelled crane up to 300 000 KG 1 truck crane up to 25 000 KG 2 truck crane up to 32 000 KG Capability for removal of heaviest disabled aircraft: B744</p>

4	Remarks	<p>During Winter season: CAT 5</p> <p>During Summer season:            CAT 6 FM first day of Summer season TIL 30 APR            CAT 7 FM 01 MAY TIL 30 SEP            CAT 6 FM 01 OCT TIL last day of Summer season            All confirmed scheduled traffic will be covered with adequate rescue and firefighting CAT.</p> <p>Higher rescue and fire fighting CAT, up to CAT 9, available on request, 24 HR PPR, sent via:            SITA: PUYAPXH or            E-mail: operations@airport-pula.hr</p>
---	---------	--

### LDPL AD 2.7 RUNWAY SURFACE CONDITION ASSESSMENT AND REPORTING, AND SNOW PLAN

1	Types of clearing equipment	NIL
2	Clearance priorities	NIL
3	Use of material for movement area surface treatment	NIL
4	Specially prepared winter runways	NIL
5	Remarks	GRF REF AD 1.2.2 for additional information.

### LDPL AD 2.8 APRONS, TAXIWAYS AND CHECK LOCATIONS/POSITIONS DATA

1	Apron surface and strength	SURFACE		STRENGTH	
		ASPH		PCN 65/F/A/W/T	
2	Designation, width, surface and strength of taxiways	DESIGNATION	WIDTH (M)	SURFACE	STRENGTH
		A	23 M	ASPH	PCN 71/F/A/W/T
		B	23 M	ASPH	PCN 71/F/A/W/T
		C	23 M	ASPH	PCN 71/F/A/W/T
		D	23 M	ASPH	PCN 71/F/A/W/T
		E	23 M	ASPH	PCN 71/F/A/W/T
		F	23 M	ASPH	PCN 71/F/A/W/T
		G	23 M	ASPH	PCN 71/F/A/W/T
		H	23 M	ASPH	PCN 71/F/A/W/T
3	ACL location and elevation	Location: Apron Elevation: 211 FT			
4	Location of VOR checkpoints	See LDPL AD 2.24.1 ADC -1			
5	Position of INS checkpoints	See LDPL AD 2.24.2 APDC -1			

**LDRI AD 2****LDRI AD 2.1 AERODROME LOCATION INDICATOR AND NAME**

LDRI - AIRPORT RIJEKA / Krk I.

**LDRI AD 2.2 AERODROME GEOGRAPHICAL AND ADMINISTRATIVE DATA**

1	ARP coordinates and its site	451300.80N 0143412.96E 143°/1250 M from THR 14
2	Direction and distance from (city)	139°, 27 KM from Rijeka (railway station)
3	Elevation/Reference temperature	278 FT / 29.9°C (JUL)
4	Geoid undulation at AD ELEV PSN	145 FT
5	MAG VAR (date of information)/Annual change	4°E (2019) / 0.15° increasing
6	AD Operator, address, telephone, telefax, AFS, SITA, E-mail, web site	Post: Zracna luka Rijeka 51513 Omisalj Phone: (+385 99) 525 8911 (+385 99) 525 8910 (+385 99) 267 5581 Fax: (+385 51) 841 236 SITA: RJKAPXH Email: operations@rijeka-airport.hr web site: <a href="http://www.rijeka-airport.hr/">http://www.rijeka-airport.hr/</a>
7	Types of traffic permitted (IFR/VFR)	IFR/VFR
8	Remarks	Nil

**LDRI AD 2.3 OPERATIONAL HOURS**

1	AD Operator	H24
2	Customs and immigration	H24
3	Health and sanitation	As AD HR SER
4	AIS Briefing Office	As ATS - Selfbriefing
5	ATS Reporting Office (ARO)	H24 - Central ARO Split; Phone: +385 21 205-444, Fax: +385 21 895-227
6	MET Briefing Office	H24
7	ATS	H24*

8	Fuelling	H24
9	Handling	As AD HR SER
10	Security	H24
11	De-icing	Not AVBL
12	Remarks	<p>AD HR SER for Helicopter Emergency Medical SER - see AD 2.3 - 1.</p> <p>All schedule operations requirement for timetable approval or change send to via Email: coo@rijeka-airport.hr. For all unschedule flights PPR is mandatory MIN 3 HR in advance via Email: operations@rijeka-airport.hr (or via Phone: +385 99 525 8910), otherwise ADDN handling fees apply.</p> <p>*If ATS is not available, only HEMS operations allowed. REF AD 2.17 REF AD 2.22</p>

#### LDRI AD 2.4 HANDLING SERVICES AND FACILITIES

1	Cargo-handling facilities	Cargo loader - capacity 7000 KG, MAX height 5.45 M. 2xCargo loader - capacity 3500 KG, MAX height 3.50 M. Pallet dollies - 6 pieces, Container dollies - 20 pieces, Luggage dollies - 35 pieces.
2	Fuel and oil types	A1, AVGAS 100LL / Oil - Nil
3	Fuelling facilities and capacity	1 Fuel Truck 18000 L (A1) 1 Fuel Truck 15000 L (A1) 10000 L (AVGAS 100LL)
4	De-icing facilities	Not AVBL
5	Hangar space for visiting aircraft	Nil
6	Repair facilities for visiting aircraft	Nil
7	Remarks	Nil

#### LDRI AD 2.5 PASSENGER FACILITIES

1	Hotels	Hotels in Rijeka, hotels on Krk Island
2	Restaurants	In the city and on Krk Island
3	Transportation possibilities	Bus, taxi, rent a car
4	Medical facilities	First aid at AD, hospital in the city.
5	Bank and Post Office	In the city, on Krk Island, Omisalj
6	Tourist Office	At AD, in the city, on Krk Island, Omisalj
7	Remarks	Nil

RWY Designator	APCH LGT type / LEN / INTST	THR LGT colour / WBAR	VASIS type (MEHT)	TDZ LGT LEN	RWY Centre Line LGT LEN / spacing / colour / INTST	RWY edge LGT LEN / spacing / colour / INTST	RWY End LGT Colour / WBAR	SWY LGT LEN (M) / Colour	Remarks
1	2	3	4	5	6	7	8	9	10
32	SALS 420 M LIH	G	PAPI (59 FT) LEFT/3°	Nil	2500 M 15 M W VRB LIH	2500 M 60 M YCZ 600 M VRB W LIH	R	Nil	LED lights: APCH, RCL and RWY End LGT

**LDRI AD 2.15 OTHER LIGHTING, SECONDARY POWER SUPPLY**

1	ABN/IBN location, characteristics and hours of operation	Nil
2	LDI location and LGT Anemometer location and LGT	WDI: 1228 M after THR 14, on the left side, lighted; 1272 M after THR 32, on the right side, lighted. Anemometer 1: 318.04 M from THR 14, lighted Anemometer 2: 295.57 M from THR 32, lighted
3	TWY edge and centre line lighting	TWY A EDGE: B VRB LIL; Centre line: Nil TWY B EDGE: B VRB LIL; Centre line: Nil
4	Secondary power supply/switch-over time	AVBL, switch-over time: 10 SEC
5	Remarks	Nil

**LDRI AD 2.16 HELICOPTER LANDING AREA**

1	Coordinates TLOF or THR of FATO Geoid undulation	Nil
2	TLOF and/or FATO elevation M/FT	Nil
3	TLOF and FATO area dimensions, surface, strength, marking	Nil
4	True and MAG BRG of FATO	Nil
5	Declared distance available	Nil
6	APP and FATO lighting	Nil
7	Remarks	Nil

**LDRI AD 2.17 ATS AIRSPACE**

1	Designation and lateral limits	CTR Rijeka 452815N 0142611E 450454N 0145038E 445714N 0143623E 452039N 0141058E to point of origin.
2	Vertical limits	4000 FT ALT / GND
3	Airspace classification	D
4	ATS unit call sign Language(s)	RIJEKA TORANJ / RIJEKA TOWER Croatian, English
5	Transition altitude	10000 FT MSL
6	Remarks	If ATS is not available, RMZ Rijeka activated within same lateral limits as CTR Rijeka, 1000 FT AGL/GND. REF AD 2.22

## LDRI AD 2.18 ATS COMMUNICATION FACILITIES

Service designation	Call sign	Frequency	Hours of operation	Remarks
1	2	3	4	5
APP	PULA RADAR	124.600 MHZ	H24	Nil
	PULA RADAR	127.675 MHZ	H24	Nil
	PULA RADAR	121.500 MHZ	H24	EMERG FREQ
TWR	RIJEKA TORANJ / RIJEKA TOWER	119.000 MHZ	H24	Primary FREQ
		125.425 MHZ	H24	ALTN FREQ
		121.500 MHZ	H24	EMERG FREQ

## LDRI AD 2.19 RADIO NAVIGATION AND LANDING AIDS

Type of aid CAT of ILS/MLS (VOR/ILS/MLS VAR)	ID	Frequency	Hours of operation	Site of transmitting antenna coordinates	Elevation of DME transmitting antenna	Remarks
1	2	3	4	5	6	7
VOR/DME (4°E/2019)	PUL	111.25 MHZ *CH49Y	H24	445332.52N 0135505.23E	215 FT	Coverage 100 NM except in QDR 309°-024°: Unsatisfactory VOR/DME PUL power density due to terrain (Flight profile: orbit flight, radius 40NM, 3000FT to 6500FT QNH).
VOR/DME (4°E/2019)	RJK	117.8 MHZ CH125X	H24	451326.85N 0143401.06E	362 FT	Coverage 60 NM
NDB	BRZ	400 KHZ	H24	452525.14N 0142043.44E		318°MAG/14.99 NM from THR 14. Range 50 NM
NDB	CRE	433 KHZ	H24	445410.37N 0142459.57E		Range 50 NM
L	RI	289 KHZ	H24	450815.04N 0143910.56E		140°MAG/5.22 NM from THR 32. Range 25 NM
LOC 14	IKR	108.5 MHZ	H24	451221.87N 0143454.46E		ILS CAT I
GP 14		329.9 MHZ	H24	451324.15N 0143346.29E		3°, RDH 16 M GP 14 coverage (right side) reduced to 6° due to low clearance.
OM14	Dashes-Dashes	75 MHZ	H24	452004.75N 0142648.55E		15.09 KM from THR 14

Type of aid CAT of ILS/MLS (VOR/ILS/MLS VAR)	ID	Frequency	Hours of operation	Site of transmitting antenna coordinates	Elevation of DME transmitting antenna	Remarks
1	2	3	4	5	6	7
MM14	Dots- Dashes	75 MHZ	H24	451403.80N 0143308.47E		1.24 KM from THR 14

---

## LDRI AD 2.20 LOCAL AERODROME REGULATIONS

---

Arriving aircraft shall in due time before entering the RMZ make an initial call on the RMZ frequency, according to SERA.6005 (a) (2).

Engines start up is not allowed without TWR approval, including VFR flights.

WARNING: Gusts, wind shear and turbulence can be expected on final approaches and on RWY 14/32 in conditions of strong north-easterly winds.

### LDRI AD 2.20.1. TAXI PROCEDURES

For aircraft with higher letter code than airport letter code minimum thrust settings are to be used when taxiing on apron, away from parking stand and on TWY A and B.

### LDRI AD 2.20.2. FOUR-ENGINE AIRCRAFT OPERATION

Outer engines shall be used on idle power only, during taxiing.

---

## LDRI AD 2.21 NOISE ABATEMENT PROCEDURES

---

NIL

---

## LDRI AD 2.22 FLIGHT PROCEDURES

---

All instrument approach procedures and all standard instrument departures (RWY14 and RWY32) are suspended if ATS is not available.



APRON WEST / ACL ELEV 350 FT  
General aviation APRON ELEV 349 FT

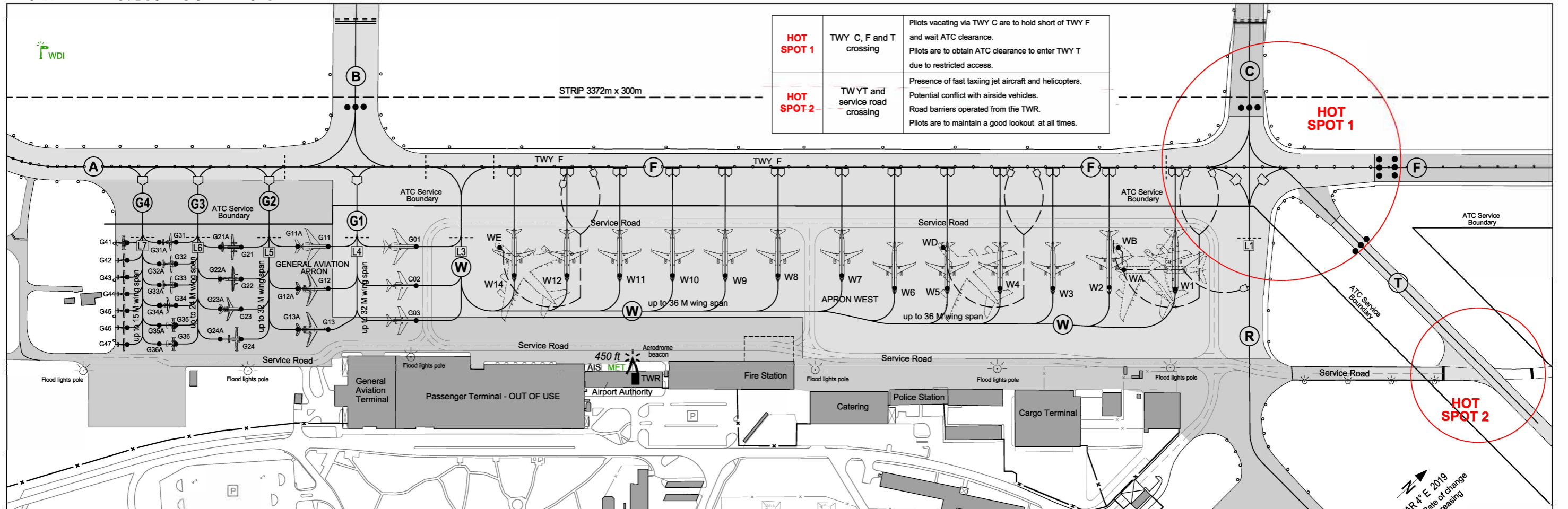
ZAGREB ATIS 124.575

ZAGREB TOWER 118.300

ZAGREB GROUND 121.850

ZAGREB / Franjo Tudman  
CROATIA

AIRCRAFT PARKING / DOCKING CHART - ICAO



<b>HOT SPOT 1</b>	TWY C, F and T crossing	Pilots vacating via TWY C are to hold short of TWY F and wait ATC clearance. Pilots are to obtain ATC clearance to enter TWY T due to restricted access.
<b>HOT SPOT 2</b>	TWYT and service road crossing	Presence of fast taxiing jet aircraft and helicopters. Potential conflict with airside vehicles. Road barriers operated from the TWR. Pilots are to maintain a good lookout at all times.

TAXIING AND PARKING RESTRICTIONS AND NOTES - APRON WEST AND GENERAL AVIATION:

- EXITING FROM PARKING POSITION "G01" RESTRICTION:**
- ACFT exit from G01 is allowed only when ACFT may continue on its way to TWY "F" and enter the TWY "F" without stopping at the intermediate holding position (IHP) "L3".
  - TXL W must be used for ACFT exit from PSNs "G01" to "G03".
- TAXIING ON APRON:**
- Parking position number for inbound traffic is provided by ATC.
  - Adhere strictly to the yellow taxi guide line and Marshalling signals. For other restrictions adhere strictly to Zagreb TWR instructions and Follow Me guidance.
  - ACFT is not allowed to enter the parking position if Marshaller is not present.
  - ACFT Code Letter "F" has to await Follow Me when entering part of TWY "F" from TWY "C" to TWY "B" for taxiing to parking position "WB", "WD" & "WE".
  - In order to enter PSN WA, ACFT must turn from TWY "F" to TXL "R".
  - TXL "W" from PSN "W1" to PSN "W14" up to 36,0 m wing span.
  - ACFT exit from PSN "W1" to "W14" for ACFT code letter "C" is mandatory in the direction to the west.
  - ACFT exit from PSNs "W1" & "W2" for ACFT code letter "D" and "E" is mandatory by using push-back.
  - Follow Me guidance is mandatory on TWY "R" for self-maneuvring ACFT.
  - The movement of two or more ACFT on the apron at the same time is allowed in conditions other than LVP, when the ACFT are at a safe distance from each other.
  - Mandatory notification of stand position number to ATC with start up request.

Helicopter parking:

All PSNs can be used for helicopter parking considering helicopter dimensions. Zagreb TWR instructions and Follow Me guidance shall be followed for ground taxi or air taxi of helicopters between TWYs and parking positions.

TAXIING AND PARKING RESTRICTIONS AND NOTES - GENERAL AVIATION APRON:

- Taxiing on Apron**
- TXL "G1" must be used for enter to PSNs "G01" to "G03" & PSNs "G11A" to "G13A".
  - TXL "G2" must be used for enter to PSNs "G11" to "G13" & PSNs "G21A" to "G24A".
  - TXL "G3" must be used for enter to PSNs "G21" to "G24" & PSNs "G31A" to "G36A".
  - TXL "G4" must be used for enter to PSNs "G31" to "G36", PSNs "G41" to "G47".
  - Departing ACFT must stop at intermediate holding position (IHP) on taxiway (TXL) and wait for further taxi instructions from Zagreb TWR:
    - IHP "L4" on TXL "G1",
    - IHP "L5" on TXL "G2",
    - IHP "L6" on TXL "G3" &
    - IHP "L7" on TXL "G4".
  - PSNs "G41" to "G47" are Push-In / Taxi-Out.
  - PSNs "G01" to "G03", "G11" to "G13", "G11A" to "G13A", "G21" to "G24", "G21A" to "G24A", "G31" to "G36", "G31A" to "G36A" are self-maneuvring via designated TXL.

Parking Positions (PSN)	
PSN: W1 to W14 (for ACFT Code Letter "C") & PSN: WA, WB, WD & WE	Taxi-in / Taxi Out
PSN: W1 & W2	For ACFT Code Letter "D" and "E" Taxi In / Push Back.
PSN: WB, WD & WE	ACFT CODE LETTER "F"
PSN: W1 & PSN No: WA	ACFT CODE LETTER "E"
PSN: W2	ACFT CODE LETTER "D"
PSN: W3 to W14	ACFT CODE LETTER "C"
PSN: W1	Maximum Wing Span 52M & Maximum Length 55M
PSN: W2	Maximum Wing Span 42M & Maximum Length 55M
PSN: W3 to W7	Maximum Wing Span 36M & Maximum Length 55M
PSN: W8 to W14	Maximum Wing Span 36M & Maximum Length 45M
PSN: WA	Maximum Wing Span 64,8M & Maximum Length 74,77M
PSN: WB, WD & WE	Maximum Wing Span 88,4M & Maximum Length 84M

Restrictions for some parking positions:	
When PSNs "WA", "WB", "WD" & "WE" are in use, the following positions must be vacated or with limitation:	
When PSN "WA" is in use, PSNs "WB", "W1" & "W2" must be vacated.	
When PSN "WB" is in use, PSNs "WA", "W1" & "W2" must be vacated.	
When ACFT is entering to PSN "WD", PSN "W3" must be vacated.	
When PSN "WD" is in use, PSNs "W4", "W5" & "W6" must be vacated.	
When PSN "WE" is in use, PSNs "W11", "W12" & "W14" must be vacated.	
When PSN "WD" is in use, ACFT exit from PSN "W3", is mandatory by using push-back.	
When PSN "WE" is in use, ACFT exit from PSNs "W10" - "W1", is mandatory by using push-back.	
When PSN "W1" and/or "W2" are/is in use, PSNs "WA" and "WB" must be vacated.	
When PSN "W3" and/or "W4", and/or "W5" and/or "W6" are/ is in use, PSN "WD" must be vacated.	
When PSN "W11" and/or "W12", and/or "W14" are/is in use, PSN "WE" must be vacated.	

PARKING POSITIONS AND INS / REFERENCE POINTS (WGS-84)								
GENERAL AVIATION APRON			APRON WEST					
PSN	INS COORDINATES		PSN	INS COORDINATES		PSN	INS COORDINATES	
G01	454357.31N	0160329.64E	G31	454352.97N	0160322.81E	WA	454409.89N	0160350.04E
G02	454356.54N	0160330.67E	G31A	454352.66N	0160322.33E	WB	454410.22N	0160349.31E
G03	454355.86N	0160331.59E	G32	454352.55N	0160323.37E	WD	454407.00N	0160344.40E
G11	454355.69N	0160327.18E	G32A	454352.24N	0160322.91E	WE	454358.83N	0160332.00E
G11A	454355.13N	0160326.32E	G33	454352.13N	0160323.93E	W1	454410.46N	0160351.99E
G12	454354.87N	0160328.29E	G33A	454351.83N	0160323.46E	W2	454409.28N	0160350.10E
G12A	454354.31N	0160327.43E	G34	454351.73N	0160324.47E	W3	454408.22N	0160348.55E
G13	454354.06N	0160329.36E	G34A	454351.42N	0160324.00E	W4	454407.25N	0160347.07E
G13A	454353.50N	0160328.51E	G35	454351.34N	0160324.99E	W5	454406.28N	0160345.60E
G21	454354.08N	0160324.76E	G35A	454351.04N	0160324.52E	W6	454405.31N	0160344.12E
G21A	454353.70N	0160324.17E	G36	454350.98N	0160325.48E	W7	454404.58N	0160342.31E
G22	454353.45N	0160325.60E	G36A	454350.67N	0160325.01E	W8	454403.41N	0160340.52E
G22A	454353.07N	0160325.01E	G41	454352.06N	0160321.46E	W9	454402.44N	0160339.05E
G23	454352.86N	0160326.39E	G42	454351.72N	0160321.92E	W10	454401.47N	0160337.57E
G23A	454352.48N	0160325.81E	G43	454351.39N	0160322.36E	W11	454400.49N	0160336.09E
G24	454352.27N	0160327.18E	G44	454351.06N	0160322.80E	W12	454359.52N	0160334.62E
G24A	454351.89N	0160326.59E	G45	454350.73N	0160323.25E	W14	454358.55N	0160333.14E
			G46	454350.40N	0160323.69E			
			G47	454350.07N	0160324.13E			



CHANGE: FIRE STATION LOCATION

OVA STRANICA JE NAMJERNO OSTAVLJENA PRAZNA  
THIS PAGE INTENTIONALLY LEFT BLANK