

Phone: +385 1 6259 373
+385 1 6259 372
+385 1 6259 381

AFS: LDZAYOYX

Email: aip@crocontrol.hr

URL: <https://www.crocontrol.hr>



**HRVATSKA KONTROLA
ZRAČNE PLOVIDBE**

Hrvatska kontrola zračne plovidbe d.o.o.
Služba zrakoplovnog informiranja (AIM/AIS)
Rudolfa Fizira 2
10410 Velika Gorica, p.p. 103
Hrvatska

AIRAC AIP SUP 002/2025

Na snazi od: 23-Jan-2025

Vrijedi do: UFN

Datum izdavanja: 12-Dec-2024

LDDU – Zračna luka DUBROVNIK/Ruđer Bošković - Zamjenske procedure tijekom radova premiještanja VOR/DME DBK

1. UVOD

Na Zračnoj luci DUBROVNIK/Ruđer Bošković izvode se radovi na premiještanju VOR/DME DBK na novu lokaciju. Tijekom radova, VOR/DME DBK će biti izvan upotrebe. Dodatni operativni utjecaji zona radova objavljivat će se po potrebi NOTAM-ima.

2. UTJECAJ NA LETAČKE POSTUPKE

Sljedeći letački postupci za LDDU RWY11/29 bit će privremeno suspendirani:

- LDDU AD 2.24.12 IAC ILS z or LOC z RWY11
- LDDU AD 2.24.12 IAC ILS y or LOC y RWY11
- LDDU AD 2.24.8 SID RWY11 – AMUGO 4C, AMUGO 2E, AMUGO 2F, LOKRU 3C, MOKUN 5C, MADOS 2E, BEVIS 4C, MOKUN 2E, MADOS 5C
- LDDU AD 2.24.8 SID RWY29 – DOPUT 4D, NERRA 9D, LASDU 2D, AMUGO 2D, LOKRU 2D, MOKUN 4D, MADOS 5D, BEVIS 3D
- LDDU AD 2.24.10 STAR RWY 11/29 – NERRA 8A, MOKUN 4A, BEVIS 3A, LOKRU 2A, AMUGO 2A
- LDDU AD 2.24.12 IAC L RWY11
- LDDU AD 2.24.12 IAC VOR RWY11
- LDDU AD 2.24.13 VAC RWY29
- LDDU AD 2.24.13 VOC

Na snazi će biti novi privremeni zamjenski instrumentalni letački postupci za RWY 11/29 koji su dio ovog AIRAC AIP SUP-a:

- LDDU AD 2.24 12 IAC ILS w OR LOC w RWY11, WEF 23 JAN 2025 - UFN
- LDDU AD 2.24.8 - SID RWY11, WEF 23 JAN 2025 - UFN
- LDDU AD 2.24.8 SID RWY29, WEF 23 JAN 2025 - UFN
- LDDU AD 2.24.10 STAR RWY11 - WEF 23 JAN 2025 - UFN

3. INSTRUMENTALNI LETAČKI POSTUPCI IZ AIP-a REPUBLIKE HRVATSKE KOJI OSTAJU NA SNAZI

Na snazi će biti i letački postupci koji nisu suspendirani ovim AIRAC AIP SUP-om:

- LDDU AD 2.24.8 SID RNAV RWY11 – MOKUN 1W, BEVIS 1W, AIOSA 1W, AMUGO 1W, MADOS 1W
- LDDU AD 2.24.8 SID RNAV RWY29 – DOPUT 1V, AMUGO 1V, AIOSA 1V, BEVIS 1V, MOKUN 2V
- LDDU AD 2.24.10 STAR RNAV RWY11 – SIPAL 3Z, SIPAL 1H, NETKO 1Z, NETKO 1H, MOKUN 4Z, BEVIS 3Z, AIOSA 1Z, ORAKA 3Z
- LDDU AD 2.24.10 STAR RNAV RWY29 – SIPAL 2Y, SIPAL 1L, NETKO 1Y, NETKO 1L, MOKUN 2Y, BEVIS 2Y, AIOSA 2Y, ORAKA 2Y
- LDDU AD 2.24.12 IAC RNP RWY11 - samo DBK VOR/DME podaci na karti nisu važeći
- LDDU AD 2.24.12 IAC RNP RWY29 (AR) - samo DBK VOR/DME DBK podaci na karti nisu važeći
- LDDU AD 2.24.12 IAC RNP-b RWY29

4. PREPREKE

Za vrijeme radova na novoj lokaciji 42 34 03.53N 018 15 21.99E, DBK VOR/DME uređaj probija prijelaznu površinu ograničenja prepreka 8,8 M. Bilo koji utjecaj novih prepreka na postupke letenja će biti objavljen NOTAM-om.

Za vrijeme trajanja radova utjecaj strojeva i drugih prepreka na površine ograničenja prepreka objavit će se NOTAM-om.

Ovaj AIRAC AIP SUP poništava i zamjenjuje AIRAC AIP SUP 009/2024.

*Upišite AIRAC AIP SUP 002/2025 u GEN 0.3.
Izbrišite AIRAC AIP SUP 009/2024 iz GEN 0.3*

Ref AIP: LDDU AD 2

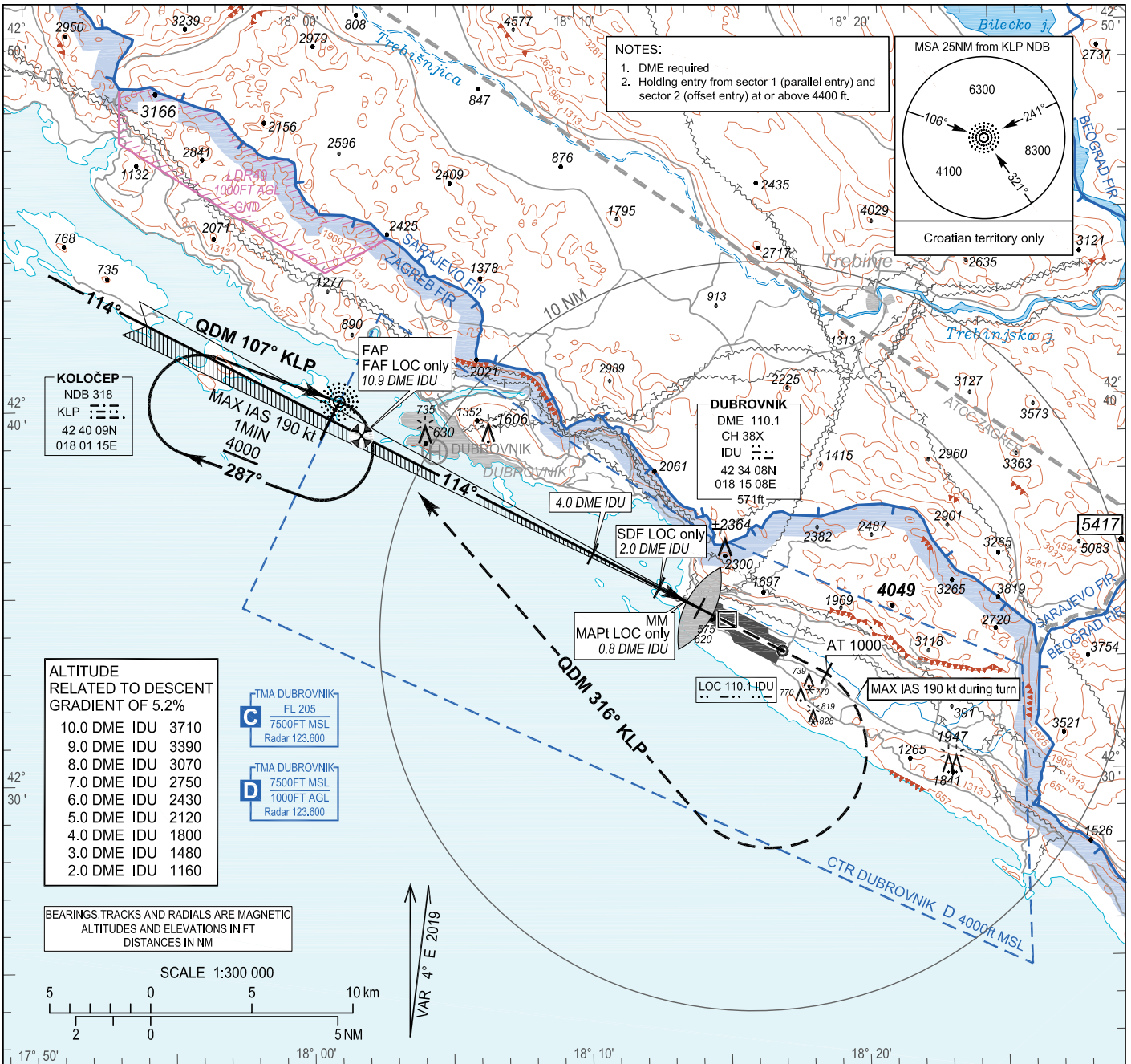
INSTRUMENT APPROACH
CHART-ICAO

AD ELEV 527
HEIGHTS RELATED
TO THR RWY 11 ELEV 519

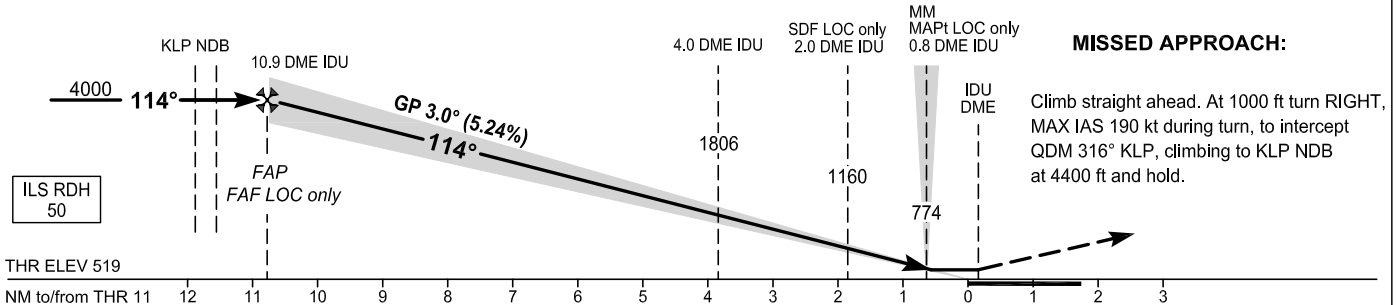
DUBROVNIK ATIS	118.425
DUBROVNIK RADAR	123.600
DUBROVNIK TOWER	129.500
DUBROVNIK DELIVERY	125.400

DUBROVNIK / Ruđer Bošković (LDDU)

ILS w or LOC w RWY 11



TRANSITION ALT 10 000



	OCA(H)	A	B	C	D
Straight-in Approach	ILS CAT I press. altim.	704 (185)	714 (195)	721 (202)	730 (211)
	LOC only	870 (351)			

Timing not authorized for defining the MAPt.							
GS(KT)	70	90	100	120	140	160	180
Rate of descent (ft / min)	372	478	531	637	743	850	956

CHANGE: Temporary new chart ILS w or LOC w RWY 11 due to DBK YOR/DME U/S.

AERONAUTICAL DATABASE REQUIREMENTS

Conventional procedure essential fixes/points

ILS w or LOC w RWY 11

LOC only - final approach descent angle: 3.00°

Fix identification	Coordinates	True bearing or ARC distance providing track	True bearing or distance providing intersection
IAF (KLP NDB)	42 40 09.42N 018 01 15.07E	-	-
FAF LOC only	42 39 14.2N 018 02 02.3E	118.21° (IDU LOC)	10.93 DME IDU
SDF LOC only	42 35 01.7N 018 12 41.9E	118.21° (IDU LOC)	2.01 DME IDU
MAPt LOC only (MM)	42 34 27.81N 018 14 08.83E	118.21° (IDU LOC)	0.80 DME IDU

STANDARD DEPARTURE CHART
INSTRUMENT (SID) - ICAO

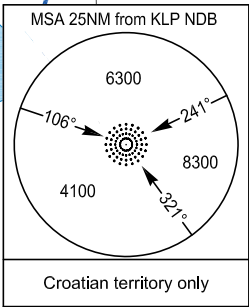
TRANSITION ALTITUDE
10 000

DUBROVNIK ATIS	118 425
DUBROVNIK TOWER	129 500
DUBROVNIK DELIVERY	125 400
DUBROVNIK RADAR	123 600

DUBROVNIK / Ruder Bošković (LDDU)
NERRA 1B RWY 11

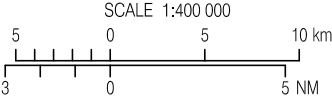
RADIO COMMUNICATION FAILURE:
SQUAWK A7600. MAINTAIN LAST ASSIGNED LEVEL FOR 2 MINUTES, THEN CLIMB TO FPL CRUISING LEVEL. AIRCRAFT UNDER VECTORING SHALL, AFTER SETTING TRANSPONDER TO A7600, PROCEED IN THE MOST DIRECT MANNER POSSIBLE TO REJOIN THE FPL ROUTE NO LATER THAN THE NEXT SIGNIFICANT POINT, CLIMBING TO THE FPL CRUISING LEVEL AND TAKING INTO CONSIDERATION THE APPLICABLE MNM FLIGHT ALT.

- NOTES:**
1. Caution: Close-in obstacle (trees and buildings) right of the centerline up to 150 ft above DER, up to 0.8 NM from DER. (REF AIP AD 2.10)
 2. DUBROVNIK DELIVERY SERVICE (125,400 MHz) defined in ATIS. If no contact on DELIVERY, contact DUBROVNIK TOWER on 129,500 MHz.
 3. After take-off climb initially 8000 ft AMSL.
 4. Unless otherwise instructed, after passing 3000 ft contact DUBROVNIK RADAR on 123,600 MHz.



VAR 4° E 2019

BEARINGS, TRACKS AND RADIALS ARE MAGNETIC
ALTITUDES AND ELEVATIONS IN FT
DISTANCES IN NM



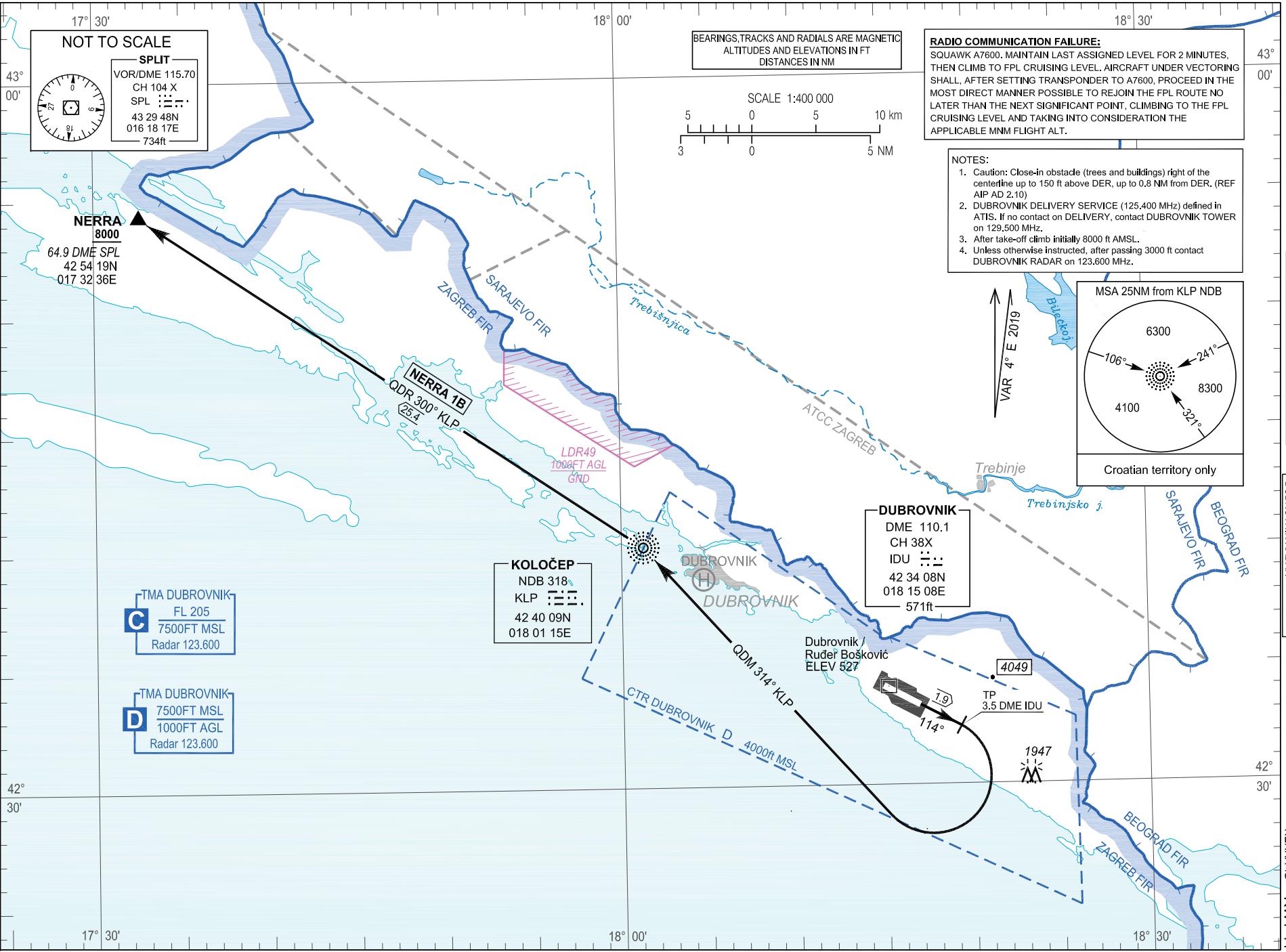
NOT TO SCALE

SPLIT

VOR/DME 115.70
CH 104 X
SPL

43 29 48N
016 18 17E
734ft

CHANGE: Due to DBK VOR/DME U/S the new SID NERRA 1B temporarily in use.



DUBROVNIK / Ruđer Bošković (LDDU)

RWY 11 NERRA 1B

SID RWY 11				
Designator	Route	After take-off		Remarks
		Climb initially	Contact	
NERRA 1B	NERRA ONE BRAVO DEPARTURE MNM PDG 5.0% (304 ft/NM) up to 2300 ft. Climb straight ahead. At 3.5 DME IDU, turn RIGHT to intercept QDM 314° KLP climbing to KLP NDB. At KLP NDB, turn LEFT and continue climbing on QDR 300° KLP to NERRA.	8000 ft	After passing 3000 ft AMSL, contact Dubrovnik Radar on 123.600 MHZ.	Cross NERRA at 8000 ft or above.

CHANGE: Due to DBK VOR/DME U/S the new SID NERRA 1B temporarily in use.

STANDARD DEPARTURE CHART
INSTRUMENT (SID) - ICAO

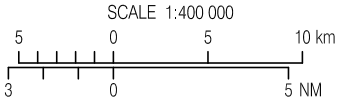
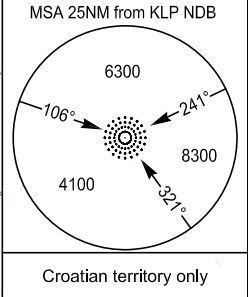
TRANSITION ALTITUDE
10 000

DUBROVNIK ATIS 118.425
DUBROVNIK TOWER 129.500
DUBROVNIK DELIVERY 125.400
DUBROVNIK RADAR 123.600

DUBROVNIK / Ruder Bošković (LDDU)
NERRA-2D RWY 29

RADIO COMMUNICATION FAILURE:
SQUAWK A7600. MAINTAIN LAST ASSIGNED LEVEL FOR 2 MINUTES, THEN CLIMB TO FPL CRUISING LEVEL. AIRCRAFT UNDER VECTORIZING SHALL, AFTER SETTING TRANSPONDER TO A7600, PROCEED IN THE MOST DIRECT MANNER POSSIBLE TO REJOIN THE FPL ROUTE NO LATER THAN THE NEXT SIGNIFICANT POINT, CLIMBING TO THE FPL CRUISING LEVEL AND TAKING INTO CONSIDERATION THE APPLICABLE MNM FLIGHT ALT.

- NOTES:
- Caution: Close-in obstacles (trees, buildings and terrain) left and right of the centerline up to 120 ft above DER, up to 0.3 NM from DER. (REF AIP AD 2.10)
 - DUBROVNIK DELIVERY SERVICE (125.400 MHz) defined in ATIS. If no contact on DELIVERY, contact DUBROVNIK TOWER on 129.500 MHz.
 - After take-off climb initially 8000 ft AMSL
 - Unless otherwise instructed, after passing 3000 ft contact DUBROVNIK RADAR on 123.600 MHz.



BEARINGS, TRACKS AND RADIALS ARE MAGNETIC
ALTITUDES AND ELEVATIONS IN FT
DISTANCES IN NM

CHANGE: Due to DBK VOR/DME U/S the new SID NERRA 2D temporarily in use.

NOT TO SCALE

SPLIT
VOR/DME 115.70
CH 104 X
SPL : : : :
43 29 48N
016 18 17E
734ft

NERRA
8000
64.9 DME SPL
42 54 19N
017 32 36E

KOLOČEP
NDB 318
KLP : : : :
42 40 09N
018 01 15E

C TMA DUBROVNIK
FL 205
7500FT MSL
Radar 123.600

D TMA DUBROVNIK
7500FT MSL
1000FT AGL
Radar 123.600

DUBROVNIK / Ruđer Bošković (LDDU)

RWY 29 NERRA 2D

SID RWY 29				
Designator	Route	After take-off		Remarks
		Climb initially	Contact	
NERRA 2D	NERRA TWO DELTA DEPARTURE Climb to KLP NDB on QDM 297° KLP. At KLP NDB continue on QDR 300° KLP to NERRA.	8000 ft	After passing 3000 ft AMSL, contact Dubrovnik Radar on 123.600 MHZ.	Cross NERRA at 8000 ft or above.

CHANGE: Due to DBK YOR/DME U/S the new SID NERRA 2D temporarily in use.

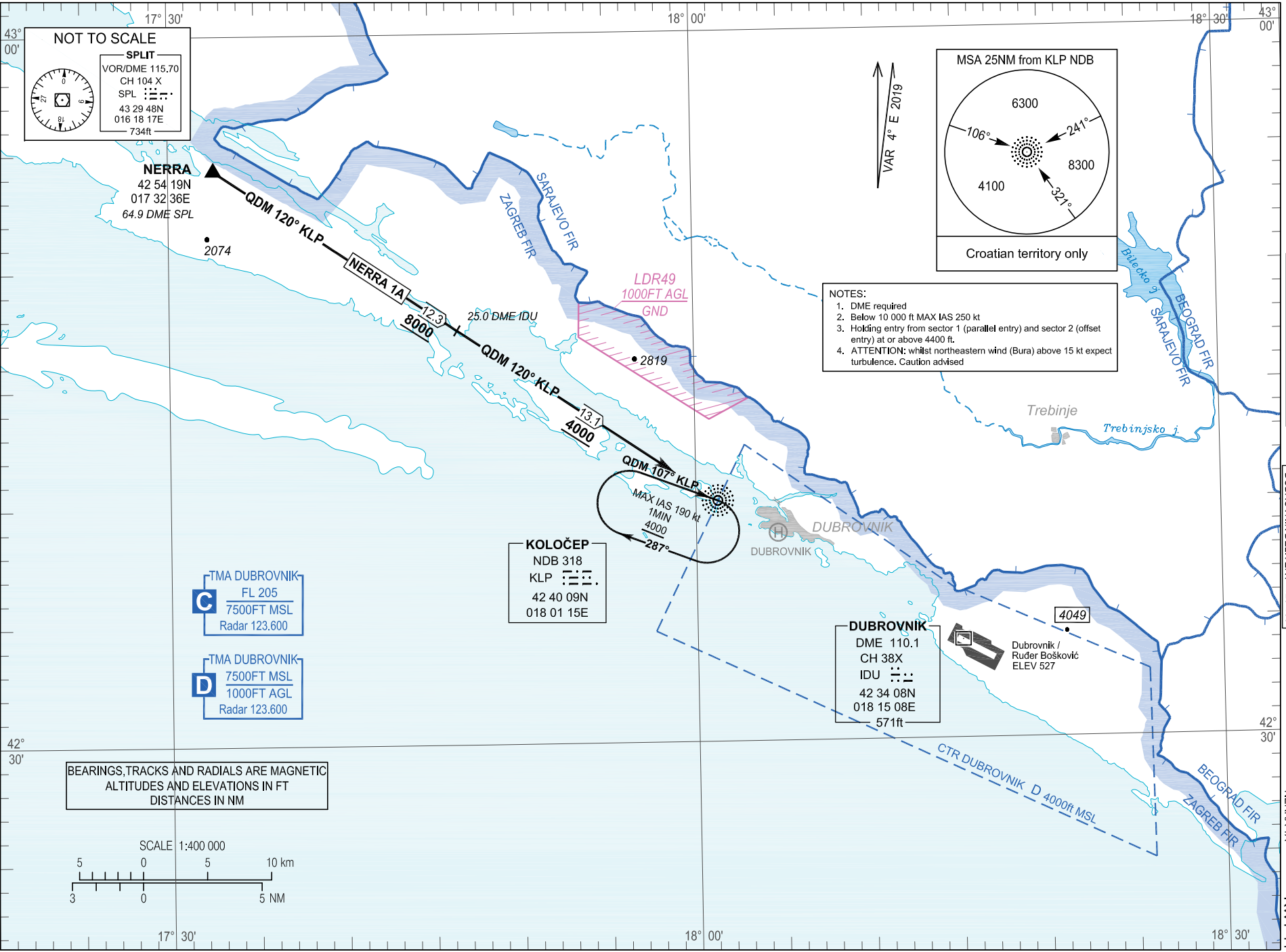
STANDARD ARRIVAL CHART
INSTRUMENT (STAR) - ICAO

TRANSITION ALTITUDE
10 000

DUBROVNIK ATIS 118.425
DUBROVNIK RADAR 123.600
DUBROVNIK TOWER 129.200
DUBROVNIK DELIVERY 125.400

DUBROVNIK / Ruder Bošković (LDDU)
RWY 11

CHANGE: Due to DBK VOR/DME U/S the new STAR NERRA 1A temporarily in use.



NOTES:
1. DME required
2. Below 10 000 ft MAX IAS 250 kt
3. Holding entry from sector 1 (parallel entry) and sector 2 (offset entry) at or above 4400 ft.
4. ATTENTION: whilst northeastern wind (Bura) above 15 kt expect turbulence. Caution advised

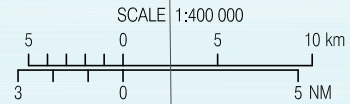
NOT TO SCALE

SPLIT
VOR/DME 115.70
CH 104 X
SPL : : : :
43 29 48N
016 18 17E
734ft

TMA DUBROVNIK
FL 205
7500FT MSL
Radar 123.600

TMA DUBROVNIK
7500FT MSL
1000FT AGL
Radar 123.600

BEARINGS, TRACKS AND RADIALS ARE MAGNETIC
ALTITUDES AND ELEVATIONS IN FT
DISTANCES IN NM



DUBROVNIK / Ruđer Bošković (LDDU)

RWY 11 NERRA 1A

LDDU STAR RWY 11

Designator	Route	Descend	Contact	Remarks
NERRA 1A	NERRA ONE ALPHA ARRIVAL From NERRA proceed on QDM 120° KLP (MNM ALT 8000 ft). At 25.0 DME IDU proceed on QDM 120°T KLP (MNM ALT 4000 ft) to KLP NDB and hold.	As cleared by ATC		

CHANGE: Due to DBK VOR/DME U/S the new STAR NERRA 1A temporarily in use.