

Phone: +385 1 6259 373  
+385 1 6259 372  
+385 1 6259 381

AFS: LDZAYOYX

Email: aip@crocontrol.hr

URL: <https://www.crocontrol.hr>



**Croatia Control Ltd.**  
**AIM/AIS Service**  
**Rudolfa Fizira 2**  
**10410 Velika Gorica, PO Box 103**  
**Croatia**

**AIRAC AIP SUP 002/2025**

**Effective Date: 23-Jan-2025**

**End Date: UFN**

**Publication Date: 12-Dec-2024**

## **LDDU - Airport DUBROVNIK/Rudjer Boskovic - Supplementary flight procedures during VOR/DME DBK relocation WIP**

### **1. Introduction**

At Airport DUBROVNIK/Rudjer Boskovic work is being carried out on relocation of VOR/DME DBK to a new location. During the works, VOR/DME DBK will be out of service. Additional operational impacts of work zones will be published as necessary in NOTAMs.

### **2. Impact on Flight Procedures**

Following Instrument Flight Procedures for LDDU RWY 11/29 will be temporary suspended:

- LDDU AD 2.24.12 IAC ILS z or LOC z RWY11
- LDDU AD 2.24.12 IAC ILS y or LOC y RWY11
- LDDU AD 2.24.8 SID RWY11 - AMUGO 4C, AMUGO 2E, AMUGO 2F, LOKRU 3C, MOKUN 5C, MADOS 2E, BEVIS 4C, MOKUN 2E, MADOS 5C
- LDDU AD 2.24.8 SID RWY29 - DOPUT 4D, NERRA 9D, LASDU 2D, AMUGO 2D, LOKRU 2D, MOKUN 4D, MADOS 5D, BEVIS 3D
- LDDU AD 2.24.10 STAR RWY 11/29 - NERRA 8A, MOKUN 4A, BEVIS 3A, LOKRU 2A, AMUGO 2A
- LDDU AD 2.24.12 IAC L RWY11
- LDDU AD 2.24.12 IAC VOR RWY11
- LDDU AD 2.24.13 VAC RWY29
- LDDU AD 2.24.13 VOC

New RWY 11/29 temporary replacement Instrument Flight Procedures put in place, as part of this AIRAC AIP SUP:

- LDDU AD 2.24.12 IAC ILS w or LOC w RWY11, WEF 23 JAN 2025 - UFN
- LDDU AD 2.24.8. SID RWY11, WEF 23 JAN 2025 - UFN
- LDDU AD 2.24.8 SID RWY29, WEF 23 JAN 2025 - UFN
- LDDU AD 2.24.10 STAR RWY11 - WEF 23 JAN 2025 - UFN

---

### 3. Instrument Flight Procedures that stay effective in AIP Republic of Croatia

The following Instrument Flight Procedures, not suspended by this AIRAC AIP SUP, that are available for use:

- LDDU AD 2.24.8 SID RNAV RWY11 - MOKUN 1W, BEVIS 1W, AIOSA 1W, AMUGO 1W, MADOS 1W
- LDDU AD 2.24.8 SID RNAV RWY29 - DOPUT 1V, AMUGO 1V, AIOSA 1V, BEVIS 1V, MOKUN 2V
- LDDU AD 2.24.10 STAR RNAV RWY11 - SIPAL 3Z, SIPAL 1H, NETKO 1Z, NETKO 1H, MOKUN 4Z, BEVIS 3Z, AIOSA 1Z, ORAKA 3Z
- LDDU AD 2.24.10 STAR RNAV RWY29 - SIPAL 2Y, SIPAL 1L, NETKO 1Y, NETKO 1L, MOKUN 2Y, BEVIS 2Y, AIOSA 2Y, ORAKA 2Y
- LDDU AD 2.24.12 IAC RNP RWY11 - only DBK VOR/DME data on the chart not valid
- LDDU AD 2.24.12 IAC RNP RWY29 (AR) - only DBK VOR/DME data on the chart not valid
- LDDU AD 2.24.12 IAC RNP-b RWY29

### 4. Obstacles

During the works period at the new location 423403.53N 0181521.99E, the DBK VOR/DME ground station penetrates transitional surface 8,8 M. Any impact of new obstacles on the instrument flight procedures will be published in NOTAM. During the works, any possible penetration of the obstacle limitation surfaces by the machinery or similar, will be published in NOTAM.

This AIRAC AIP SUP cancels and replaces AIRAC AIP SUP 009/2024.

Record entry of AIRAC AIP SUP 001/2025 in GEN 0.3

Delete entry of AIRAC AIP SUP 009/2024 in GEN 0.3.

Ref AIP: LDDU AD 2

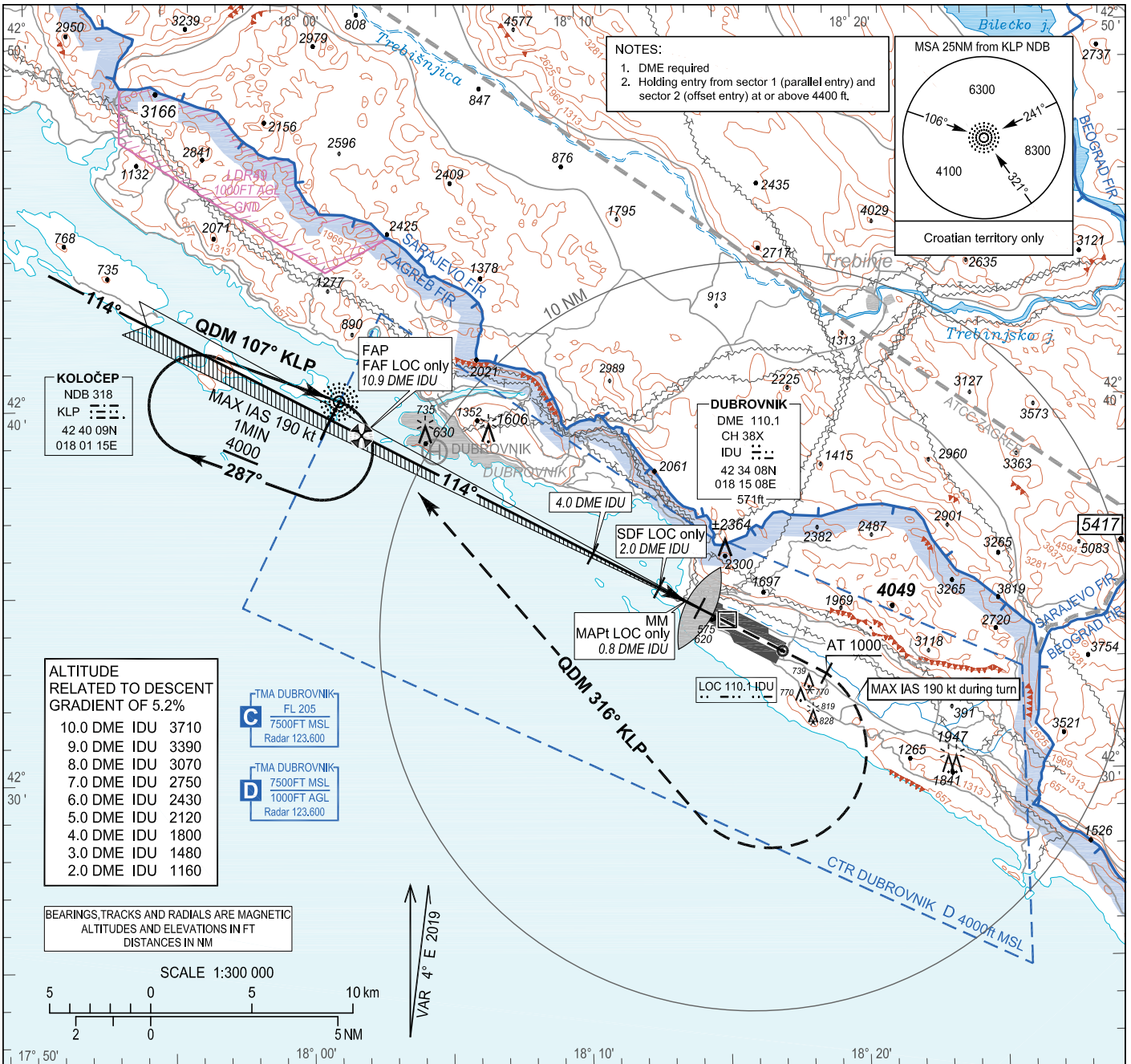
INSTRUMENT APPROACH  
CHART-ICAO

AD ELEV 527  
HEIGHTS RELATED  
TO THR RWY 11 ELEV 519

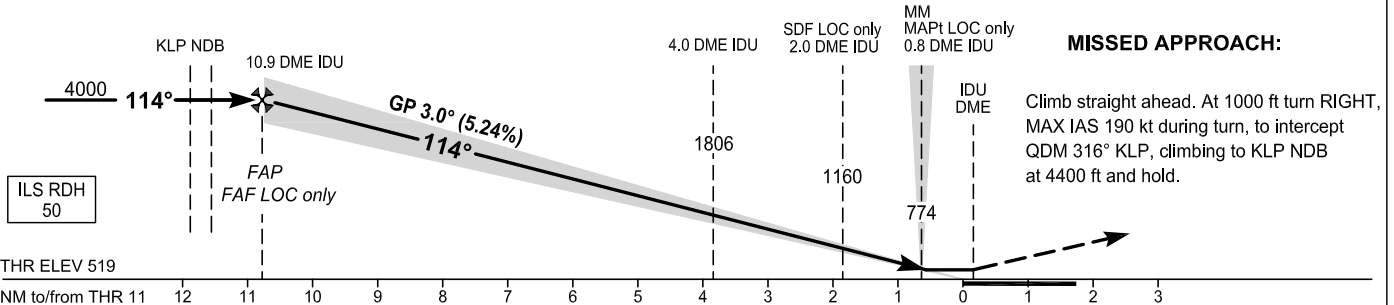
DUBROVNIK ATIS	118.425
DUBROVNIK RADAR	123.600
DUBROVNIK TOWER	129.500
DUBROVNIK DELIVERY	125.400

DUBROVNIK / Ruđer Bošković (LDDU)

ILS w or LOC w RWY 11



TRANSITION ALT 10 000



OCA(H)	A	B	C	D
ILS CAT I press. altim.	704 (185)	714 (195)	721 (202)	730 (211)
LOC only	870 (351)			

Timing not authorized for defining the MAPt.

GS(KT)	70	90	100	120	140	160	180
Rate of descent (ft / min)	372	478	531	637	743	850	956

CHANGE: Temporary new chart ILS w or LOC w RWY 11 due to DBK YOR/DME U/S.

## AERONAUTICAL DATABASE REQUIREMENTS

Conventional procedure essential fixes/points

ILS w or LOC w RWY 11

LOC only - final approach descent angle: 3.00°

Fix identification	Coordinates	True bearing or ARC distance providing track	True bearing or distance providing intersection
IAF (KLP NDB)	42 40 09.42N 018 01 15.07E	-	-
FAF LOC only	42 39 14.2N 018 02 02.3E	118.21° (IDU LOC)	10.93 DME IDU
SDF LOC only	42 35 01.7N 018 12 41.9E	118.21° (IDU LOC)	2.01 DME IDU
MAPt LOC only (MM)	42 34 27.81N 018 14 08.83E	118.21° (IDU LOC)	0.80 DME IDU

STANDARD DEPARTURE CHART  
INSTRUMENT (SID) - ICAO

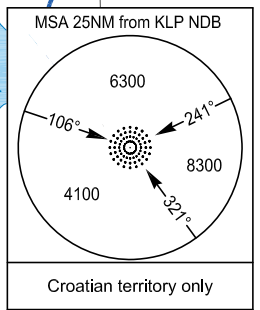
TRANSITION ALTITUDE  
10 000

DUBROVNIK ATIS	118 425
DUBROVNIK TOWER	129 500
DUBROVNIK DELIVERY	125 400
DUBROVNIK RADAR	123 600

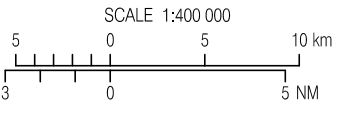
DUBROVNIK / Ruder Bošković (LDDU)  
NERRA 1B RWY 11

**RADIO COMMUNICATION FAILURE:**  
SQUAWK A7600. MAINTAIN LAST ASSIGNED LEVEL FOR 2 MINUTES, THEN CLIMB TO FPL CRUISING LEVEL. AIRCRAFT UNDER VECTORING SHALL, AFTER SETTING TRANSPONDER TO A7600, PROCEED IN THE MOST DIRECT MANNER POSSIBLE TO REJOIN THE FPL ROUTE NO LATER THAN THE NEXT SIGNIFICANT POINT, CLIMBING TO THE FPL CRUISING LEVEL AND TAKING INTO CONSIDERATION THE APPLICABLE MNM FLIGHT ALT.

- NOTES:**
1. Caution: Close-in obstacle (trees and buildings) right of the centerline up to 150 ft above DER, up to 0.8 NM from DER. (REF AIP AD 2.10)
  2. DUBROVNIK DELIVERY SERVICE (125,400 MHz) defined in ATIS. If no contact on DELIVERY, contact DUBROVNIK TOWER on 129,500 MHz.
  3. After take-off climb initially 8000 ft AMSL.
  4. Unless otherwise instructed, after passing 3000 ft contact DUBROVNIK RADAR on 123,600 MHz.



BEARINGS, TRACKS AND RADIALS ARE MAGNETIC  
ALTITUDES AND ELEVATIONS IN FT  
DISTANCES IN NM

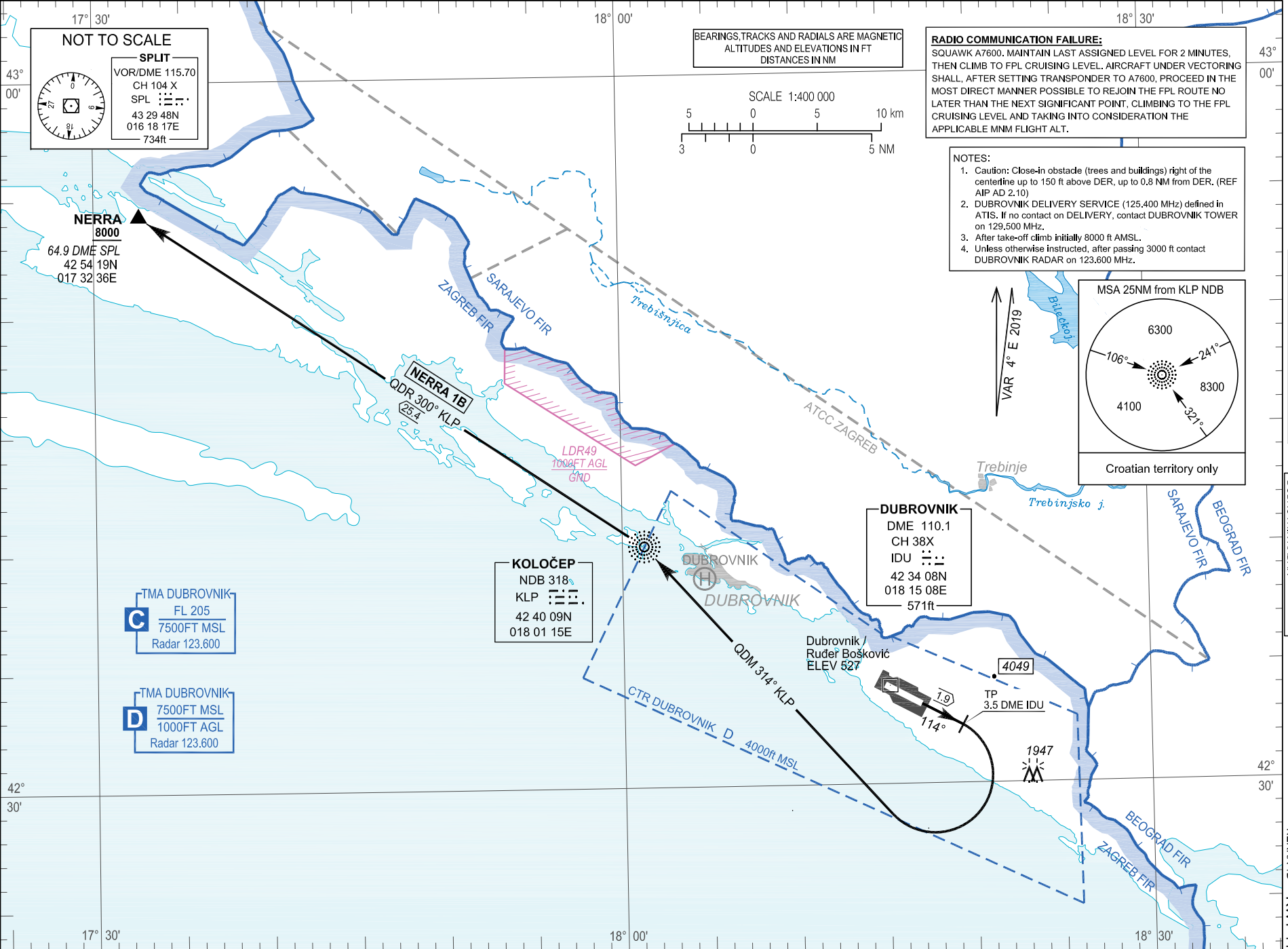


**NOT TO SCALE**

**SPLIT**  
VOR/DME 115.70  
CH 104 X  
SPL

43 29 48N  
016 18 17E  
734ft

CHANGE: Due to DBK VOR/DME U/S the new SID NERRA 1B temporarily in use.



DUBROVNIK / Ruđer Bošković (LDDU)

RWY 11      NERRA 1B

SID RWY 11				
Designator	Route	After take-off		Remarks
		Climb initially	Contact	
<b>NERRA 1B</b>	<b>NERRA ONE BRAVO DEPARTURE</b> MNM PDG 5.0% (304 ft/NM) up to 2300 ft. Climb straight ahead. At 3.5 DME IDU, turn RIGHT to intercept QDM 314° KLP climbing to KLP NDB. At KLP NDB, turn LEFT and continue climbing on QDR 300° KLP to NERRA.	8000 ft	After passing 3000 ft AMSL, contact Dubrovnik Radar on 123.600 MHZ.	Cross NERRA at 8000 ft or above.

CHANGE: Due to DBK VOR/DME U/S the new SID NERRA 1B temporarily in use.

STANDARD DEPARTURE CHART  
INSTRUMENT (SID) - ICAO

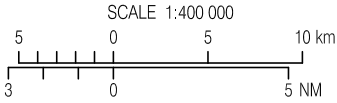
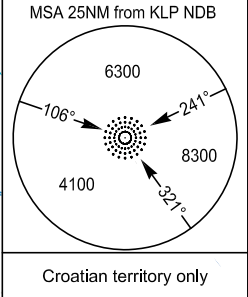
TRANSITION ALTITUDE  
10 000

DUBROVNIK ATIS 118.425  
DUBROVNIK TOWER 129.500  
DUBROVNIK DELIVERY 125.400  
DUBROVNIK RADAR 123.600

DUBROVNIK / Ruder Bošković (LDDU)  
NERRA-2D RWY 29

**RADIO COMMUNICATION FAILURE:**  
SQUAWK A7600. MAINTAIN LAST ASSIGNED LEVEL FOR 2 MINUTES, THEN CLIMB TO FPL CRUISING LEVEL. AIRCRAFT UNDER VECTORING SHALL, AFTER SETTING TRANSPONDER TO A7600, PROCEED IN THE MOST DIRECT MANNER POSSIBLE TO REJOIN THE FPL ROUTE NO LATER THAN THE NEXT SIGNIFICANT POINT, CLIMBING TO THE FPL CRUISING LEVEL AND TAKING INTO CONSIDERATION THE APPLICABLE MNM FLIGHT ALT.

- NOTES:
- Caution: Close-in obstacles (trees, buildings and terrain) left and right of the centerline up to 120 ft above DER, up to 0.3 NM from DER. (REF AIP AD 2.10)
  - DUBROVNIK DELIVERY SERVICE (125.400 MHz) defined in ATIS. If no contact on DELIVERY, contact DUBROVNIK TOWER on 129.500 MHz.
  - After take-off climb initially 8000 ft AMSL
  - Unless otherwise instructed, after passing 3000 ft contact DUBROVNIK RADAR on 123.600 MHz.



BEARINGS, TRACKS AND RADIALS ARE MAGNETIC  
ALTITUDES AND ELEVATIONS IN FT  
DISTANCES IN NM

CHANGE: Due to DBK VOR/DME U/S the new SID NERRA 2D temporarily in use.

NOT TO SCALE

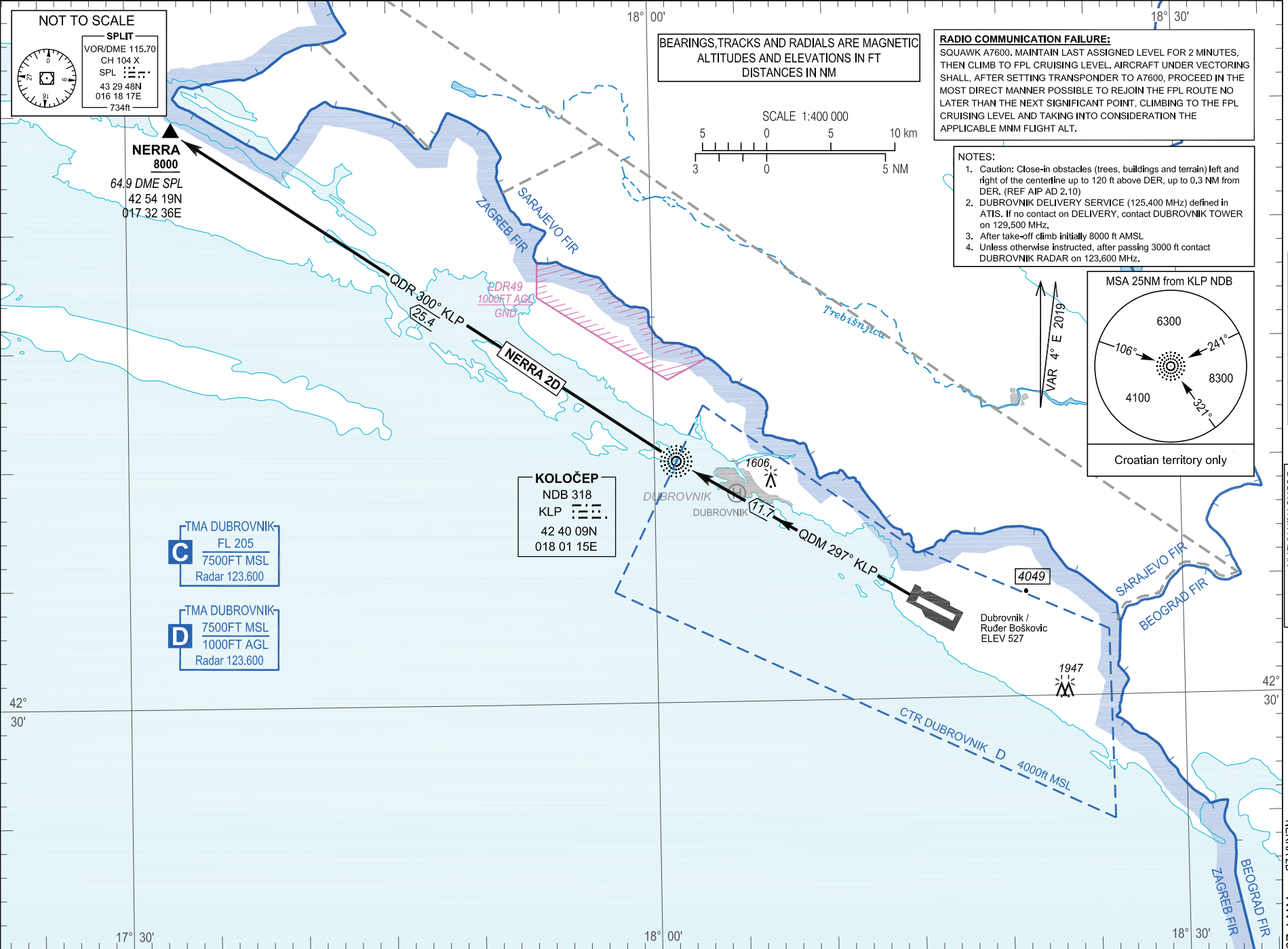
**SPLIT**  
VOR/DME 115.70  
CH 104 X  
SPL : : : :  
43 29 48N  
016 18 17E  
734ft

**NERRA**  
8000  
64.9 DME SPL  
42 54 19N  
017 32 36E

**KOLOČEP**  
NDB 318  
KLP : : : :  
42 40 09N  
018 01 15E

**C** TMA DUBROVNIK  
FL 205  
7500FT MSL  
Radar 123.600

**D** TMA DUBROVNIK  
7500FT MSL  
1000FT AGL  
Radar 123.600



DUBROVNIK / Ruđer Bošković (LDDU)

RWY 29      NERRA 2D

SID RWY 29				
Designator	Route	After take-off		Remarks
		Climb initially	Contact	
NERRA 2D	<b>NERRA TWO DELTA DEPARTURE</b> Climb to KLP NDB on QDM 297° KLP. At KLP NDB continue on QDR 300° KLP to NERRA.	8000 ft	After passing 3000 ft AMSL, contact Dubrovnik Radar on 123.600 MHZ.	Cross NERRA at 8000 ft or above.

CHANGE: Due to DBK YOR/DME U/S the new SID NERRA 2D temporarily in use.



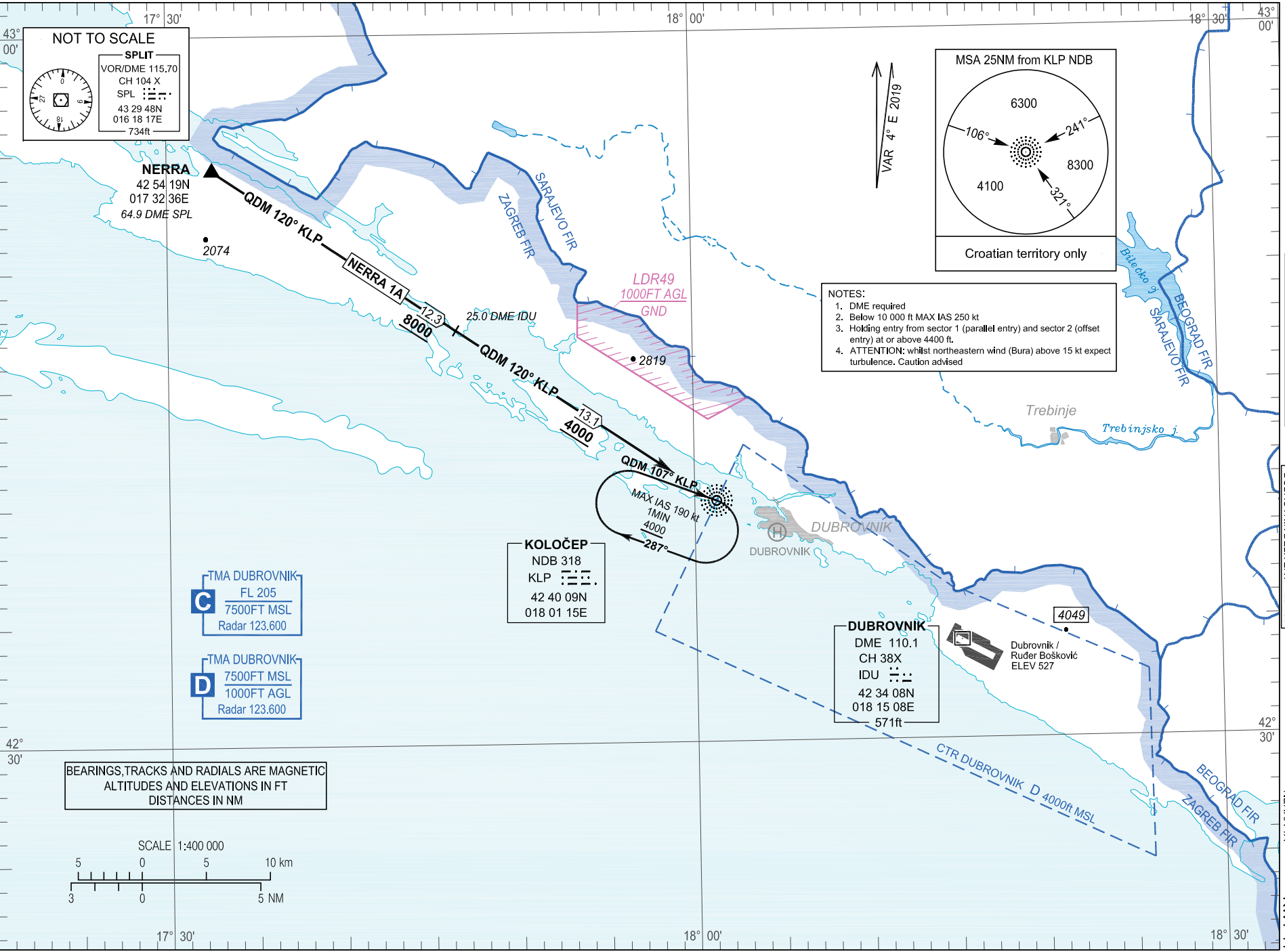
STANDARD ARRIVAL CHART  
INSTRUMENT (STAR) - ICAO

TRANSITION ALTITUDE  
10 000

DUBROVNIK ATIS 118.425  
DUBROVNIK RADAR 123.600  
DUBROVNIK TOWER 129.200  
DUBROVNIK DELIVERY 125.400

DUBROVNIK / Ruder Bošković (LDDU)  
RWY 11

CHANGE: Due to DBK VOR/DME U/S the new STAR NERRA 1A temporarily in use.



DUBROVNIK / Ruđer Bošković (LDDU)

RWY 11      NERRA 1A

**LDDU STAR RWY 11**

Designator	Route	Descend	Contact	Remarks
<b>NERRA 1A</b>	<b>NERRA ONE ALPHA ARRIVAL</b> From NERRA proceed on QDM 120° KLP (MNM ALT 8000 ft). At 25.0 DME IDU proceed on QDM 120°T KLP (MNM ALT 4000 ft) to KLP NDB and hold.	As cleared by ATC		

CHANGE: Due to DBK VOR/DME U/S the new STAR NERRA 1A temporarily in use.