

Phone: +385 1 6259 373
+385 1 6259 589
+385 1 6259 372
+385 1 6259 381

AFS: LDZAYOYX

Email: aip@crocontrol.hr

URL: <https://www.crocontrol.hr>



Croatia Control Ltd.
AIM/AIS Service
Rudolfa Fizira 2
10410 Velika Gorica, PO Box 103
Croatia

AIRAC AIP SUP 007/2024

Effective Date: 03-Oct-2024

End Date: UFN

Publication Date: 22-Aug-2024

LDDU - DUBROVNIK/Rudjer Boskovic Airport - Trial instrument flight procedures

This AIRAC AIP SUP contains following trial instrument procedures:

- SID RNAV RWY 11 (LDDU AD 2.24.8 SID RNAV RWY 11);
- SID RNAV RWY 29 (LDDU AD 2.24.8 SID RNAV RWY 29);
- STAR RNAV RWY 11 (LDDU AD 2.24.10 STAR RNAV RWY 11);
- STAR RNAV RWY 29 (LDDU AD 2.24.10 STAR RNAV RWY 29).

The procedures shall be used only for flight validation purpose by Croatia Control Ltd. approved operator and according to Dubrovnik ATC clearance.

Record entry of AIRAC AIP SUP 007/2024 in GEN 0.3

REF AIP: LDDU AD 2

THIS PAGE INTENTIONALLY LEFT BLANK

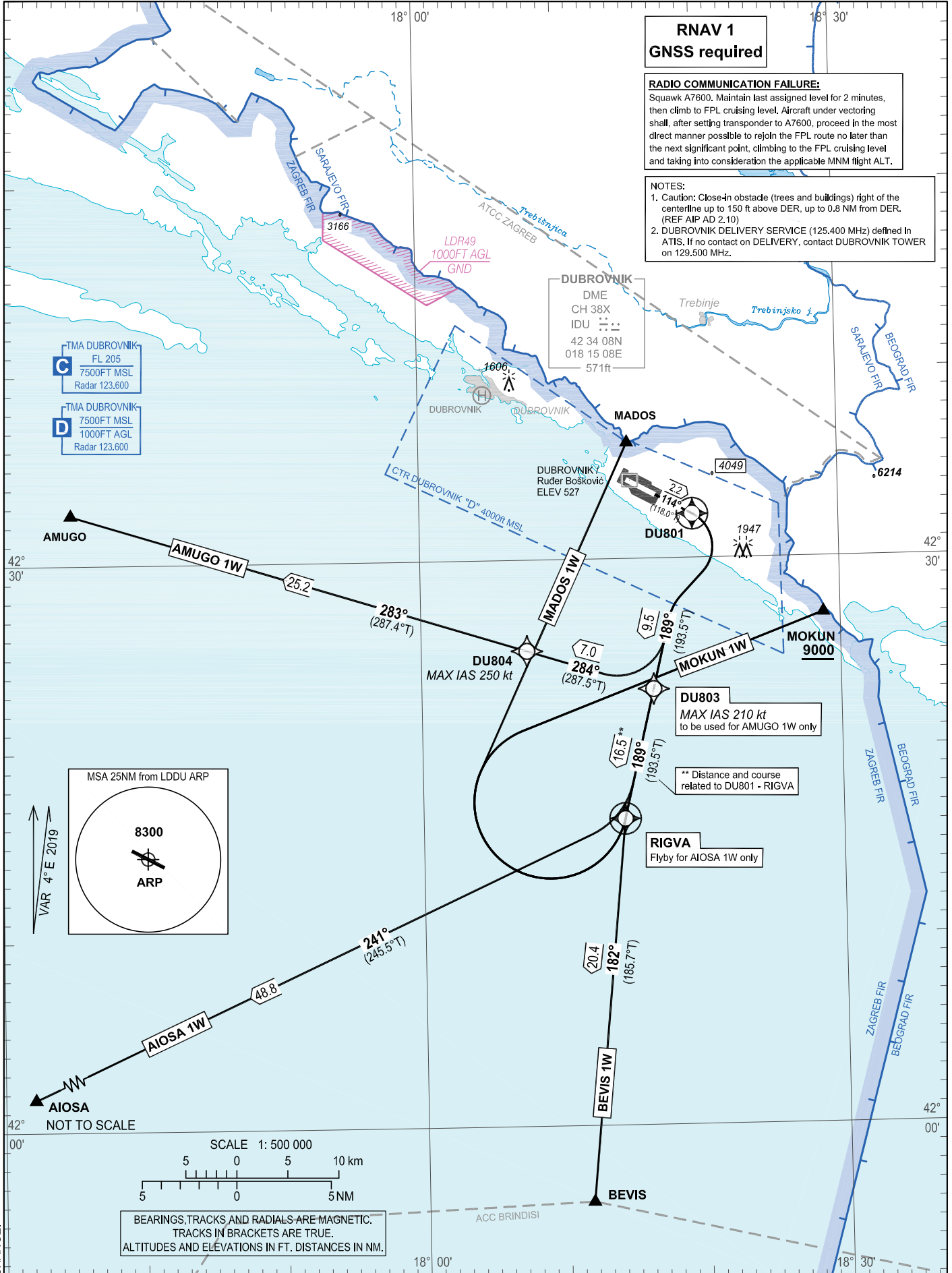
STANDARD DEPARTURE CHART
INSTRUMENT (SID) - ICAO

TRANSITION ALTITUDE
10 000

DUBROVNIK ATIS	118.425
DUBROVNIK TOWER	129.500
DUBROVNIK RADAR	123.600
DUBROVNIK DELIVERY	125.400

DUBROVNIK / Ruder Bošković (LDDU)

MOKUN 1W BEVIS 1W AIOSA 1W
AMUGO 1W MADOS 1W RNAV RWY 11



CHANGE:

DUBROVNIK / Ruđer Bošković (LDDU)

MOKUN 1W BEVIS 1W AIOSA 1W
RNAV RWY 11 AMUGO 1W MADOS 1W

GENERAL INFORMATION AND REQUIREMENTS FOR ALL SIDs

- MNM PDG 5.0 per cent (304 FT/NM) up to 2300 ft.
- After take-off climb initially 8000 ft AMSL.
- Unless otherwise instructed, after passing 3000 ft contact DUBROVNIK RADAR on 123.600 MHz.

LDDU RNAV STANDARD INSTRUMENT DEPARTURE RWY 11

Proposed tabular description for navigation database coding

Serial number	Route	Path descriptor	Waypoint name	Flyover	Course	Magnetic variation	Distance (NM)	Turn direction	Altitude (ft)	Speed (kt)	Remarks	NAV SPEC							
					°M (°T)														
010	MOKUN 1W	CF	DU801	Y	114°	4°E	2.2	-	-	-	-	RNAV 1							
					(118.0°T)														
020					RIGVA								Y	189°	4°E	16.5	-	-	-
	(193.5°T)																		
030	DF	MOKUN	-	-	4°E	-	R	+9000	-										
010	BEVIS 1W	CF	DU801	Y	114°	4°E	2.2	-	-	-	-	RNAV 1							
					(118.0°T)														
020					RIGVA								Y	189°	4°E	16.5	-	-	-
	(193.5°T)																		
030	TF	BEVIS	-	182°	4°E	20.4	-	-	-										
					(185.7°T)														
010	AIOSA 1W	CF	DU801	Y	114°	4°E	2.2	-	-	-	-	RNAV 1							
					(118.0°T)														
020					RIGVA								-	189°	4°E	16.5	-	-	-
	(193.5°T)																		
030	TF	AIOSA	-	241°	4°E	48.8	-	-	-										
					(245.5°T)														
010	AMUGO 1W	CF	DU801	Y	114°	4°E	2.2	-	-	-	-	RNAV 1							
					(118.0°T)														
020					DU803								-	189°	4°E	9.5	-	-	-210
														(193.5°T)					
030	DU804	-	284°	4°E	7.0	R	-	-250											
			(287.5°T)																
040	TF	AMUGO	-	283°	4°E	25.2	-	-											
					(287.4°T)														
010	MADOS 1W	CF	DU801	Y	114°	4°E	2.2	-	-	-	-	RNAV 1							
					(118.0°T)														
020					RIGVA								Y	189°	4°E	16.5	-	-	-
	(193.5°T)																		
030	DF	MADOS	-	-	4°E	-	R	-	-										

CHANGE:

Waypoint coordinates		
Waypoint name	WGS-84 latitude	WGS-84 longitude
AIOSA	415542N	0171454E
AMUGO	423239N	0173502E
BEVIS	415558N	0181140E
MADOS	423609N	0181457E
MOKUN	422701N	0182848E
RIGVA	421613.8N	0181421.6E
DU801	423219.1N	0181933.3E
DU802	422109.3N	0181531.3E
DU804	422510.7N	0180733.1E

CHANGE:

OVA STRANICA JE NAMJERNO OSTAVLJENA PRAZNA
THIS PAGE INTENTIONALLY LEFT BLANK

STANDARD DEPARTURE CHART
INSTRUMENT (SID) - ICAO

TRANSITION ALTITUDE
10 000

DUBROVNIK ATIS	118.425
DUBROVNIK TOWER	129.500
DUBROVNIK RADAR	123.600
DUBROVNIK DELIVERY	125.400

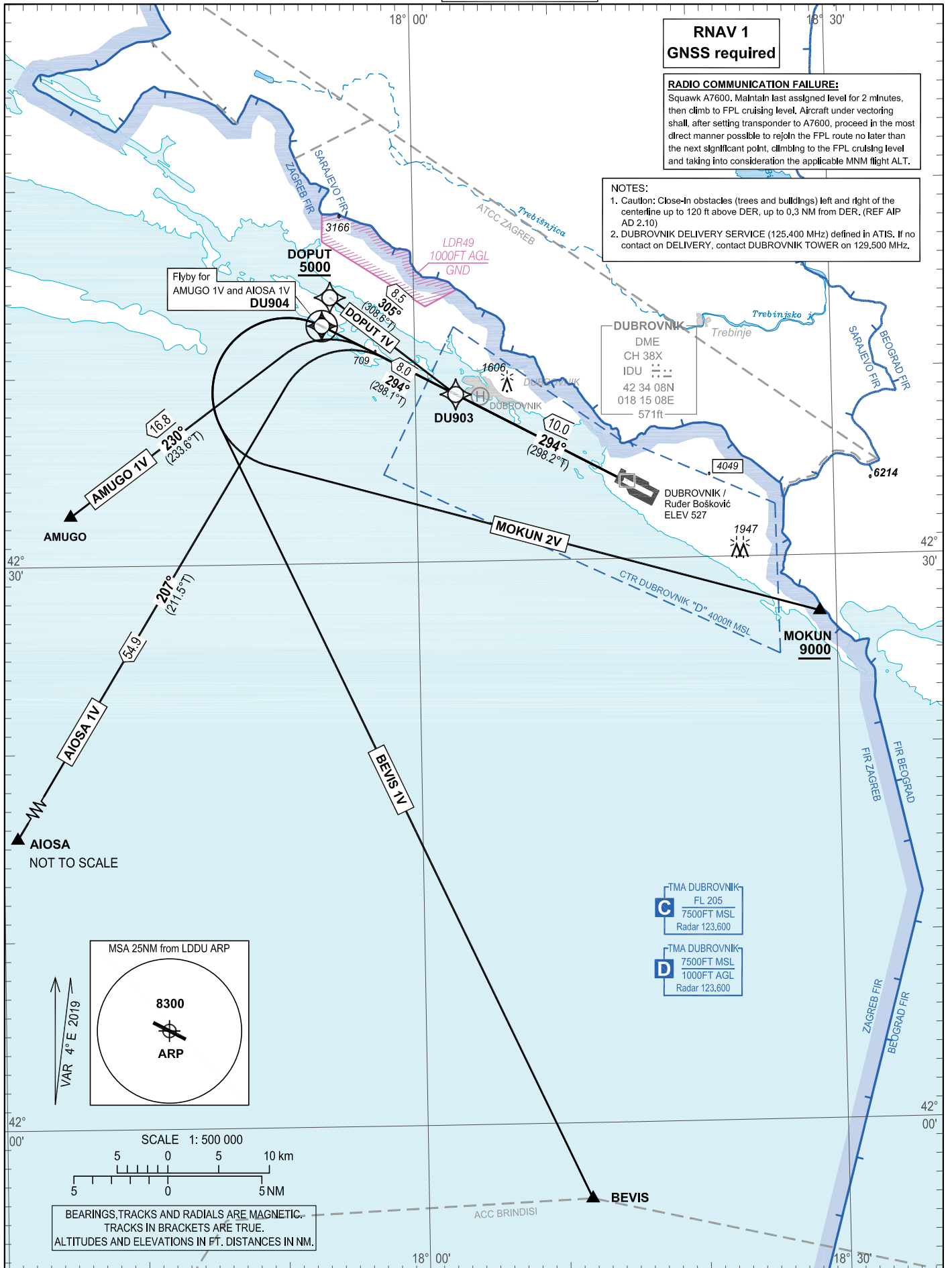
DUBROVNIK / Ruder Bošković (LDDU)

DOPUT 1V AMUGO 1V AIOSA 1V
BEVIS 1V MOKUN 2V RNAV RWY 29

RNAV 1
GNSS required

RADIO COMMUNICATION FAILURE:
Squawk A7600. Maintain last assigned level for 2 minutes, then climb to FPL cruising level. Aircraft under vectoring shall, after setting transponder to A7600, proceed in the most direct manner possible to rejoin the FPL route no later than the next significant point, climbing to the FPL cruising level and taking into consideration the applicable MNM flight ALT.

NOTES:
1. Caution: Close-In obstacles (trees and buildings) left and right of the centerline up to 120 ft above DER, up to 0.3 NM from DER. (REF AIP AD 2.10)
2. DUBROVNIK DELIVERY SERVICE (125.400 MHz) defined in ATIS. If no contact on DELIVERY, contact DUBROVNIK TOWER on 129.500 MHz.



DUBROVNIK / Ruđer Bošković (LDDU)

DOPUT 1V AMUGO 1V AIOSA 1V
RNAV RWY 29 BEVIS 1V MOKUN 2V

GENERAL INFORMATION AND REQUIREMENTS FOR ALL SIDs

- After take-off climb initially 8000 ft AMSL.

- Unless otherwise instructed, after passing 3000 ft contact DUBROVNIK RADAR on 123.600 MHz.

LDDU RNAV STANDARD INSTRUMENT DEPARTURE RWY 29

Proposed tabular description for navigation database coding

Serial number	Route	Path descriptor	Waypoint name	Flyover	Course °M (°T)	Magnetic variation	Distance (NM)	Turn direction	Altitude (ft)	Speed (kt)	Remarks	NAV SPEC
010	DOPUT 1V	CF	DU903	-	294° (298.2°T)	4°E	10.0	-	-	-	On ATC authorization only. Expect further climb and radar vectoring to en-route transition point filed in FPL.	RNAV 1
020		TF	DOPUT	-	305° (308.6°T)	4°E	8.5	-	+5000	-		
010	AMUGO 1V	CF	DU903	-	294° (298.2°T)	4°E	10.0	-	-	-	-	RNAV 1
020		TF	DU904	-	294° (298.1°T)	4°E	8.0	-	-	-		
030		TF	AMUGO	-	230° (233.6°T)	4°E	16.8	-	-	-		
010	AIOSA 1V	CF	DU903	-	294° (298.2°T)	4°E	10.0	-	-	-	-	RNAV 1
020		TF	DU904	-	294° (298.1°T)	4°E	8.0	-	-	-		
030		TF	AIOSA	-	207° (211.5°T)	4°E	54.9	-	-	-		
010	BEVIS 1V	CF	DU903	-	294° (298.2°T)	4°E	10.0	-	-	-	-	RNAV 1
020		CF	DU904	Y	294° (298.1°T)	4°E	8.0	-	-	-		
030		DF	BEVIS	-	- -	4°E	-	L	-	-		
010	MOKUN 2V	CF	DU903	-	294° (298.2°T)	4°E	10.0	-	-	-	-	RNAV 1
020		CF	DU904	Y	294° (298.1°T)	4°E	8.0	-	-	-		
030		DF	MOKUN	-	- -	4°E	-	L	+9000	-		

Waypoint coordinates

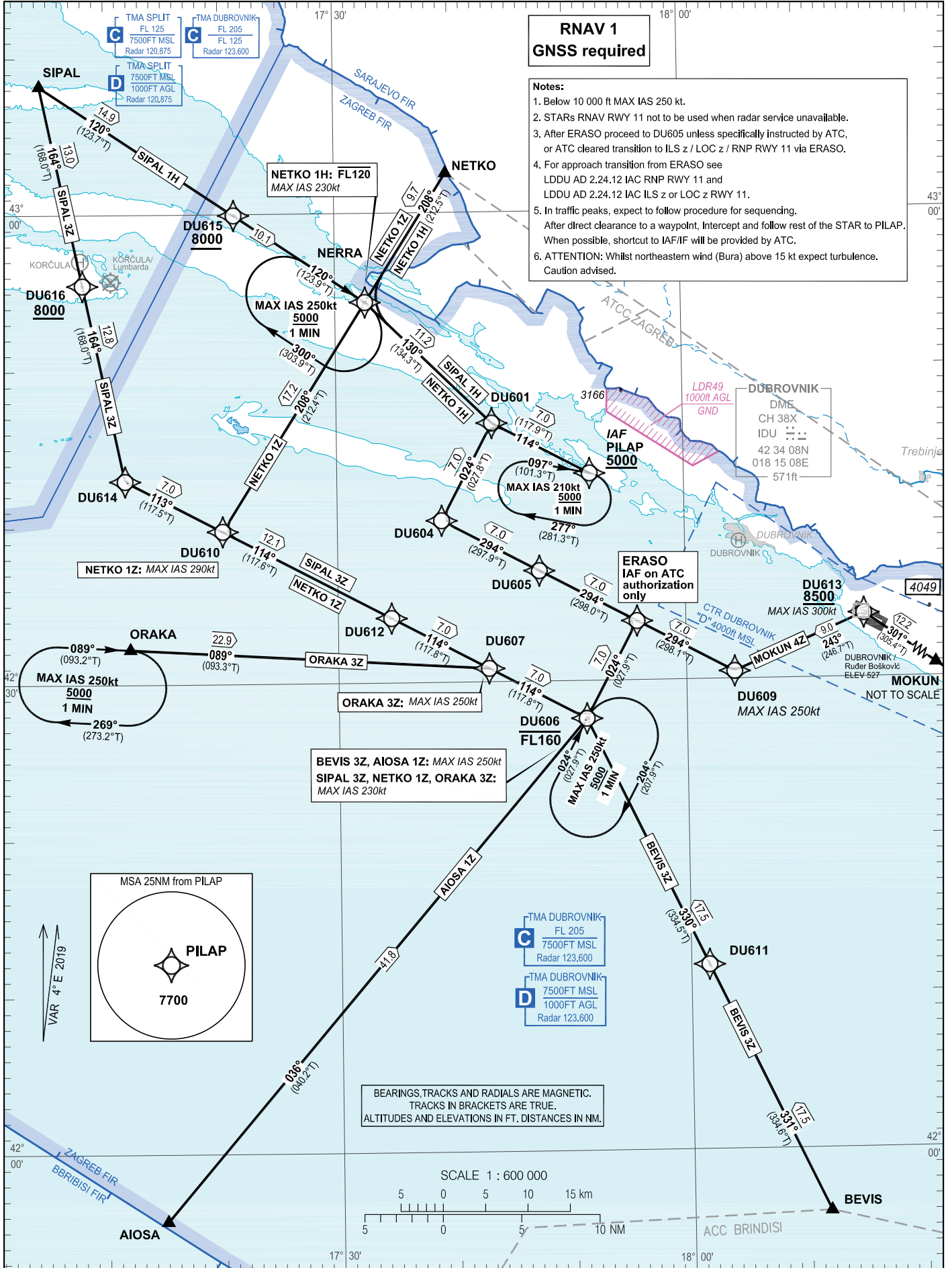
Waypoint name	WGS-84 latitude	WGS-84 longitude
AIOSA	415542N	0171454E
BEVIS	415558N	0181140E
AMUGO	423239N	0173502E
DOPUT	424409.5N	0175356.8E
MOKUN	422701N	0182848E
DU903	423853.6N	0180254.6E
DU904	424239.2N	0175320.1E

STANDARD ARRIVAL CHART
INSTRUMENT (STAR) - ICAO

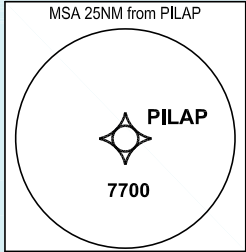
TRANSITION ALTITUDE
10 000

DUBROVNIK ATIS	118.425
DUBROVNIK RADAR	123.600
DUBROVNIK TOWER	129.500
DUBROVNIK DELIVERY	125.400

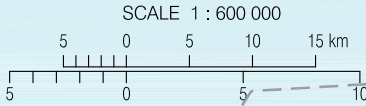
DUBROVNIK / Ruđer Bošković (LDDU)
SIPAL 3Z SIPAL 1H NETKO 1Z NETKO 1H
MOKUN 4Z BEVIS 3Z AIOSA 1Z ORAKA 3Z RNAV RYW 11



- Notes:**
- Below 10 000 ft MAX IAS 250 kt.
 - STARs RNAV RYW 11 not to be used when radar service unavailable.
 - After ERASO proceed to DU605 unless specifically instructed by ATC, or ATC cleared transition to ILS z / LOC z / RNP RYW 11 via ERASO.
 - For approach transition from ERASO see LDDU AD 2.24.12 IAC RNP RYW 11 and LDDU AD 2.24.12 IAC ILS z or LOC z RYW 11.
 - In traffic peaks, expect to follow procedure for sequencing. After direct clearance to a waypoint, intercept and follow rest of the STAR to PILAP. When possible, shortcut to IAF/IF will be provided by ATC.
 - ATTENTION: Whilst northeastern wind (Bura) above 15 kt expect turbulence. Caution advised.



BEARINGS, TRACKS AND RADIALS ARE MAGNETIC.
TRACKS IN BRACKETS ARE TRUE.
ALTITUDES AND ELEVATIONS IN FT. DISTANCES IN NM.



CHANGE:

DUBROVNIK / Ruđer Bošković (LDDU)

SIPAL 3Z SIPAL 1H NETKO 1Z NETKO 1H
RNAV RWY 11 MOKUN 4Z BEVIS 3Z AIOSA 1Z ORAKA 3Z

NOTES:

1. IAF on ATC authorization only: For APPROACH TRANSITION from ERASO see LDDU AD 2.24.12 IAC RNP RWY 11 and LDDU AD 2.24. IAC ILS z or LOC z RWY 11.

LDDU RNAV STANDARD ARRIVAL RWY 11

Proposed tabular description for navigation database coding

Serial number	Route	Path descriptor	Waypoint name	Flyover	Course °M (°T)	Magnetic variation	Distance (NM)	Turn direction	Altitude (ft)	Speed (kt)	Remarks	NAV SPEC
010	SIPAL 3Z	IF	SIPAL	-	-	4°E	-	-	-	-	-	RNAV 1
020		TF	DU616	-	164° (168.0°T)	4°E	13.0	-	+8000	-	-	
030		TF	DU614	-	164° (168.0°T)	4°E	12.8	-	-	-	-	
040		TF	DU610	-	113° (117.5°T)	4°E	7.0	-	-	-	-	
050		TF	DU612	-	114° (117.6°T)	4°E	12.1	-	-	-	-	
060		TF	DU607	-	114° (117.8°T)	4°E	7.0	-	-	-	-	
070		TF	DU606	-	114° (117.8°T)	4°E	7.0	-	-FL160	-230	-	
080		TF	ERASO	-	024° (027.9°T)	4°E	7.0	L	-	-	IAF on ATC authorization only	
090		TF	DU605	-	294° (298.0°T)	4°E	7.0	L	-	-	-	
100		TF	DU604	-	294° (297.9°T)	4°E	7.0	-	-	-	-	
110		TF	DU601	-	024° (027.8°T)	4°E	7.0	R	-	-	-	
120		TF	PILAP	-	114° (117.9°T)	4°E	7.0	R	+5000	-	IAF	
010	SIPAL 1H	IF	SIPAL	-	-	4°E	-	-	-	-	-	RNAV 1
020		TF	DU615	-	120° (123.7°T)	4°E	14.9	-	+8000	-	-	
030		TF	NERRA	-	120° (123.9°T)	4°E	10.1	-	-	-	-	
040		TF	DU601	-	130° (134.3°T)	4°E	11.2	-	-	-	-	
050		TF	PILAP	-	114° (117.9°T)	4°E	7.0	-	+5000	-	IAF	

CHANGE:

Serial number	Route	Path descriptor	Waypoint name	Flyover	Course °M (°T)	Magnetic variation	Distance (NM)	Turn direction	Altitude (ft)	Speed (kt)	Remarks	NAV SPEC
010	NETKO 1Z	IF	NETKO	-	-	4°E	-	-	-	-	-	RNAV 1
020		TF	NERRA	-	208° (212.5°T)	4°E	9.7	-	-	-	-	
030		TF	DU610	-	208° (212.4°T)	4°E	17.2	-	-	-290	-	
040		TF	DU612	-	114° (117.6°T)	4°E	12.1	L	-	-	-	
050		TF	DU607	-	114° (117.8°T)	4°E	7.0	-	-	-	-	
060		TF	DU606	-	114° (117.8°T)	4°E	7.0	-	-FL160	-230	-	
070		TF	ERASO	-	024° (027.9°T)	4°E	7.0	L	-	-	IAF on ATC authorization only	
080		TF	DU605	-	294° (298.0°T)	4°E	7.0	L	-	-	-	
090		TF	DU604	-	294° (297.9°T)	4°E	7.0	-	-	-	-	
100		TF	DU601	-	024° (027.8°T)	4°E	7.0	R	-	-	-	
110		TF	PILAP	-	114° (117.9°T)	4°E	7.0	R	+5000	-	IAF	
010	NETKO 1H	IF	NETKO	-	-	4°E	-	-	-	-	-	RNAV 1
020		TF	NERRA	-	208° (212.5°T)	4°E	9.7	-	-FL120	-230	-	
030		TF	DU601	-	130° (134.3°T)	4°E	11.2	-	-	-	-	
040		TF	PILAP	-	114° (117.9°T)	4°E	7.0	-	+5000	-	IAF	
010	MOKUN 4Z	IF	MOKUN	-	-	4°E	-	-	-	-	-	RNAV 1
020		TF	DU613	-	301° (305.4°T)	4°E	12.2	-	+8500	-300	-	
030		TF	DU609	-	243° (246.7°T)	4°E	9.0	-	-	-250	-	
040		TF	ERASO	-	294° (298.1°T)	4°E	7.0	-	-	-	IAF on ATC authorization only	
050		TF	DU605	-	294° (298.0°T)	4°E	7.0	-	-	-	-	
060		TF	DU604	-	294° (297.9°T)	4°E	7.0	-	-	-	-	
070		TF	DU601	-	024° (027.8°T)	4°E	7.0	R	-	-	-	
080		TF	PILAP	-	114° (117.9°T)	4°E	7.0	R	+5000	-	IAF	

CHANGE:

DUBROVNIK / Ruđer Bošković (LDDU)

SIPAL 3Z SIPAL 1H NETKO 1Z NETKO 1H
RNAV RWY 11 MOKUN 4Z BEVIS 3Z AIOSA 1Z ORAKA 3Z

Serial number	Route	Path descriptor	Waypoint name	Flyover	Course °M (°T)	Magnetic variation	Distance (NM)	Turn direction	Altitude (ft)	Speed (kt)	Remarks	NAV SPEC
010	BEVIS 3Z	IF	BEVIS	-	-	4°E	-	-	-	-	-	RNAV 1
020		TF	DU611	-	331° (334.6°T)	4°E	17.5	-	-	-	-	
030		TF	DU606	-	330° (334.5°T)	4°E	17.5	-	-FL160	-250	-	
040		TF	ERASO	-	024° (027.9°T)	4°E	7.0	-	-	-	IAF on ATC authorization only	
050		TF	DU605	-	294° (298.0°T)	4°E	7.0	L	-	-	-	
060		TF	DU604	-	294° (297.9°T)	4°E	7.0	-	-	-	-	
070		TF	DU601	-	024° (027.8°T)	4°E	7.0	R	-	-	-	
080		TF	PILAP	-	114° (117.9°T)	4°E	7.0	R	+5000	-	IAF	
010	AIOSA 1Z	IF	AIOSA	-	-	4°E	-	-	-	-	-	RNAV 1
020		TF	DU606	-	036° (040.2°T)	4°E	41.8	-	-FL160	-250	-	
030		TF	ERASO	-	024° (027.9°T)	4°E	7.0	-	-	-	IAF on ATC authorization only	
040		TF	DU605	-	294° (298.0°T)	4°E	7.0	L	-	-	-	
050		TF	DU604	-	294° (297.9°T)	4°E	7.0	-	-	-	-	
060		TF	DU601	-	024° (027.8°T)	4°E	7.0	R	-	-	-	
070		TF	PILAP	-	114° (117.9°T)	4°E	7.0	R	+5000	-	IAF	
010	ORAKA 3Z	IF	ORAKA	-	-	4°E	-	-	-	-	-	RNAV 1
020		TF	DU607	-	089° (093.3°T)	4°E	22.9	-	-	-250	-	
030		TF	DU606	-	114° (117.8°T)	4°E	7.0	-	-FL160	-230	-	
040		TF	ERASO	-	024° (027.9°T)	4°E	7.0	L	-	-	IAF on ATC authorization only	
050		TF	DU605	-	294° (298.0°T)	4°E	7.0	L	-	-	-	
060		TF	DU604	-	294° (297.9°T)	4°E	7.0	-	-	-	-	
070		TF	DU601	-	024° (027.8°T)	4°E	7.0	R	-	-	-	
080		TF	PILAP	-	114° (117.9°T)	4°E	7.0	R	+5000	-	IAF	

CHANGE

RNAV HOLDING tabular description

Waypoint name	Path descriptor	Inbound course °M (°T)	Leg time/ Distance (NM)	Turn direction	Minimum altitude (ft)	Maximum altitude (ft)	Speed limit MAX IAS (kt)	Magnetic variation	Remarks	NAV SPEC
PILAP	HM	097° (101.3°T)	1 MIN / -	R	5000	-	210	4°E	-	RNAV 1
NERRA	HM	120° (123.9°T)	1 MIN / -	R	5000	-	250	4°E	-	RNAV 1
ORAKA	HM	089° (093.2°T)	1 MIN / -	R	5000	-	250	4°E	-	RNAV 1
DU606	HM	024° (027.9°T)	1 MIN / -	R	5000	-	250	4°E	-	RNAV 1

Waypoint coordinates

Waypoint name	WGS-84 latitude	WGS-84 longitude
AIOSA	415542N	0171454E
BEVIS	415558N	0181140E
ERASO	423345.7N	0175547.1E
MOKUN	422701N	0182848E
NERRA	425418.5N	0173236.3E
NETKO	430230N	0173942E
ORAKA	423213N	0171202E
PILAP	424313.8N	0175151.5E
SIPAL	430812N	0170425E
DU601	424630.5N	0174327.6E
DU604	424018.9N	0173901.6E
DU605	423702.6N	0174724.8E
DU606	422734.5N	0175120.8E
DU607	423051.1N	0174259.0E
DU609	423028.1N	0180408.6E
DU610	423944.6N	0172005.2E
DU611	421146.7N	0180132.9E
DU612	423407.1N	0173436.4E
DU613	423403.53N	0181521.99E
DU614	424258.6N	0171140.9E
DU615	425955.6N	0172115.3E
DU616	425528.5N	0170805.4E

CHANGE:

OVA STRANICA JE NAMJERNO OSTAVLJENA PRAZNA
THIS PAGE INTENTIONALLY LEFT BLANK

STANDARD ARRIVAL CHART
INSTRUMENT (STAR) - ICAO

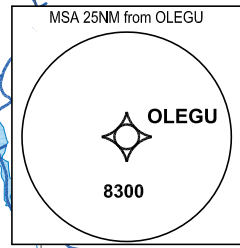
TRANSITION ALTITUDE
10 000

DUBROVNIK ATIS 118.425
DUBROVNIK RADAR 123.600
DUBROVNIK TOWER 129.500
DUBROVNIK DELIVERY 125.400

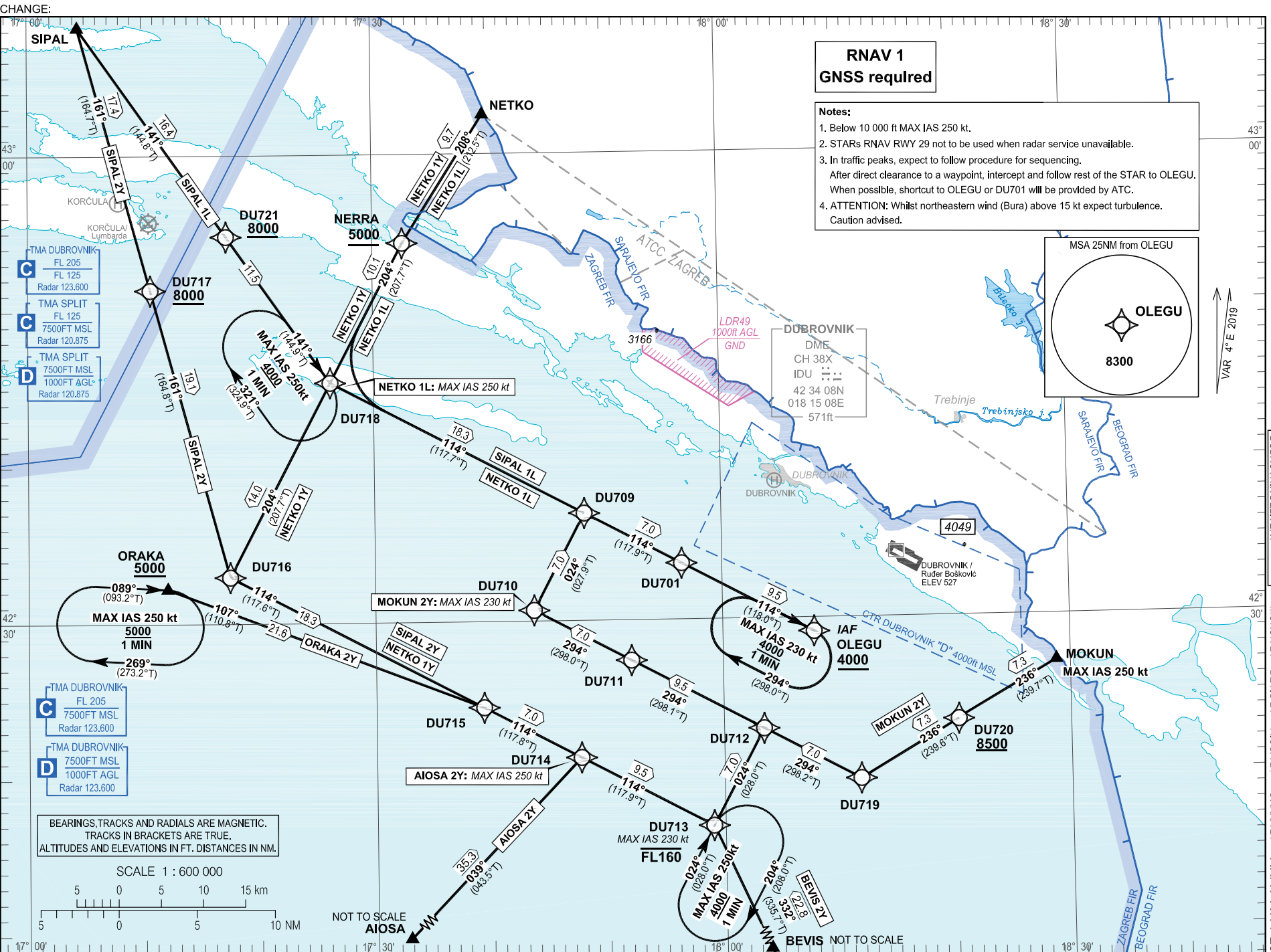
DUBROVNIK / Ruder Bošković (LDDU)
SIPAL 2Y SIPAL 1L NETKO 1Y NETKO 1L
MOKUN 2Y BEVIS 2Y AIOISA 2Y ORAKA 2Y RNAV RWY 29

**RNAV 1
GNSS required**

- Notes:**
- Below 10 000 ft MAX IAS 250 kt.
 - STARs RNAV RWY 29 not to be used when radar service unavailable.
 - In traffic peaks, expect to follow procedure for sequencing.
After direct clearance to a waypoint, intercept and follow rest of the STAR to OLEGU.
When possible, shortcut to OLEGU or DU701 will be provided by ATC.
 - ATTENTION: Whilst northeastern wind (Bura) above 15 kt expect turbulence.
Caution advised.



VAR 4° E 2019

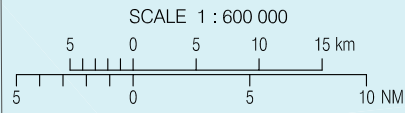


CHANGE:

© Hrvatska kontrola zračne plovidbe d.o.o.
© Croatia Control Ltd.

AIRAC AIP SUP 007/2024

BEARINGS, TRACKS AND RADIALS ARE MAGNETIC.
TRACKS IN BRACKETS ARE TRUE.
ALTITUDES AND ELEVATIONS IN FT. DISTANCES IN NM.



NOT TO SCALE
AIOISA

NOT TO SCALE
BEVIS

DUBROVNIK / Ruđer Bošković (LDDU)

RNAV RWY 29 SIPAL 2Y SIPAL 1L NETKO 1Y NETKO 1L
MOKUN 2Y BEVIS 2Y AIOSA 2Y ORAKA 2Y

LDDU RNAV STANDARD ARRIVAL RWY 29

Proposed tabular description for navigation database coding

Serial number	Route	Path descriptor	Waypoint name	Flyover	Course °M (°T)	Magnetic variation	Distance (NM)	Turn direction	Altitude (ft)	Speed (kt)	Remarks	NAV SPEC
010	SIPAL 2Y	IF	SIPAL	-	-	4°E	-	-	-	-	-	RNAV 1
020		TF	DU717	-	161° (164.7°T)	4°E	17.4	-	+8000	-	-	
030		TF	DU716	-	161° (164.8°T)	4°E	19.1	-	-	-	-	
040		TF	DU715	-	114° (117.6°T)	4°E	18.3	-	-	-	-	
050		TF	DU714	-	114° (117.8°T)	4°E	7.0	-	-	-	-	
060		TF	DU713	-	114° (117.9°T)	4°E	9.5	-	-FL160	-230	-	
070		TF	DU712	-	024° (028.0°T)	4°E	7.0	L	-	-	-	
080		TF	DU711	-	294° (298.1°T)	4°E	9.5	L	-	-	-	
090		TF	DU710	-	294° (298.0°T)	4°E	7.0	-	-	-	-	
100		TF	DU709	-	024° (027.9°T)	4°E	7.0	R	-	-	-	
110		TF	DU701	-	114° (117.9°T)	4°E	7.0	R	-	-	-	
120		TF	OLEGU	-	114° (118.0°T)	4°E	9.5	-	+4000	-	IAF	
010	SIPAL 1L	IF	SIPAL	-	-	4°E	-	-	-	-	-	RNAV 1
020		TF	DU721	-	141° (144.8°T)	4°E	16.4	-	+8000	-	-	
030		TF	DU718	-	141° (144.9°T)	4°E	11.5	-	-	-	-	
040		TF	DU709	-	114° (117.7°T)	4°E	18.3	-	-	-	-	
050		TF	DU701	-	114° (117.9°T)	4°E	7.0	-	-	-	-	
060		TF	OLEGU	-	114° (118.0°T)	4°E	9.5	-	+4000	-	IAF	

CHANGE:

Serial number	Route	Path descriptor	Waypoint name	Flyover	Course °M (°T)	Magnetic variation	Distance (NM)	Turn direction	Altitude (ft)	Speed (kt)	Remarks	NAV SPEC
010	NETKO 1Y	IF	NETKO	-	-	4°E	-	-	-	-	-	RNAV 1
020		TF	NERRA	-	208° (212.5°T)	4°E	9.7	-	+5000	-	-	
030		TF	DU718	-	204° (207.7°T)	4°E	10.1	-	-	-	-	
040		TF	DU716	-	204° (207.7°T)	4°E	14.0	-	-	-	-	
050		TF	DU715	-	114° (117.6°T)	4°E	18.3	L	-	-	-	
060		TF	DU714	-	114° (117.8°T)	4°E	7.0	-	-	-	-	
070		TF	DU713	-	114° (117.9°T)	4°E	9.5	-	-FL160	-230	-	
080		TF	DU712	-	024° (028.0°T)	4°E	7.0	L	-	-	-	
090		TF	DU711	-	294° (298.1°T)	4°E	9.5	L	-	-	-	
100		TF	DU710	-	294° (298.0°T)	4°E	7.0	-	-	-	-	
110		TF	DU709	-	024° (027.9°T)	4°E	7.0	R	-	-	-	
120		TF	DU701	-	114° (117.9°T)	4°E	7.0	R	-	-	-	
130		TF	OLEGU	-	114° (118.0°T)	4°E	9.5	-	+4000	-	IAF	
010	NETKO 1L	IF	NETKO	-	-	4°E	-	-	-	-	-	RNAV 1
020		TF	NERRA	-	208° (212.5°T)	4°E	9.7	-	-	-	-	
030		TF	DU718	-	204° (207.7°T)	4°E	10.1	-	-	-250	-	
040		TF	DU709	-	114° (117.7°T)	4°E	18.3	L	-	-	-	
050		TF	DU701	-	114° (117.9°T)	4°E	7.0	-	-	-	-	
060		TF	OLEGU	-	114° (118.0°T)	4°E	9.5	-	+4000	-	IAF	

CHANGE:

DUBROVNIK / Ruđer Bošković (LDDU)

SIPAL 2Y SIPAL 1L NETKO 1Y NETKO 1L
RNAV RWY 29 MOKUN 2Y BEVIS 2Y AIOGA 2Y ORAKA 2Y

Serial number	Route	Path descriptor	Waypoint name	Flyover	Course °M (°T)	Magnetic variation	Distance (NM)	Turn direction	Altitude (ft)	Speed (kt)	Remarks	NAV SPEC
010	MOKUN 2Y	IF	MOKUN	-	-	4°E	-	-	-	-250	-	RNAV 1
020		TF	DU720	-	236° (239.7°T)	4°E	7.3	-	+8500	-	-	
030		TF	DU719	-	236° (239.6°T)	4°E	7.3	-	-	-	-	
040		TF	DU712	-	294° (298.2°T)	4°E	7.0	-	-	-	-	
050		TF	DU711	-	294° (298.1°T)	4°E	9.5	-	-	-	-	
060		TF	DU710	-	294° (298.0°T)	4°E	7.0	-	-	-230	-	
070		TF	DU709	-	024° (027.9°T)	4°E	7.0	R	-	-	-	
080		TF	DU701	-	114° (117.9°T)	4°E	7.0	R	-	-	-	
090		TF	OLEGU	-	114° (118.0°T)	4°E	9.5	-	+4000	-	IAF	
010	BEVIS 2Y	IF	BEVIS	-	-	4°E	-	-	-	-	-	RNAV 1
020		TF	DU713	-	332° (335.7°T)	4°E	22.8	-	-FL160	-230	-	
030		TF	DU712	-	024° (028.0°T)	4°E	7.0	-	-	-	-	
040		TF	DU711	-	294° (298.1°T)	4°E	9.5	L	-	-	-	
050		TF	DU710	-	294° (298.0°T)	4°E	7.0	-	-	-	-	
060		TF	DU709	-	024° (027.9°T)	4°E	7.0	R	-	-	-	
070		TF	DU701	-	114° (117.9°T)	4°E	7.0	R	-	-	-	
080		TF	OLEGU	-	114° (118.0°T)	4°E	9.5	-	+4000	-	IAF	

CHANGE:

Serial number	Route	Path descriptor	Waypoint name	Flyover	Course °M (°T)	Magnetic variation	Distance (NM)	Turn direction	Altitude (ft)	Speed (kt)	Remarks	NAV SPEC
010	AIOSA 2Y	IF	AIOSA	-	-	4°E	-	-	-	-	-	RNAV 1
020		TF	DU714	-	039° (043.5°T)	4°E	35.3	-	-	-250	-	
030		TF	DU713	-	114° (117.9°T)	4°E	9.5	-	-FL160	-230	-	
040		TF	DU712	-	024° (028.0°T)	4°E	7.0	L	-	-	-	
050		TF	DU711	-	294° (298.1°T)	4°E	9.5	L	-	-	-	
060		TF	DU710	-	294° (298.0°T)	4°E	7.0	-	-	-	-	
070		TF	DU709	-	024° (027.9°T)	4°E	7.0	R	-	-	-	
080		TF	DU701	-	114° (117.9°T)	4°E	7.0	R	-	-	-	
090		TF	OLEGU	-	114° (118.0°T)	4°E	9.5	-	+4000	-	IAF	
010	ORAKA 2Y	IF	ORAKA	-	-	4°E	-	-	+5000	-	-	RNAV 1
020		TF	DU715	-	107° (110.8°T)	4°E	21.6	-	-	-	-	
030		TF	DU714	-	114° (117.8°T)	4°E	7.0	-	-	-	-	
040		TF	DU713	-	114° (117.9°T)	4°E	9.5	-	-FL160	-230	-	
050		TF	DU712	-	024° (028.0°T)	4°E	7.0	L	-	-	-	
060		TF	DU711	-	294° (298.1°T)	4°E	9.5	L	-	-	-	
070		TF	DU710	-	294° (298.0°T)	4°E	7.0	-	-	-	-	
080		TF	DU709	-	024° (027.9°T)	4°E	7.0	R	-	-	-	
090		TF	DU701	-	114° (117.9°T)	4°E	7.0	R	-	-	-	
100		TF	OLEGU	-	114° (118.0°T)	4°E	9.5	-	+4000	-	IAF	

CHANGE:

DUBROVNIK / Ruđer Bošković (LDDU)

SIPAL 2Y	SIPAL 1L	NETKO 1Y	NETKO 1L
RNAV RWY 29	MOKUN 2Y	BEVIS 2Y	AIOSA 2Y ORAKA 2Y

RNAV HOLDING tabular description

Waypoint name	Path descriptor	Inbound course °M (°T)	Leg time/ Distance (NM)	Turn direction	Minimum altitude (ft)	Maximum altitude (ft)	Speed limit MAX IAS (kt)	Magnetic variation	Remarks	NAV SPEC
OLEGU	HM	114° (118.0°T)	1 MIN / -	R	4000	-	230	4°E	-	RNAV 1
DU718	HM	141° (144.9°T)	1 MIN / -	R	4000	-	250	4°E	-	RNAV 1
ORAKA	HM	089° (093.2°T)	1 MIN / -	R	5000	-	250	4°E	-	RNAV 1
DU713	HM	024° (028.0°T)	1 MIN / -	R	4000	-	250	4°E	-	RNAV 1

Waypoint coordinates

Waypoint name	WGS-84 latitude	WGS-84 longitude
AIOSA	415542N	0171454E
BEVIS	415558N	0181140E
MOKUN	422701N	0182848E
NERRA	425418.5N	0173236.3E
NETKO	430230N	0173942E
OLEGU	422906.1N	0180754.0E
ORAKA	423213N	0171202E
SIPAL	430812N	0170425E
DU701	423335.4N	0175631.1E
DU709	423652.4N	0174808.8E
DU710	423041.0N	0174343.0E
DU711	422724.4N	0175204.7E
DU712	422255.4N	0180326.8E
DU713	421644.6N	0175900.4E
DU714	422113.1N	0174739.1E
DU715	422429.4N	0173918.0E
DU716	423258.7N	0171726.8E
DU717	425122.8N	0171040.0E
DU718	424523.4N	0172614.5E
DU719	421937.4N	0181146.4E
DU720	422319.4N	0182016.7E
DU721	425448.0N	0171716.6E

CHANGE: