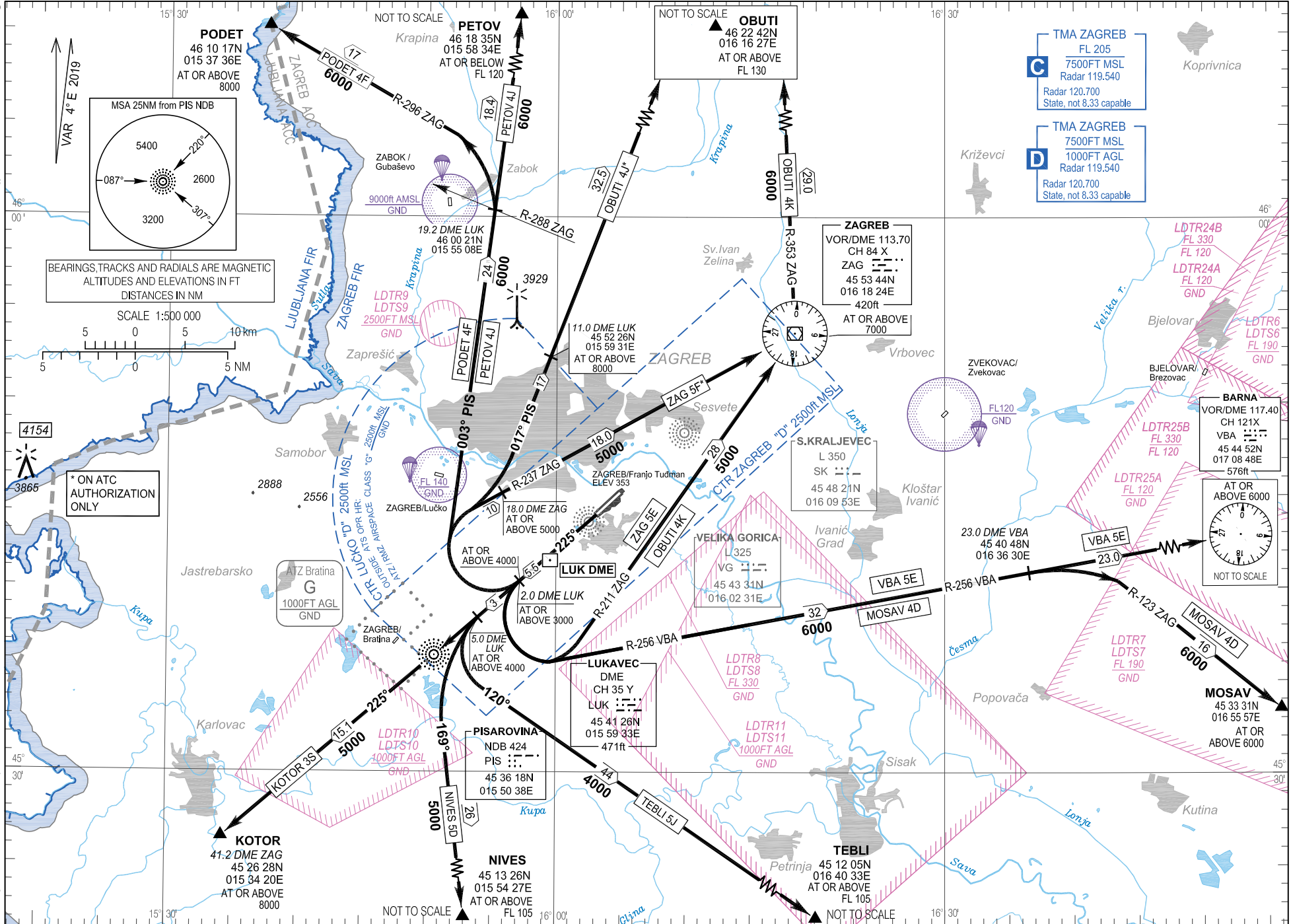


CHANGE: Zagreb TMA lateral and vertical limit and classification; Zagreb Radar frequency; New LDTR24A, LDTR24B, LDTR25A and LDTR25B areas established; LDTR1, LDTS1, LDTR2 and LDTS2 areas withdrawn.

© Hrvatska kontrola zračne plovidbe d.o.o.
Croatia Control Ltd.



STANDARD DEPARTURE CHART
INSTRUMENT (SID) - ICAO

TRANSITION ALTITUDE
10 000

ZAGREB ATIS 124.575
ZAGREB TOWER 118.300
ZAGREB RADAR 119.540
ZAGREB RADAR 120.700 State, not 8.33 capable

ZAGREB / Franjo Tuđman
CROATIA
RWY 22

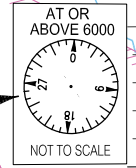
AIP HRVATSKA
AIP CROATIA

LDZA AD 2.24.8 SID RWY 22 - 1
18 APR 2024

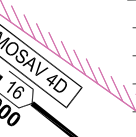
C TMA ZAGREB
FL 205
7500FT MSL
Radar 119.540
State, not 8.33 capable

D TMA ZAGREB
7500FT MSL
1000FT AGL
Radar 119.540
State, not 8.33 capable

BARNA
VOR/DME 117.40
CH 121X
VBA
45 44 52N
017 08 48E
576ft
AT OR ABOVE 6000



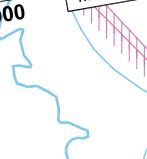
MOSAV
45 33 31N
016 55 57E
AT OR ABOVE 6000



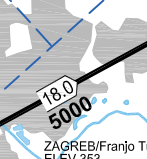
ZAGREB
VOR/DME 113.70
CH 84 X
ZAG
45 53 44N
016 18 24E
420ft
AT OR ABOVE 7000



VBA 5E
23.0 DME VBA
45 40 48N
016 36 30E



11.0 DME LUK
45 52 26N
015 59 31E
AT OR ABOVE 8000



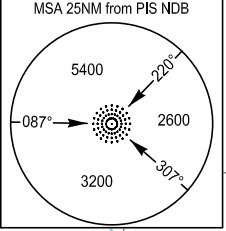
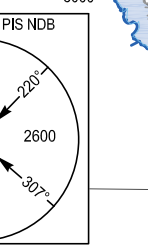
LUKAVEC
DME
CH 35 Y
LUK
45 41 26N
015 59 33E
471ft



PISAROVINA
NDB 424
PIS
45 36 18N
015 50 38E

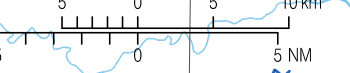


PODET
46 10 17N
015 37 36E
AT OR ABOVE 8000



BEARINGS, TRACKS AND RADIALS ARE MAGNETIC
ALTITUDES AND ELEVATIONS IN FT
DISTANCES IN NM

SCALE 1:500 000



* ON ATC
AUTHORIZATION
ONLY

4154

3865

AIRAC AIP AMDT 003/2024

OVA STRANICA JE NAMJERNO OSTAVLJENA PRAZNA
THIS PAGE INTENTIONALLY LEFT BLANK